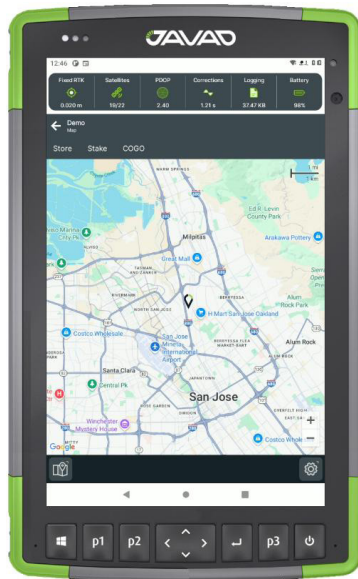




# JAVAD Data Collector

## Data Collection Software



### Key Features

- Dynamic Status Bar
- Simple Configuration
- Datum & Projections, Including EPSG
- Tilt Compensation
- Corrections
- COGO & Survey Routines
- Online Basemaps
- Import / Export

JAVAD Data Collector (JDC) is an Android data collection application designed for easy setup and operation. It is optimized for repeatable connection and configuration of JAVAD Smart Antennas with proven field efficiency. JDC incorporates COGO and Survey routines into the map screen for quick access and increased productivity. Automatically manage your point field data for easy import and export as well as raw data logging.

System Requirements	Android 10
	512 MB RAM
	128 MB Storage
	WiFi, Bluetooth Interface

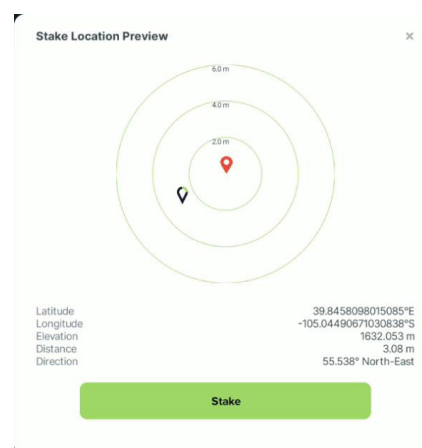
## Features & Benefits

Features at a Glance	Supports JAVAD Smart Antennas
	Online Background Maps
	COGO
	Coordinate Transformation
	Localization
Coordinate Systems	Worldwide EPSG Coordinate Systems
	US State Plane Coordinate Systems
Data Collection	Simple Interface
	Customizable Workflow
	GNSS Setup
	Radio & Cell Configurations
	Real-Time Graphical Display
	Store Point (Single or Average)
	Store Offset Point
	Auto Store
	Stake Point
	Stake Line
	Stake Line Offset
	Map Backgrounds
	Camera Integration

Fixed RTK 0.002 m	Satellites 19/22	PDOP 2.40	Corrections 1.21 s	Logging 37.47 B	Battery 98 %
----------------------	---------------------	--------------	-----------------------	--------------------	-----------------

### Dynamic Status Bar

Glanceable status for quick and easy operation.



### Stake Point Bullseye

Precise staking routines.