



UHF Base and Rover

Configuration Example

Version 1.1

Last Revised March 19, 2009

All contents in this manual are copyrighted by JAVAD GNSS.
All rights reserved. The information contained herein may not be used, accessed, copied, stored, displayed, sold, modified, published, or distributed, or otherwise reproduced without express written consent from JAVAD GNSS.

UHF BASE & ROVER CONFIGURATION EXAMPLE

Base Station Configuration

1. Start ModemVU.
2. Select *Triumph 1X Internal Radio* and click OK (Figure 2-1).

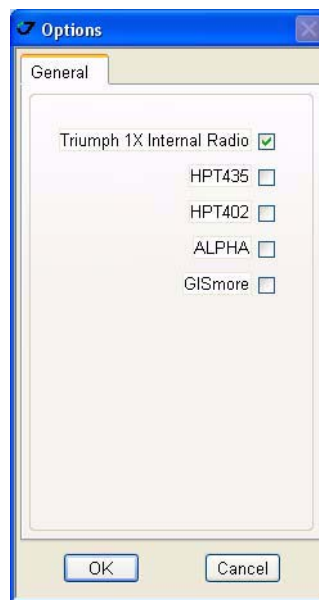


Figure 2-1. ModemVU. Options window

3. Select the port receiver is connected to and click *Connect* (Figure 2-2).



Figure 2-2. ModemVU. Connection

4. Select the *ON* mode for *Radio*, click *Apply*, and then click *Connect Radio* button (Figure 2-3).



Figure 2-3. ModemVU TRIUMPH Internal Radio selection

5. In the *Radio Link* tab set the following parameters, and click *Apply* (Figure 2-4):

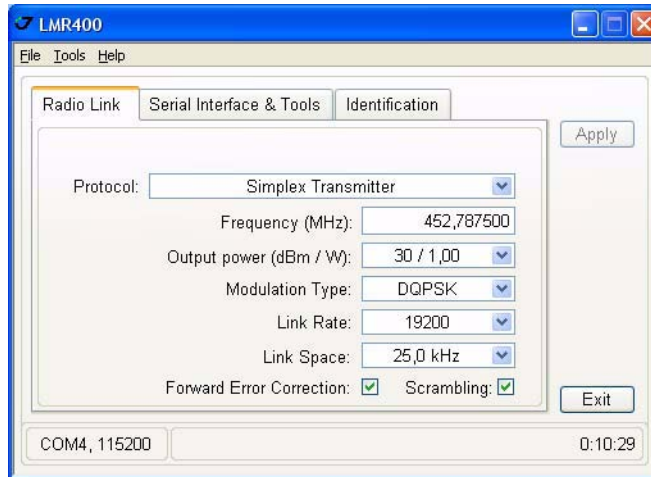


Figure 2-4. Radio Link tab settings

- Protocol: Simplex Transmitter
- Frequency (MHz): 406 to 470
- Output power (dBm/W): 30/1.00

- Modulation Type: DQPSK
 - Link Rate: 19200
 - Link Space: 25.0 kHz
 - Forward Error Corrections: ON
 - Scrambling: ON
6. Quit ModemVU by clicking *Exit* button.
 7. Start TriVU. Select port the receiver is connected to and click OK (Figure 2-5).

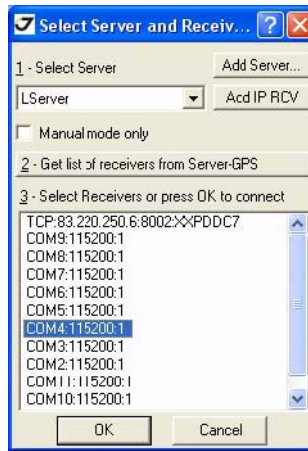


Figure 2-5. TriVU. Selecting port

8. Click *Configuration* ► *Receiver*.
9. In the *Base* tab click the *Get from receiver* button. Reference geodetic coordinates appear. Click *Apply* (Figure 2-6).

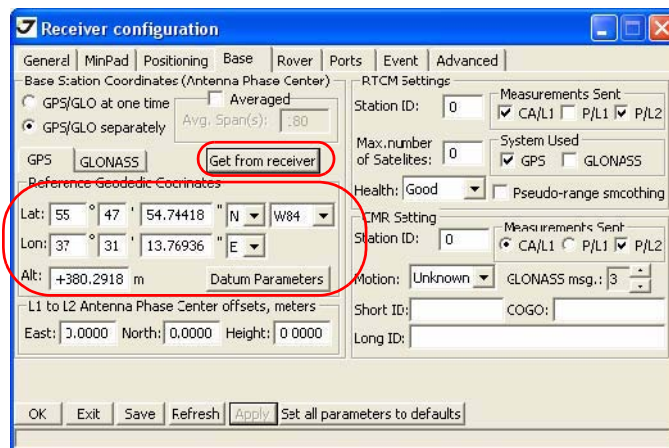


Figure 2-6. Base tab

10. In the *Ports* tab set the Port D *Output mode* to RTK CMR, and click *Apply*, then OK (Figure 2-7).

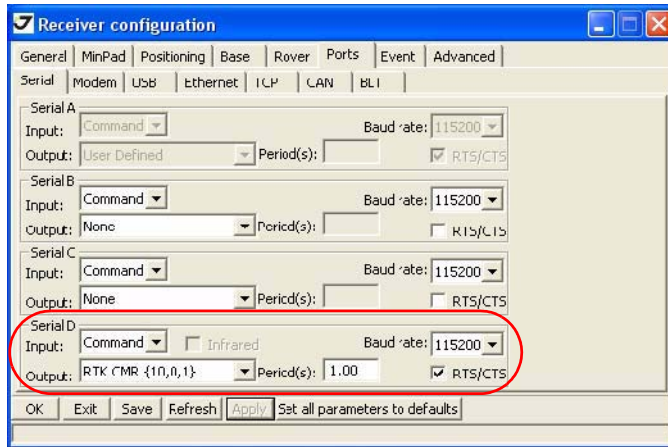


Figure 2-7. Rover tab

Rover Configuration

1. Start ModemVU.
2. Select *Triumph 1X Internal Radio* and click OK (Figure 2-8).

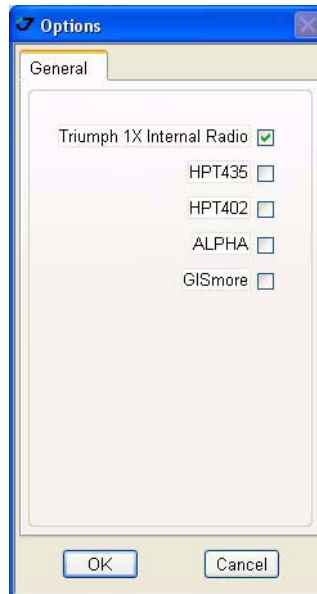


Figure 2-8. ModemVU. Options window

3. Select the port receiver is connected to and click *Connect* (Figure 2-9).



Figure 2-9. ModemVU. Connection

4. Select the *ON* mode for *Radio*, click *Apply* and click *Connect Radio* button (Figure 2-10).



Figure 2-10. ModemVU TRIUMPH Internal Radio selection

5. In the *Radio Link* tab set the following parameters, and click *Apply* (Figure 2-11):

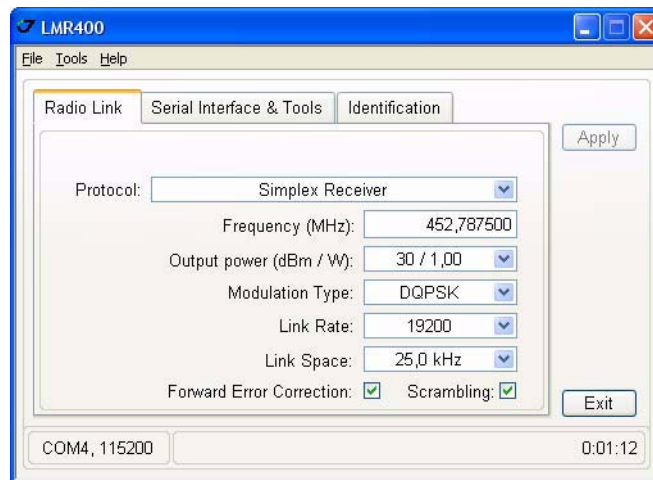


Figure 2-11. Radio Link tab settings

- Protocol: Simplex receiver
- Frequency (MHz): 406 to 470
- Output power (dBm/W): 30/1.00
- Modulation Type: DQPSK

- Link Rate: 19200
 - Link Space: 25.0 kHz
 - Forward Error Corrections: ON
 - Scrambling: ON
6. Quit ModemVU by clicking *Exit* button.
 7. Start TriVU. Select port the receiver is connected to and click OK (Figure 2-5).

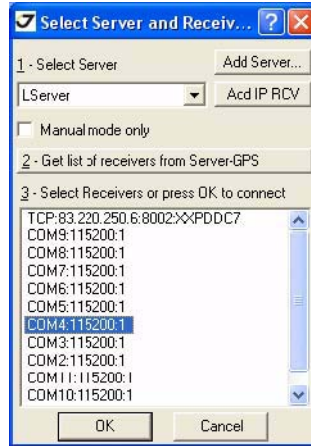


Figure 2-12. TriVU. Selecting port

8. Click *Configuration* ▶ *Receiver*.
9. In the *Positioning* tab set RTK fixed Mode, then click *Apply* (Figure 2-13).

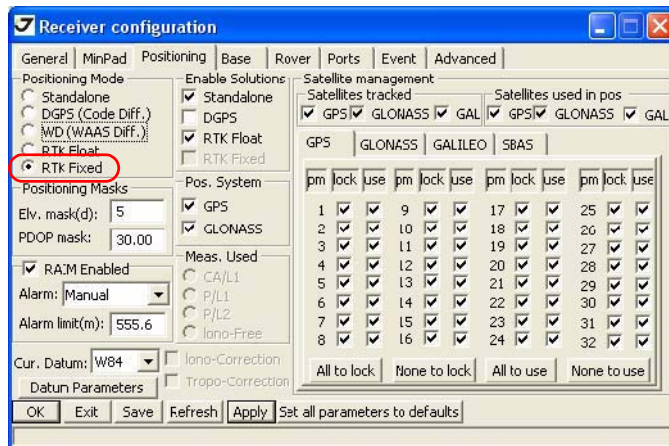


Figure 2-13. Positioning tab

10. In the *Rover* tab set RTK fixed mode (Figure 2-14), then click *Apply*:

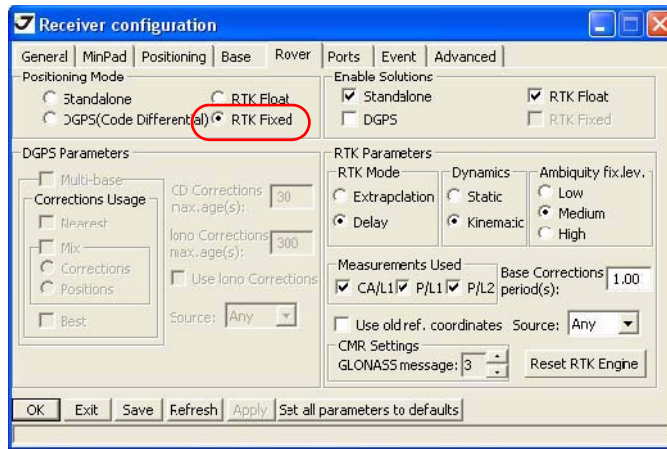


Figure 2-14. Rover tab

11. In the *Ports* tab set the *Input* mode for port D to CMR, then click *Apply* and OK (Figure 2-15).

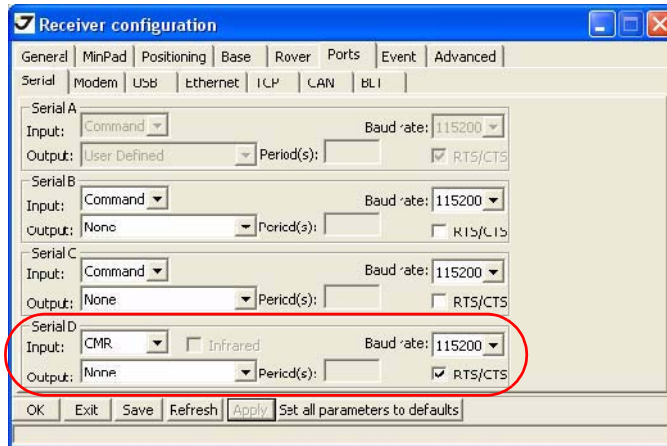


Figure 2-15. Ports tab

12. The receiver will obtain the RTK Fixed solution (Figure 2-16).

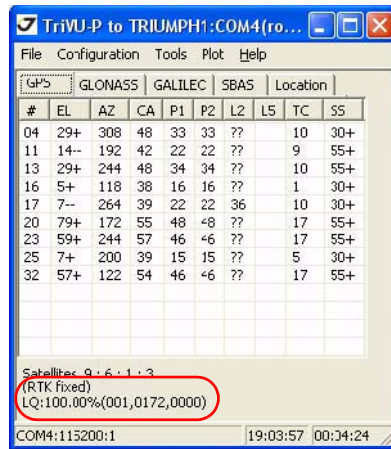


Figure 2-16. TriVU. RTK fixed



1731 Technology Drive, San Jose, CA 95110 USA

Phone: +1(408)573-8100

Fax: +1(408)573-9100

www.javad.com

Copyright © JAVAD GNSS, Inc., 2009
All rights reserved. No unauthorized duplication.