



RCV-RAW Client

Configuration Example

Version 1.1

Last Revised March 19, 2009

**All contents in this manual are copyrighted by JAVAD GNSS.
All rights reserved. The information contained herein may not be used, accessed, copied,
stored, displayed, sold, modified, published, or distributed, or otherwise reproduced without express
written consent from JAVAD GNSS.**

RCV-RAW CLIENT CONFIGURATION EXAMPLE

RCV-RAW client mode is used for establishing connection with the continuously operating GPS reference stations' networks, which transmit RTCM corrections via RAW TCP sockets.

1. Start ModemVU.
2. Select *Triumph 1X Internal Radio* and click OK (Figure 1-1).

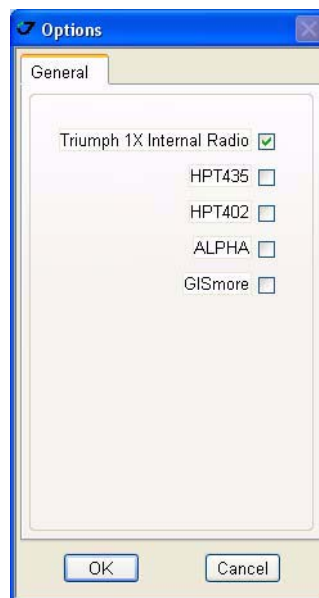


Figure 1-1. ModemVU. Options window

3. Select the port receiver is connected to and click *Connect* (Figure 1-2).



Figure 1-2. ModemVU. Connection

4. Select the *OFF* mode for GSM, click *Apply*, and then click *Connect GSM* button (Figure 1-3).



Figure 1-3. ModemVU TRIUMPH Internal Radio selection

5. In the *GPRS* tab in the *Main* subtab set up GPRS parameters, and click *Apply*:
 - Dial number
 - User name
 - Password
 - Access Point Name
 - PDP context identifier

Note: This information as usually is given by cell provider (Figure 1-4).



Figure 1-4. GPRS example settings for BEELINE

6. In the *Service* tab in the *Main* subtab set the mode to *OFF*. Click *Apply* (Figure 1-5).



Figure 1-5. Service tab. Main subtab

7. In the *RCV* subtab set the RCV client parameters:

- IP Address
- Port

Note: As usually this information is given by reference stations' network.

Set the RAW to ON, then click *Apply* (Figure 1-6)

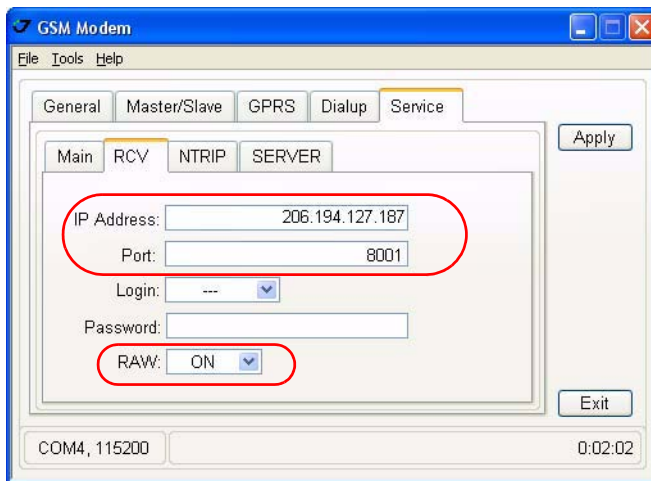


Figure 1-6. Settings for RCV client for connect to The Orange Country Real Time Network (OCRTN)

- 8. In the *General* tab insert your SIM card PIN code (if needed), then set the mode to *GPRS*, and click *Apply* (Figure 1-7).

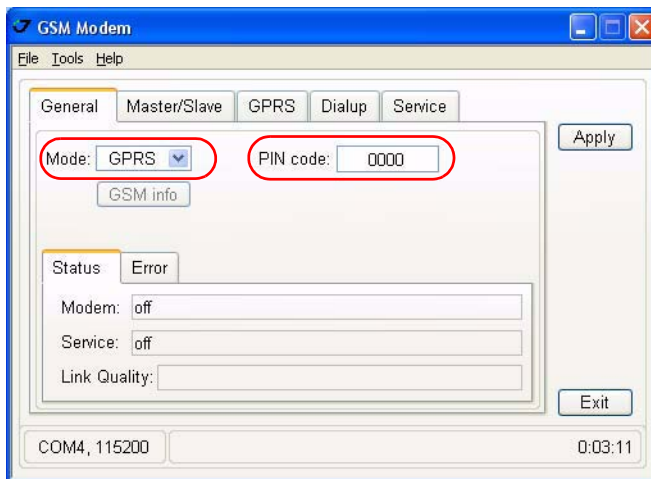


Figure 1-7. General tab

9. Wait until GPRS status will be “connected” (Figure 1-8).

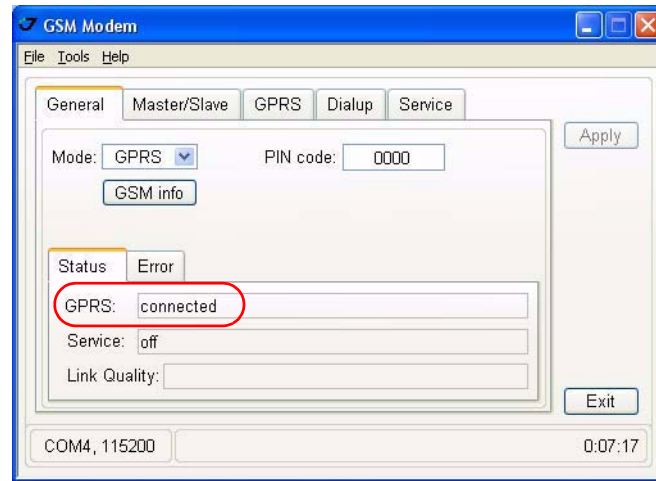


Figure 1-8. General tab: Status “connected”

10. In the *Main* subtab in the *Input Mode TCPCL port* drop-down list box select the network correction type (Figure 1-9), then click *Apply*.

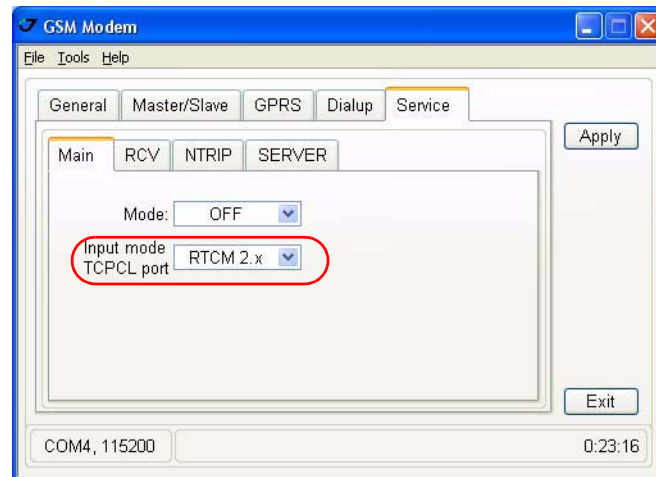


Figure 1-9. Main subtab. Input mode TCPCL port for receiving corrections from The Orange Country Real Time Network (OCRTN)

11. Set the RCV mode in the *Main* window, then click *Apply* (Figure 1-10).

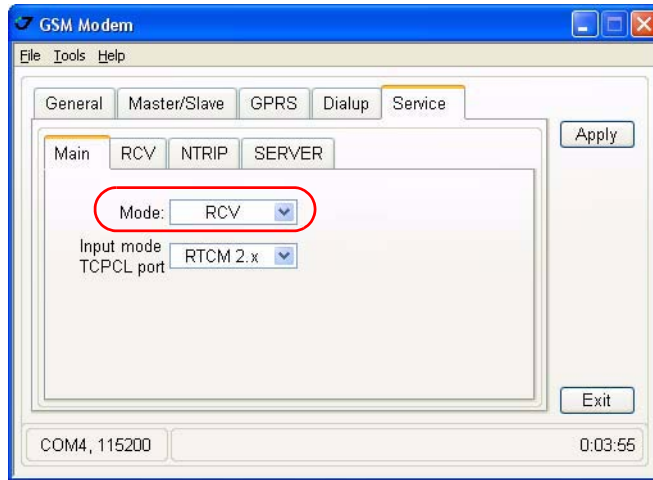


Figure 1-10. Main subtab. Mode

12. When connection with RCV caster is established receiver starts receive corrections (Figure 1-11).

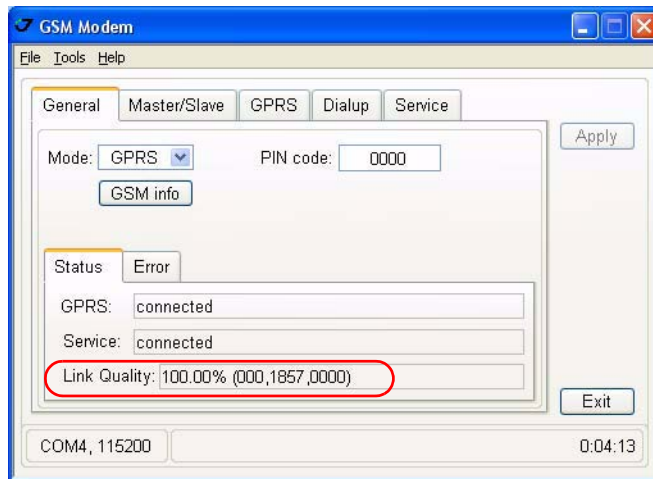


Figure 1-11. Connection established

13. Quit ModemVU by clicking *Exit* button.

14. Start TriVU. Select port the receiver is connected to and click OK (Figure 1-12).

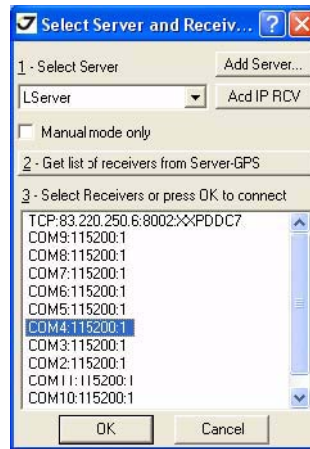


Figure 1-12. TriVU. Selecting COM port

15. Click *Configuration* ▶ *Receiver*.

16. In the *Positioning* tab set the *Positioning Mode* to RTK Fixed, and click *Apply* (Figure 1-13).

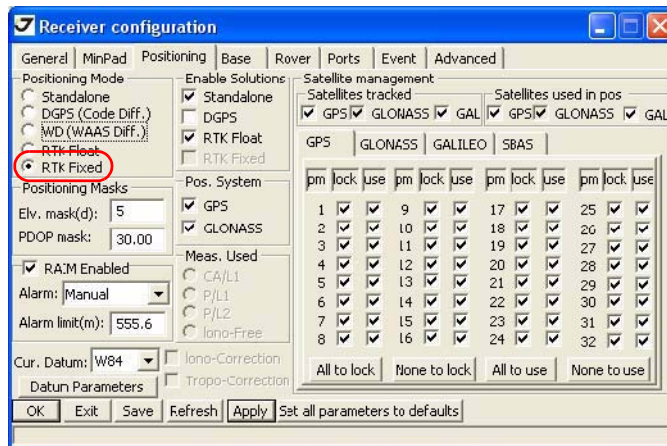


Figure 1-13. Positioning tab

17. In the *Rover* tab set the *Positioning mode* to RTK Fixed and *RTK mode* to Extrapolation, and click OK (Figure 1-14).

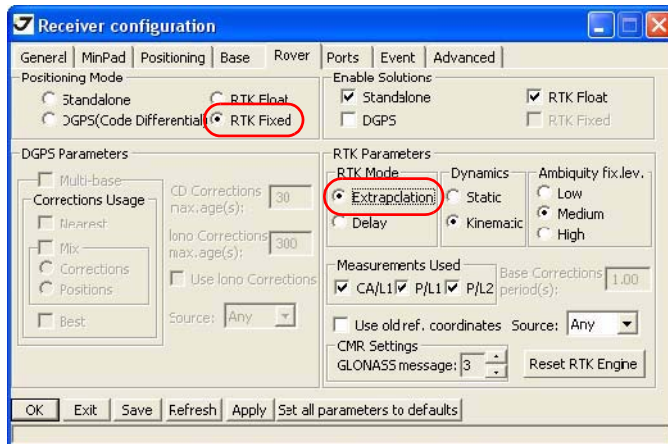


Figure 1-14. Rover tab

18. The receiver will obtain the RTK Fixed solution (Figure 1-15).

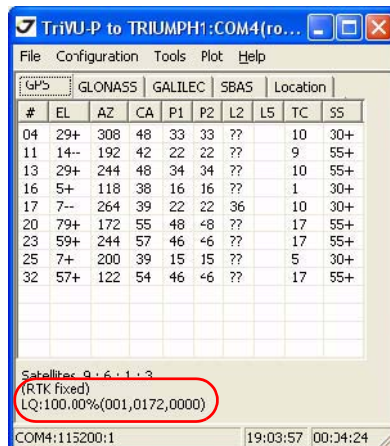


Figure 1-15. TriVU. RTK fixed



1731 Technology Drive, San Jose, CA 95110 USA

Phone: +1(408)573-8100

Fax: +1(408)573-9100

www.javad.com

Copyright © JAVAD GNSS, Inc., 2009
All rights reserved. No unauthorized duplication.