



900 Rock Avenue, San Jose, CA 95131, USA

HPT435BT JL (JLink LTE) WiFi base configuration

How to

Version 1.1

Last revised March 22, 2020

All contents in this manual are copyrighted by JAVAD GNSS.
All rights reserved. The information contained herein may not be used, accessed, copied, stored,
displayed, sold, modified, published, or distributed, or otherwise reproduced without express
written consent from JAVAD GNSS.

HPT435BT JL (JLink LTE) WiFi base configuration

1. Get MAC address of the WiFi adapter of TRIUMPH-LS: Home screen->WiFi->Configuration tab.

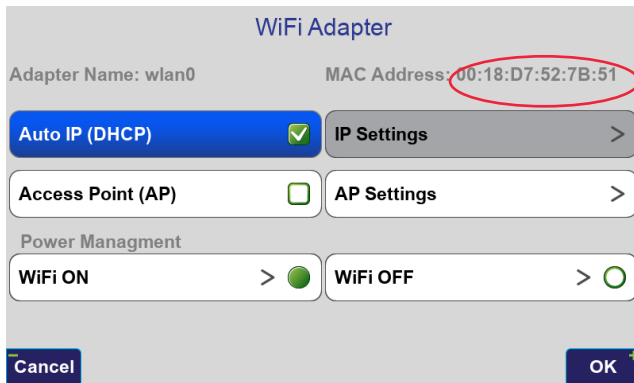


Figure 1. TRIUMPH-LS WiFi adapter's configuration screen

2. Go to the WiFi manager of your device (PC, tablet or mobile) and search for HPT435BT JL (or JLink LTE):

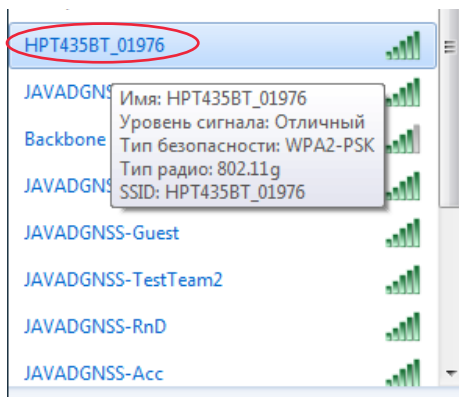


Figure 2. WiFi Manager

3. Connect with password "testtest".

4. Enter in browser 10.1.10.1:8080 to connect to the web interface, set the login "jlink" and the password "jlink".

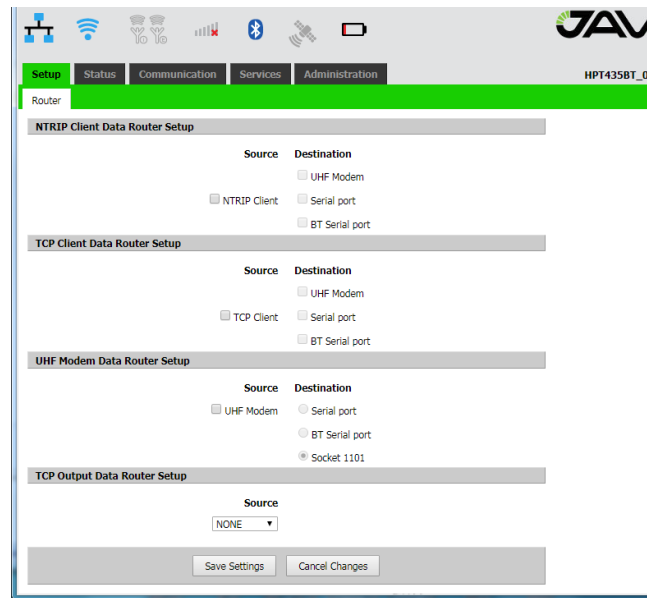


Figure 3. HPT435BT JL (JLink LTE) web interface

5. In the web interface Setup->Communication->Wi-Fi map the MAC address of TRIUMPH-LS with IP 10.1.10.110

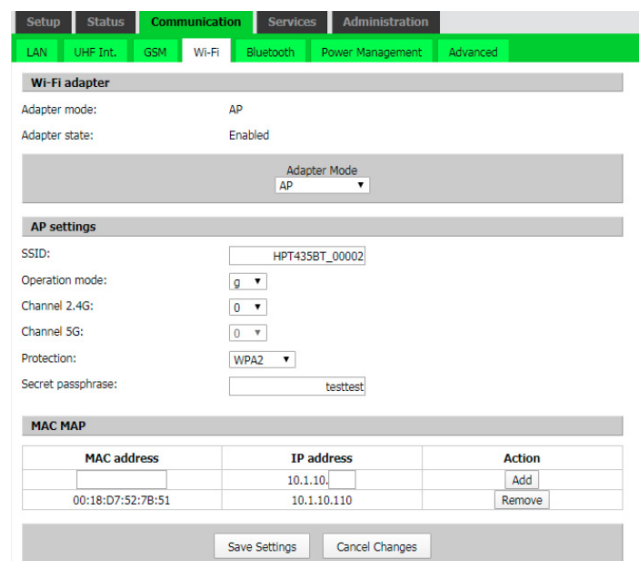


Figure 4. HPT435BT JL (JLink LTE) WiFi configuration tab

6. Connect TRIUMPH-LS to HPT435BT JL (JLink LTE) via WiFi: Home screen->WiFi->Network, select the name of access point f e.g. HPT-436BT_01976 and tap Connect.

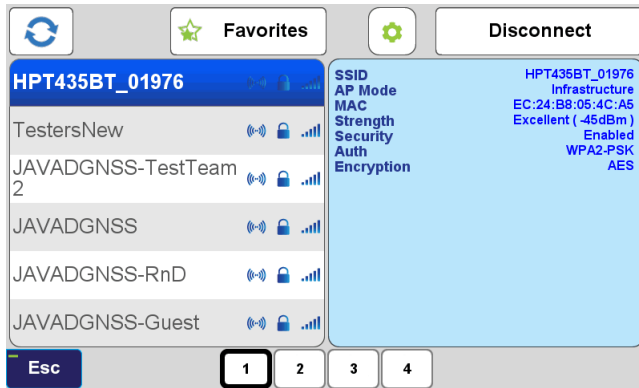


Figure 5. Connecting to the HPT435BT JL

7. Configure the TCP base mode of TRIUMPH-LS: Home screen->Setup->GeneralGroup Edit->RTK Base. Set up the coordinate system, base position, TCP Server.

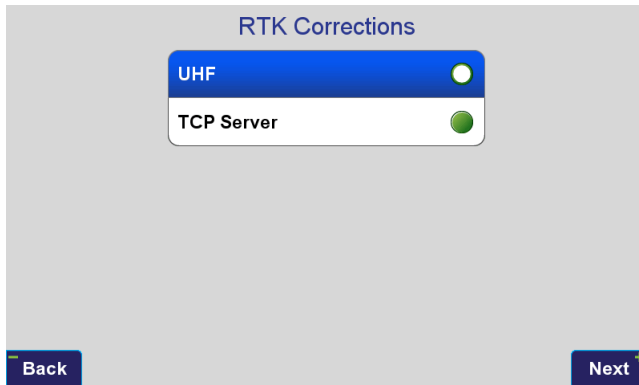


Figure 6. TRIUMPH-LS RTK corrections source selection

The settings of TCP Server are depicted on the picture below.

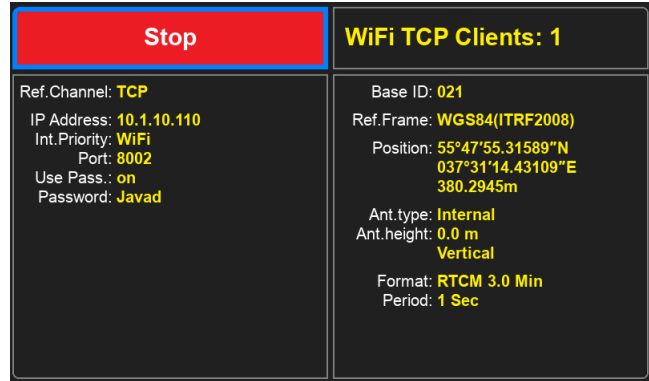


Figure 7. TRIUMPH-LS TCP Server's settings

8. Select the corrections type and period of TRIUMPH-LS. The TRIUMPH-LS (Base) is configured.

9. In the web interface Setup->Router select TCP client -> UHF modem, click Save settings and wait for confirmation.

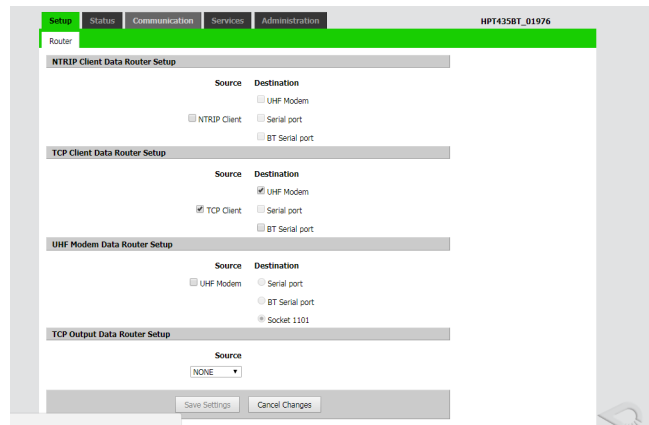
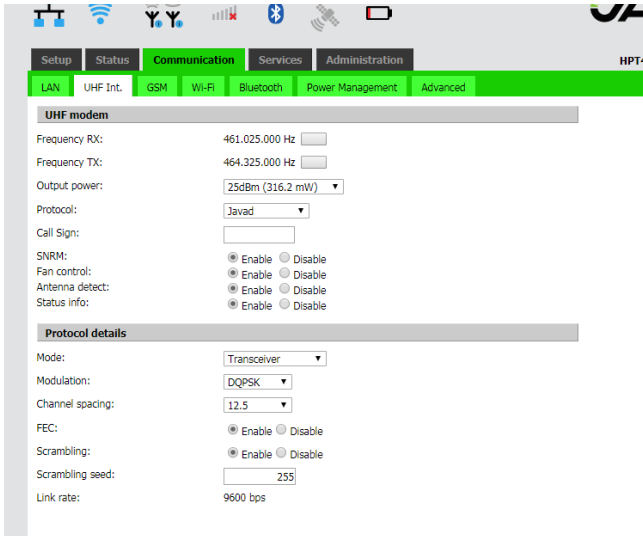


Figure 8. Settings for UHF modem

10. In the web interface Communication->UHF Int. setup the UHF settings, click Save settings and wait for confirmation.



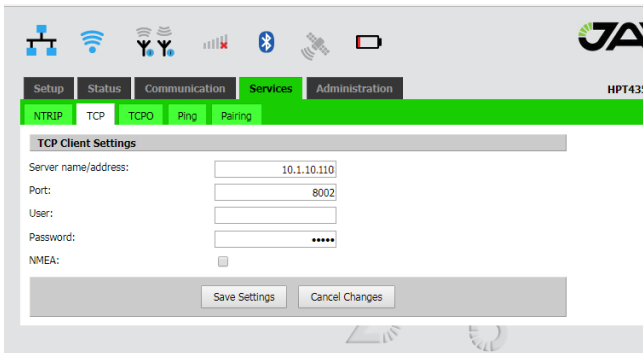
WiFi			
Access Point	HPT435BT_00002	TCP Server	STARTED
MAC Address	50:33:8b:56:02:85	IP Address	10.1.10.110
Auth. Mode	WPA-PSK	TCP Port	8002
Signal Quality	Good	Password	Javad
Wlan State	Ready	TCP Clients	1
IP Address	10.1.10.110		
Subnet Mask	255.255.255.0		
Default Gateway			
DNS1	8.8.8.8		
DNS2			

Navigation buttons: Esc, Networks >, RTN >, Configuration >

11. In the web interface Services->TCP set IP of Triumph-LS (Base) from TCP server:

- IP: 10.1.10.110,
- port:8002,
- login – empty,
- password: Javad.

Click Save settings and wait for the confirmation.



12. Note, you can check assigned IP address of TRIUMPH-LS and status of JLink TCP client by clicking on the WiFi icon (on the status bar).



900 Rock Avenue, San Jose,
CA 95131, USA

Phone: +1(408)770-1770
Fax : +1(408)770-1799

www.javad.com

All rights reserved © JAVAD GNSS, Inc., 2020