



900 Rock Avenue, San Jose, CA 95131, USA



* TRIUMPH-1, TRIUMPH-1M, and TRIUMPH-2

How to setup
**WI-FI IN TRIUMPH
RECEIVERS***

Version 1.0
Last revised September 14,
2018

All contents in this manual are copyrighted by JAVAD GNSS. All rights reserved. The information contained herein may not be used, accessed, copied, stored, displayed, sold, modified, published, or distributed, or otherwise reproduced without express written consent from JAVAD GNSS.

WI-FI CONECTION TO TRIUMPH* RECEIVER

Wi-Fi setup

A Wi-Fi connection to the JAVAD TRIUMPH receiver can be configured using the NetView&Modem software or directly via the GREIS commands.

For the full GREIS description see http://javad.com/downloads/javadgnss/manuals/GREIS/GREIS_Reference_Guide.pdf.

Below is description of the Wi-Fi settings in JAVAD TRIUMPH receivers.

Start the NetView&Modem Software, con-

nect the receiver as described in the NetView&Modem Manual. Open the Networking tab, then WLAN tab (Figure 1).

- 1) Mode – the Wi-Fi working mode (on, off, adhoc).
- 2) IP – IP address of the receiver on the network (static / dynamic or distribution of addresses for adhoc).
- 3) Access Point – settings for connecting to your access point: by MAC address or point name, encryption mode (WPA / WEP), keys for WEP or password for WPA.

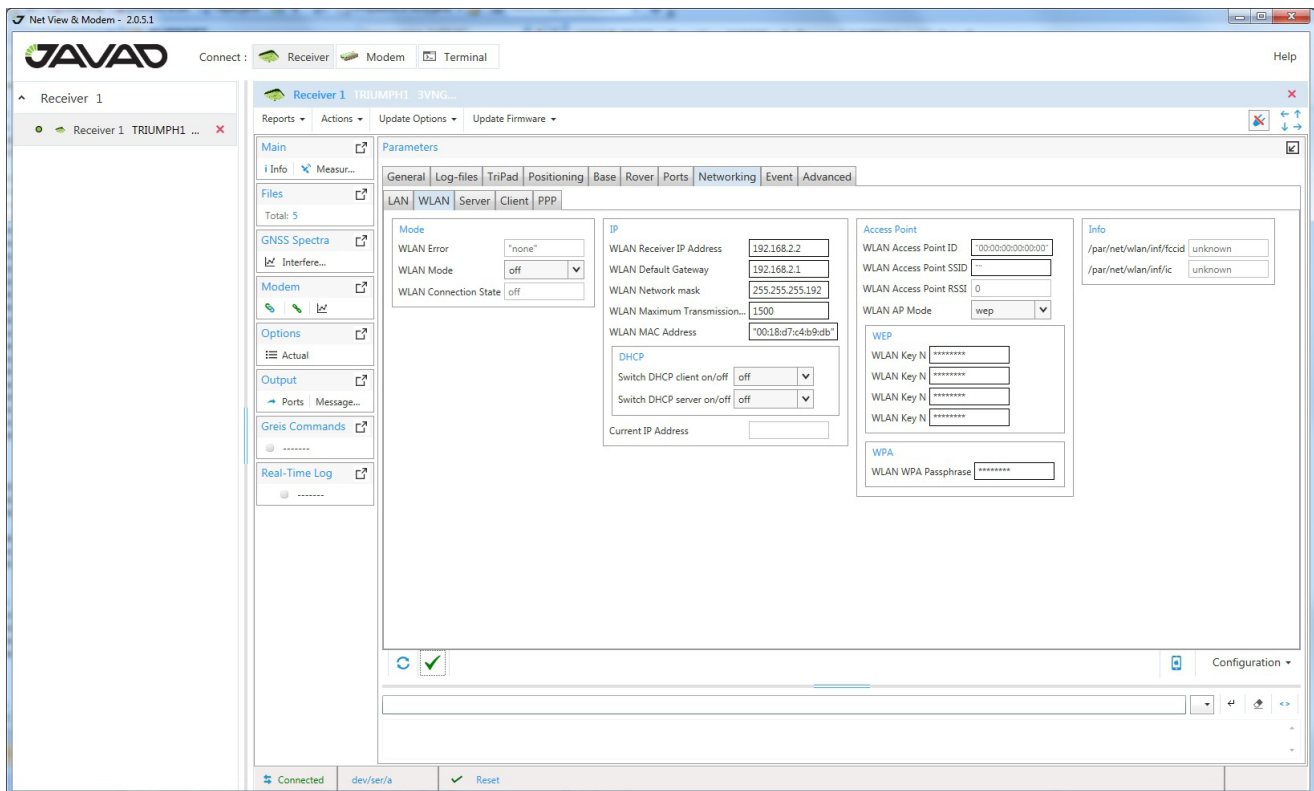


Figure 1. NetView Wi-Fi tab. Parameters -> Networking -> WLAN

* TRIUMPH-1, TRIUMPH-1M, and TRIUMPH-2

To successfully apply and save any changes to the Wi-Fi settings in the JAVAD TRIUMPH receiver, you have to restart the receiver, otherwise the changes will not take the effect.

To connect to the receiver using Wi-Fi it is necessary (via NetView&Modem) to perform the following steps:

- 1) Set the MAC address of your access point or its name (MAC in priority) for the receiver.
- 2) Set the static IP, IP mask and gateway or enable the DHCP-client or DHCP-server for adhoc.
- 3) Select the encryption mode WEP or WPA.
- 4) Set the keys (WEP) or passphrase (WPA).
- 5) Set the WLAN Mode to “on” or “adhoc” and click “Apply”.
- 6) Reboot the receiver.

To turn off the Wi-Fi, you need to:

- 1) Select the mode of operation (WLAN Mode) off and click Apply.
- 2) Reboot the receiver

The current state of Wi-Fi in TRIUMPH receivers can be determined by sending the command `%%print,/par/net/wlan/state:on`.

The Wi-Fi state error in JAVAD TRIUMPH receivers can be determined by sending the command:

```
%%print,/par/net/wlan/error:on.
```

Wi-Fi AdHoc setup

Wi-Fi connection to the TRIUMPH receiver can be configured directly using the GREIS commands. All information is contained in the block `/par/net/wlan` (you can see `%%print,/par/net/wlan:on`).

As a result, the AdHoc setup will act as a Wi-

Fi access point, to which you can connect with any compatible device.

To connect, you need:

- 1) In your TRIUMPH, set the SSID (name) of the future network AdHoc, IP, IP-mask, and gateway.

For example:

```
%%set,/par/net/wlan/ap/ssid,JavadAdHoc
```

- 2) You can enable the DHCP server. Any connected device will receive IP automatically:

```
%%set,/par/net/dhcp/server/mode,on
```

- 3) Turn on the AdHoc mode:

```
%%set,/par/net/wlan/mode,adhoc
```

- 4) Reboot the receiver:

```
%%set,reset,y
```

- 5) On your PC, find and select a network (access point) with the SSID name.

Please note that the MAC address of this network is available on request `%%print,/par/net/wlan/ap/id`

- 6) Connect to this Wi-Fi network. In the Wi-Fi connection settings on your PC, you need to install the appropriate IP, IP-mask, and gateway or enable the DHCP client (when the DHCP server is enabled).

Then you can connect any compatible software as well as with a normal Wi-Fi connection.

To turn off Wi-Fi, you need to:

- 1) Uncheck the “Turn Wi-Fi on” and click “Apply”.

```
%%set,/par/net/wlan/mode,off
```

- 2) Reboot the receiver:

```
%%set,reset,y
```



900 Rock Avenue, San Jose,
CA 95131, USA

Phone: +1(408)770-1770
Fax : +1(408)770-1799

www.javad.com
All rights reserved © JAVAD GNSS, Inc., 2018