



How to pair TRIUMPH-2 and JLink LTE using Netview&Modem

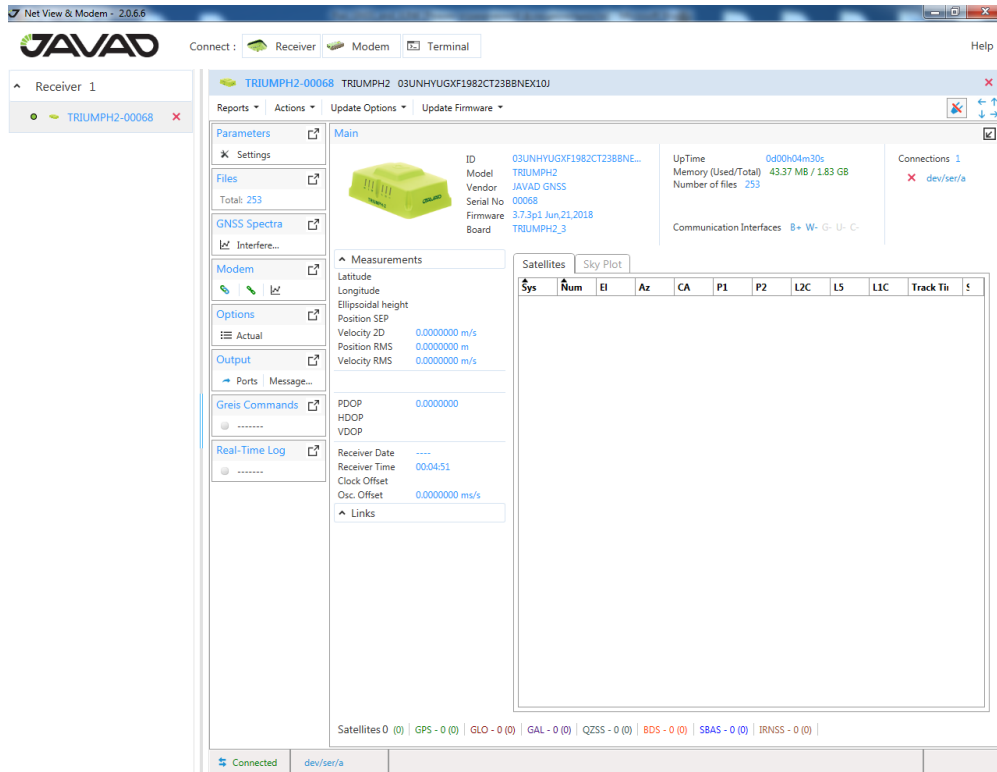
Version 1.0

Last Revised March 5, 2019

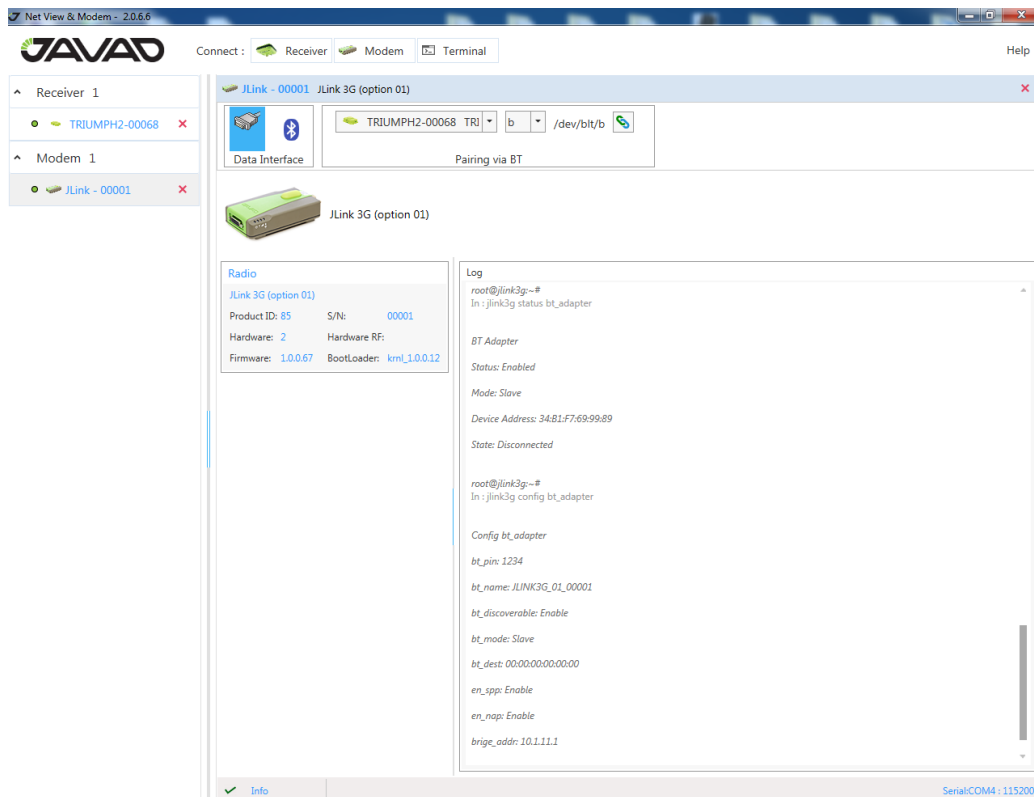
**All contents in this manual are copyrighted by JAVAD GNSS.
All rights reserved. The information contained herein may not be used, accessed, copied,
stored, displayed, sold, modified, published, or distributed, or otherwise reproduced without express
written consent from JAVAD GNSS.**

To start using TRIUMPH-2 and Jlink LTE, these devices should be paired and set up. Please see below the detailed description of the steps you need to perform.

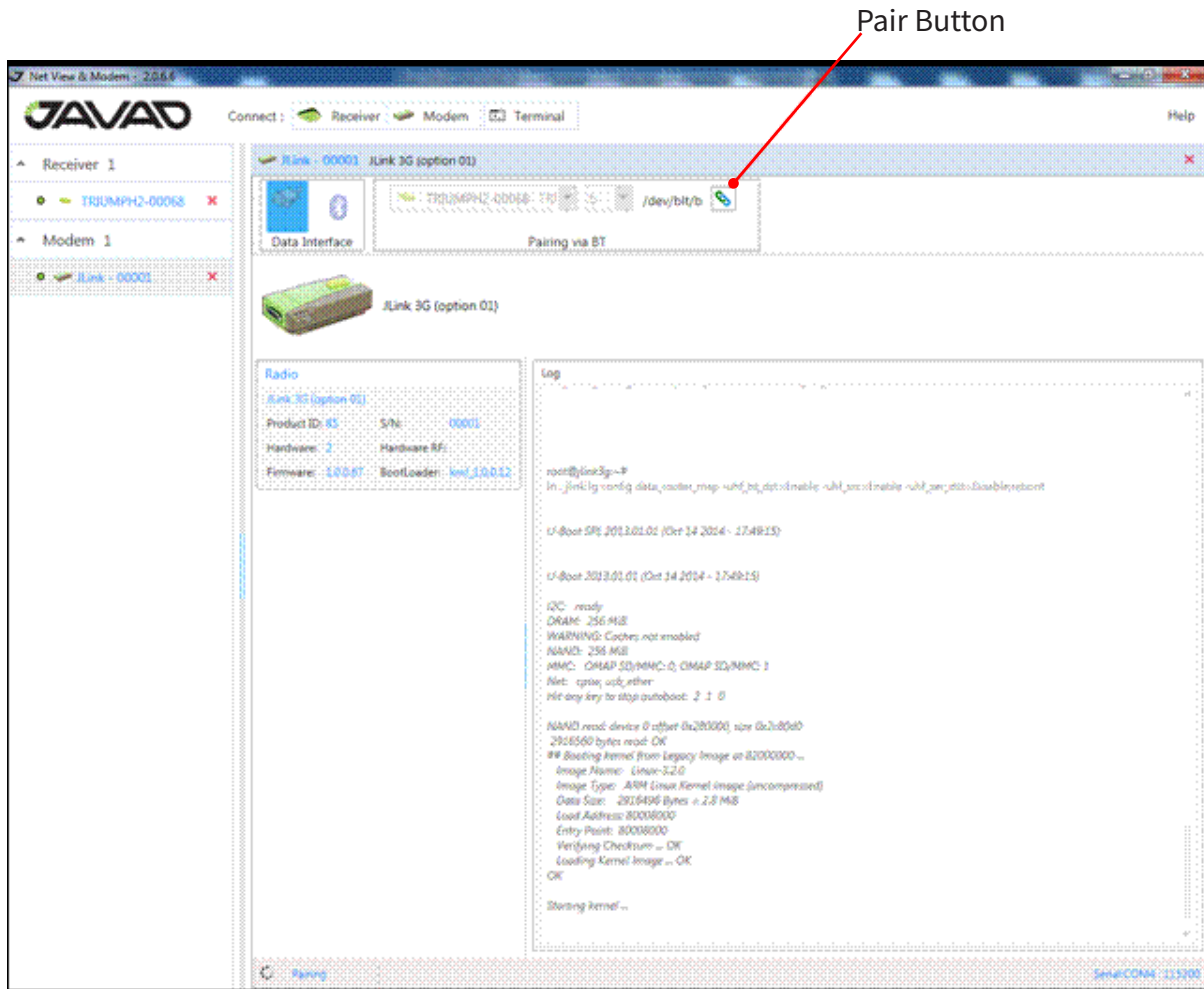
1. Connect TRIUMPH-2 and JLink LTE to the PC using USB, and start the “Net View & Modem” software, then connect to the receiver:



2. Select Modem tab on the top of the screen, then select corresponding port and connect to the JLink LTE:



3. Click “Pair” and wait until pairing procedure will be finished:



After TRIUMPH-2 and JLink LTE are paired successfully, use the JMobile software to setting them up and managing. Please see for the details the JMobile Use Manual:

http://www.javad.com/downloads/javadgnss/manuals/AndroidTools/Software_Guide_for_JMT_Android.pdf

1) How to connect to the JMobile see page 10;

2) How to setup the devices see pages 20-25.



900 Rock Avenue, San Jose,
CA 95131, USA

Phone: +1(408)770-1770

Fax : +1(408)770-1799

www.javad.com

All rights reserved © JAVAD GNSS, Inc., 2019