



How to pair TRIUMPH-1M/2 and JLink 3G/LTE using TRIUMPH-LS

Version 1.0

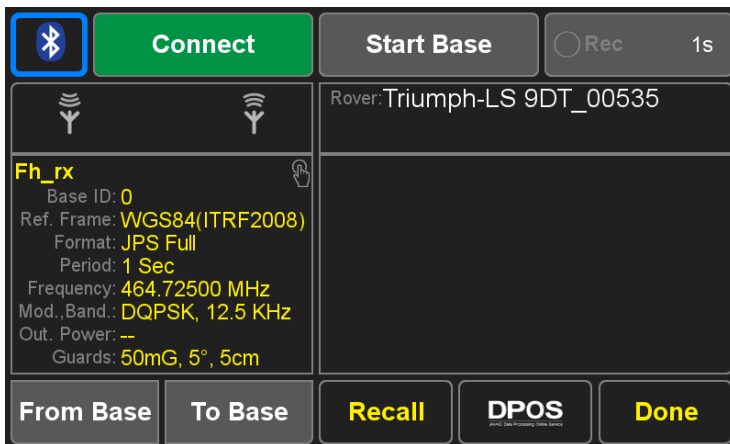
Last Revised March 2, 2019

**All contents in this manual are copyrighted by JAVAD GNSS.
All rights reserved. The information contained herein may not be used, accessed, copied,
stored, displayed, sold, modified, published, or distributed, or otherwise reproduced without express
written consent from JAVAD GNSS.**

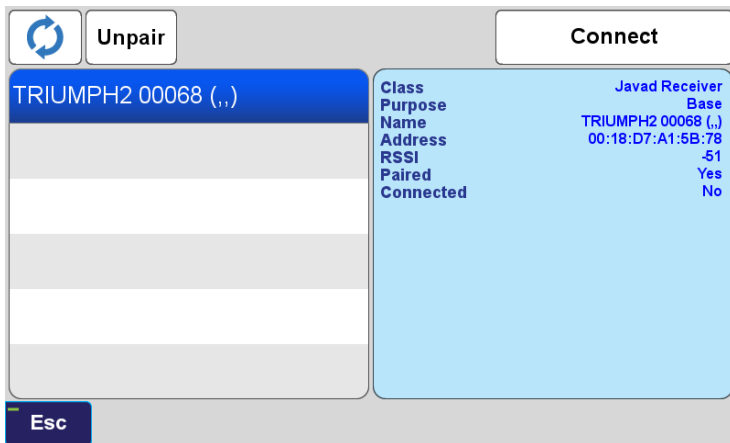
An example how to pair TRIUMPH-2, TRIUMPH-1/1M GNSS receivers and JLink 3G/LTE

Note: firmware, software and operating system should be updated to the latest release version for all devices.

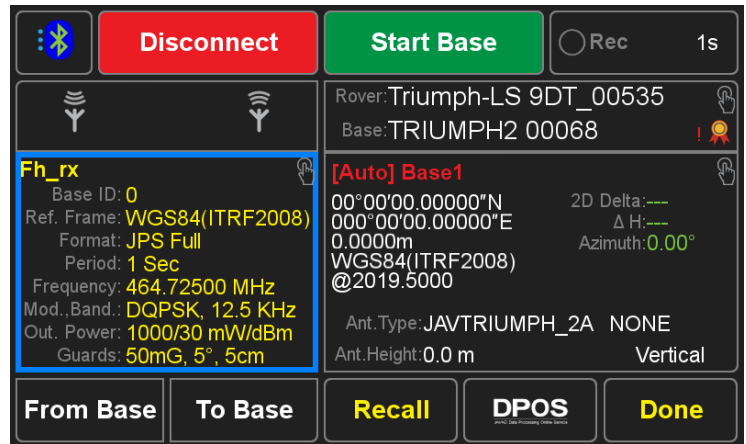
1. Power on TRIUMPH-LS, GNSS receiver and JLink 3G/LTE.
2. Go to the Base/Rover screen of TRIUMPH-LS and tap “Connect”:



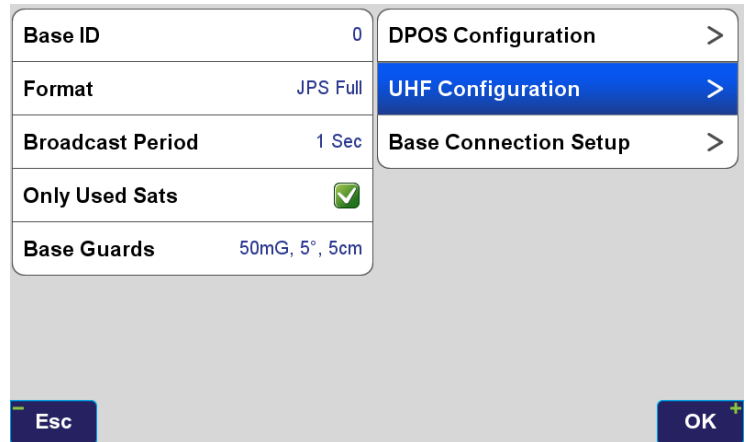
3. Wait until the GNSS receiver (TRIUMPH-2 in this particular case) will appear in the list, select it and tap “Connect”:



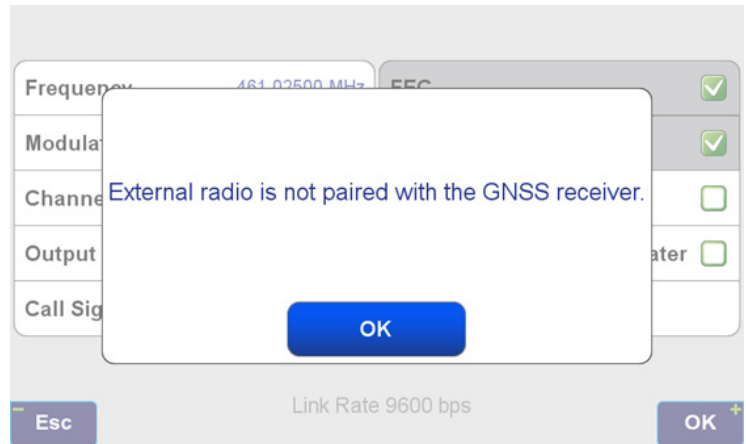
4. After connection succeeded, tap on the blue-framed rectangle under the UHF icons:



5. Select UHF Configuration:

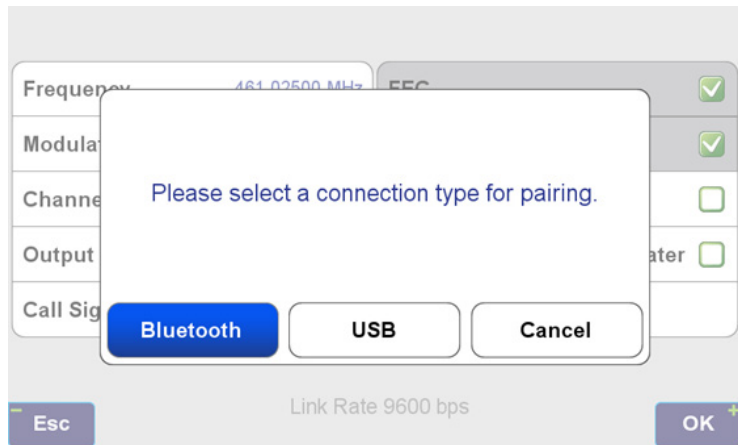


6. Tap OK to select the channel for pairing:



Note: if the GNSS receiver was paired with the external radio previously, which is not connected to the receiver, J-File will suggest to pair with another one.

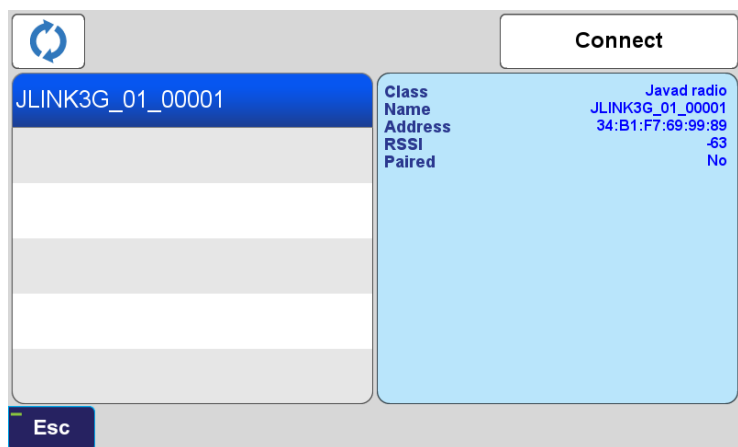
7. Select Bluetooth for JLink 3G:



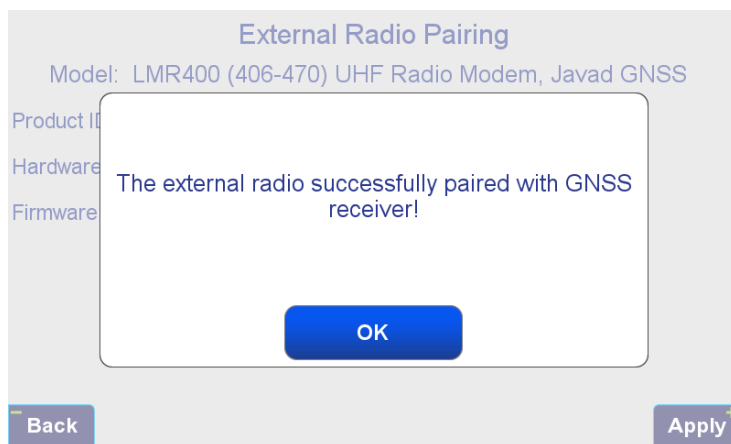
Note: for JLink LTE both channels (Bluetooth and USB) are available. In case if USB channel is selected, the radio should be connected with the TTRI-UMPH-LS using Access Data Cable, DB26/SAE/USB (1ft/0.3m) p/n 14-578162-01, depicted below:



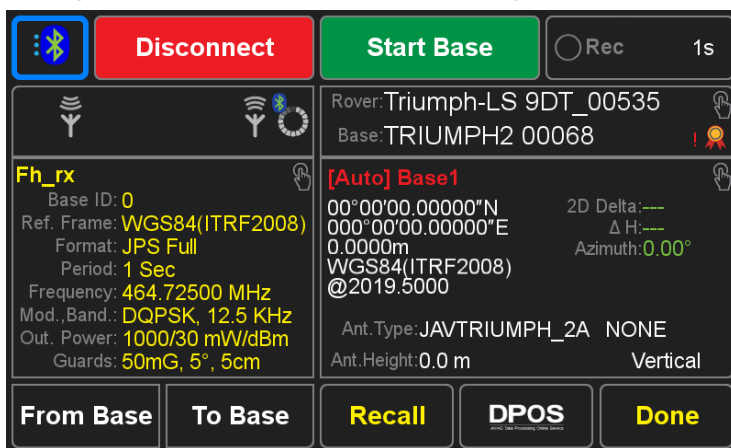
8. Wait until JLink 3G/LTE will appear in the list, select it and tap "Connect". J-Filed will start the pairing procedure which will lasts approximately 30-45 seconds:



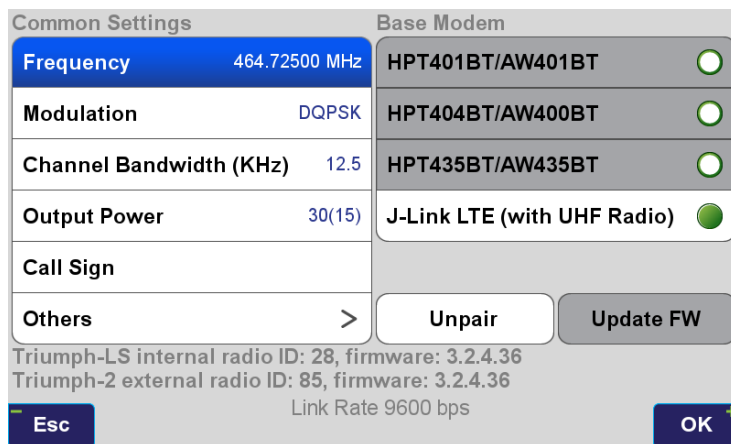
9. After pairing succeeded, tap OK.



10. In the Base/Rover screen wait about 1 minute until JLink will restart (wait until the small BT icon will change their color from white-blue to green-blue):



11. Open the UHF configuration screen (see steps 4 and 5). J-Field will start the identification process radio ID and firmware version will indicate that the external radio has been successfully identified):



At this point, the external GNSS receiver and JLink are ready to work as a Base station via UHF.



900 Rock Avenue, San Jose,
CA 95131, USA

Phone: +1(408)770-1770

Fax : +1(408)770-1799

www.javad.com

All rights reserved © JAVAD GNSS, Inc., 2019