



GSM Base and Rover

Configuration Example

for TRIUMPH-1, SIGMA, and GISmore Receivers

Version 1.1

Last Revised August 18, 2009

**All contents in this manual are copyrighted by JAVAD GNSS.
All rights reserved. The information contained herein may not be used, accessed, copied,
stored, displayed, sold, modified, published, or distributed, or otherwise reproduced without express
written consent from JAVAD GNSS.**

GSM BASE & ROVER CONFIGURATION EXAMPLE

Base Station Configuration

1. Start ModemVU.
2. Select *TRIUMPH-1X Internal Radio*¹ and click OK (Figure 2-1).

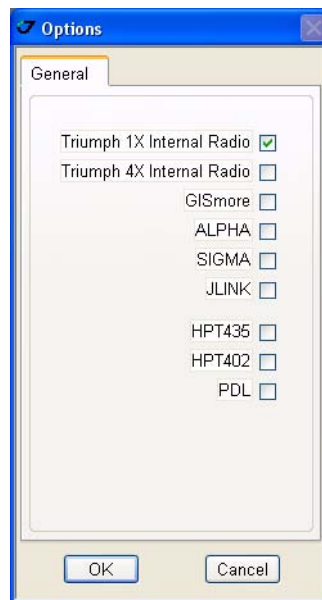


Figure 2-1. ModemVU. Options window

1. For SIGMA receiver select SIGMA; for GISmore select GISmore

3. Select the port receiver is connected to and click *Connect* (Figure 2-2).



Figure 2-2. ModemVU. Connection

4. Set the *Radio* and *GSM* parameters to *OFF* and click *Apply*.
5. Click *Connect GSM* button (Figure 2-3).



Figure 2-3. ModemVU ALPHA Internal Radio selection

6. In the *Master/Slave* tab set the following parameters, and click *Apply* (Figure 2-4):

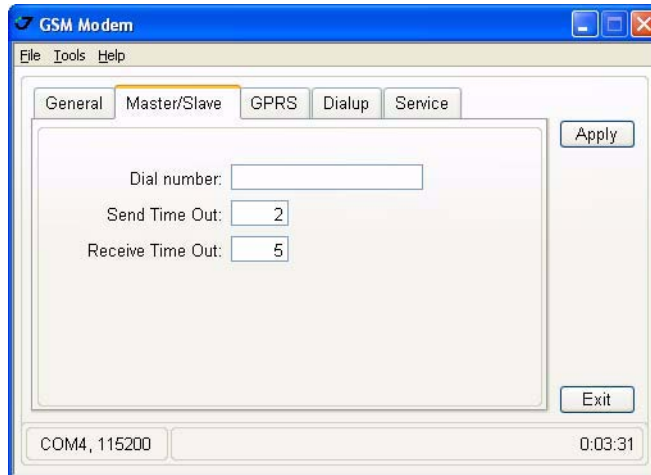


Figure 2-4. Master/Slave tab settings

- Dial number: empty
- Send Time Out: 2
- Receive Time Out: 5

7. In the *General* tab insert your SIM card PIN code (if needed), then set the mode to *Slave*, and click *Apply*.

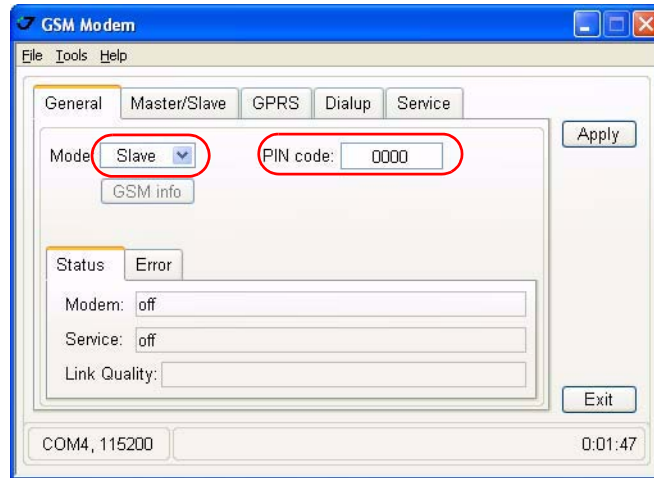


Figure 2-5. General tab settings

8. Wait until the modem will establish connection with net. The *Modem* status will be ready (at first detecting, registration, than ready).



Figure 2-6. Modem status “ready”

9. Quit ModemVU by clicking *Exit* button.

10. Start TriVU. Select port the receiver is connected to and click OK (Figure 2-7).

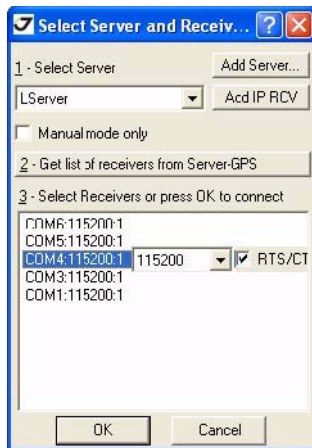


Figure 2-7. TriVU. Selecting port

11. Click *Configuration* ▶ *Receiver*.

12. In the *Base* tab click the *Get from receiver* button. Reference geodetic coordinates appear. Click *Apply* (Figure 2-8).

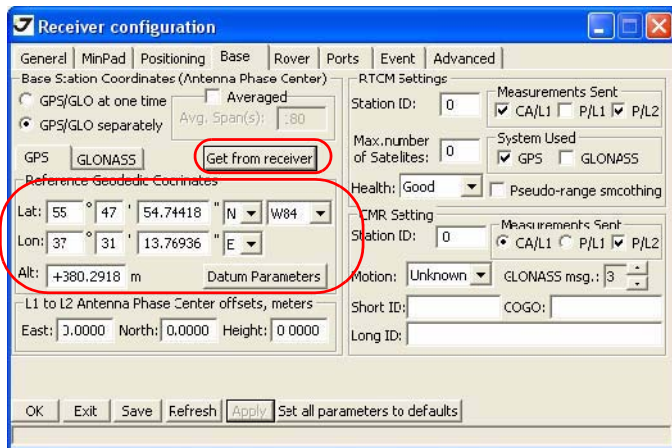


Figure 2-8. Base tab

13. In the *Ports* tab *Serial* subtab set the Port B *Output mode* to RTK CMR, and click *Apply*, then OK (Figure 2-9).

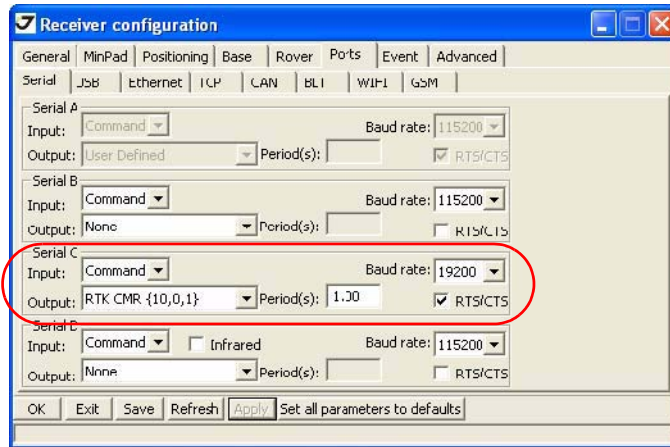


Figure 2-9. Rover tab

14. Quit TriVU.

Rover Configuration

1. Start ModemVU.
2. Select *Triumph 1X Internal Radio*¹ and click OK (Figure 2-10).

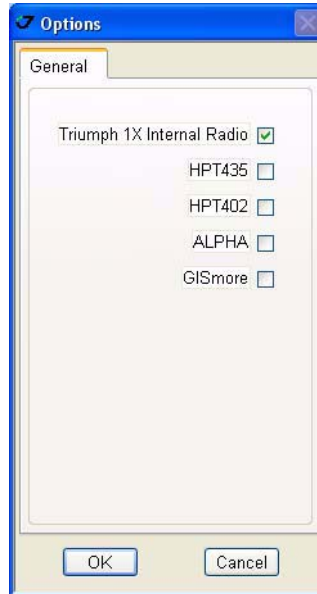


Figure 2-10. ModemVU. Options window

3. Select the port receiver is connected to and click *Connect* (Figure 2-11).



Figure 2-11. ModemVU. Connection

4. Set the *Radio* and *GSM* parameters to *OFF* and click *Apply*.

1. For SIGMA receiver select SIGMA; for GISmore select GISmore

5. Click *Connect GSM* button (Figure 2-12).



Figure 2-12. ModemVU TRIUMPH Internal Radio selection

6. In the *Master/Slave* tab set the following parameters, and click *Apply* (Figure 2-4):

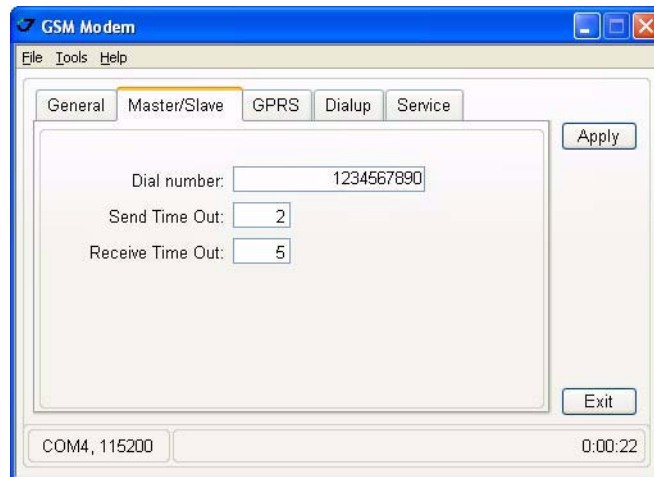


Figure 2-13. Master/Slave tab settings

- Dial number: phone number of the Base station's SIM card.
- Send Time Out: 2
- Receive Time Out: 5

7. In the *General* tab insert your SIM card PIN code (if needed), then set the mode to *Master*, and click *Apply*;

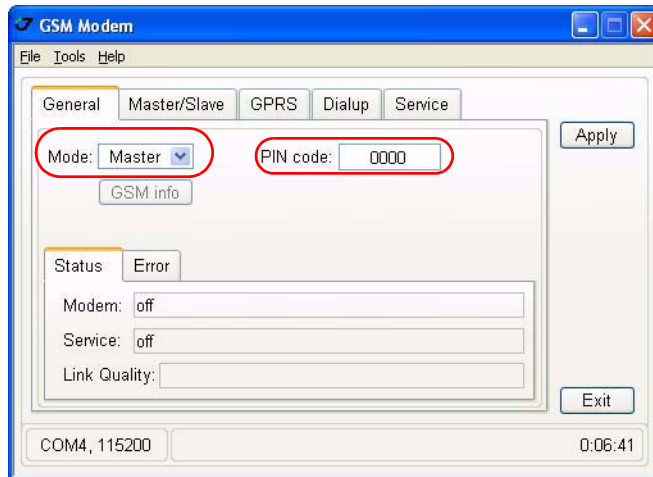


Figure 2-14. General tab settings

8. Wait until the modem will establish connection with net: the *Modem* status will be at first detecting, than registration. Wait until the connection with the Base will be established: the *Modem* status will be at first dialing, than connected with the connection baud rate value.

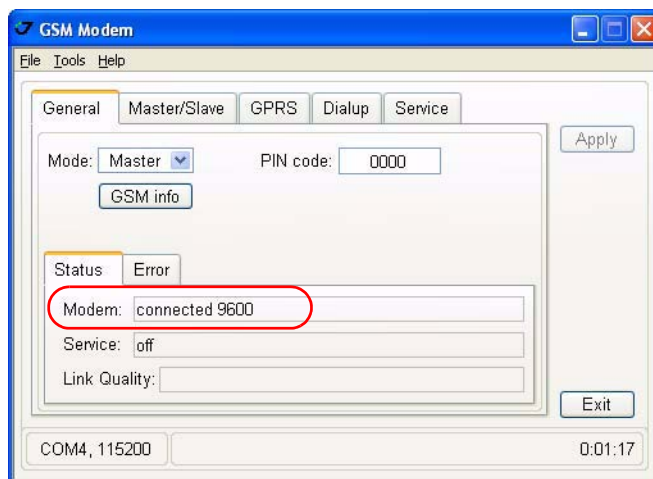


Figure 2-15. Modem status “connected”

9. Quit ModemVU by clicking *Exit* button.

10. Start TriVU. Select port the receiver is connected to and click OK (Figure 2-7).

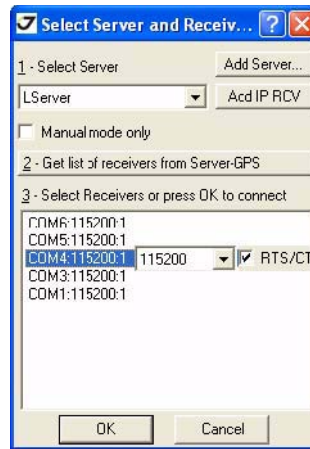


Figure 2-16. TriVU. Selecting port

11. Click *Configuration* ▶ *Receiver*.

12. In the *Positioning* tab set RTK fixed Mode, then click *Apply* (Figure 2-17).

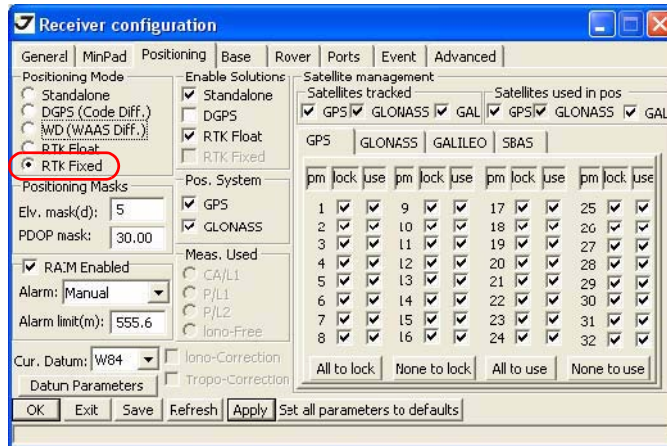


Figure 2-17. Positioning tab

13. In the *Rover* tab set RTK fixed mode (Figure 2-18), then click *Apply*:

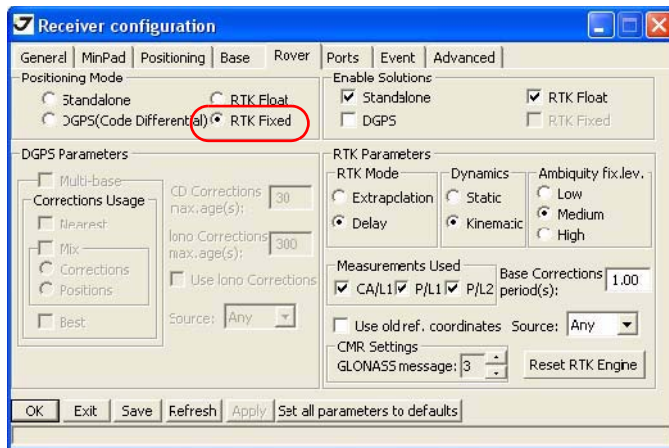


Figure 2-18. Rover tab

14. In the *Ports* tab *Serial* subtab set the *Input* mode for port C to CMR, then click *Apply* and *OK* (Figure 2-19).

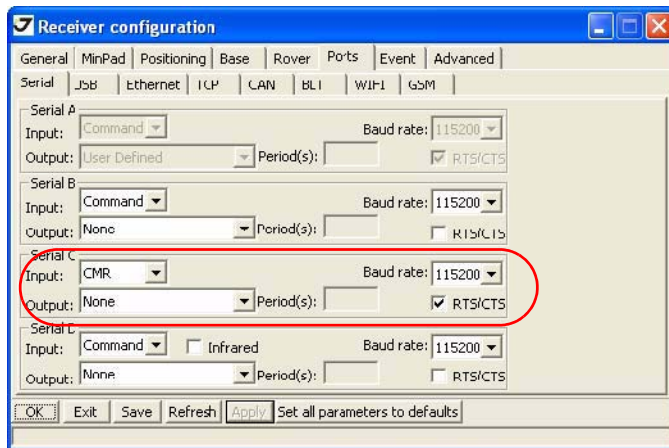


Figure 2-19. Ports tab

15. The receiver will obtain the RTK Fixed solution (Figure 2-20).

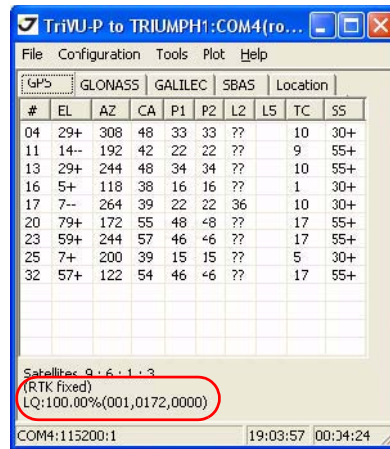


Figure 2-20. TriVU. RTK fixed



1731 Technology Drive, San Jose, CA 95110 USA

Phone: +1(408)573-8100

Fax: +1(408)573-9100

www.javad.com

Copyright © JAVAD GNSS, Inc., 2009
All rights reserved. No unauthorized duplication.