



GSM Base and Rover

Configuration Example for ALPHA Receiver

Version 1.0

Last Revised August 17, 2009

**All contents in this manual are copyrighted by JAVAD GNSS.
All rights reserved. The information contained herein may not be used, accessed, copied,
stored, displayed, sold, modified, published, or distributed, or otherwise reproduced without express
written consent from JAVAD GNSS.**

GSM BASE & ROVER CONFIGURATION EXAMPLE FOR ALPHA RECEIVER

Base Station Configuration

1. Start ModemVU.
2. Select *ALPHA* and click OK (Figure 2-1).

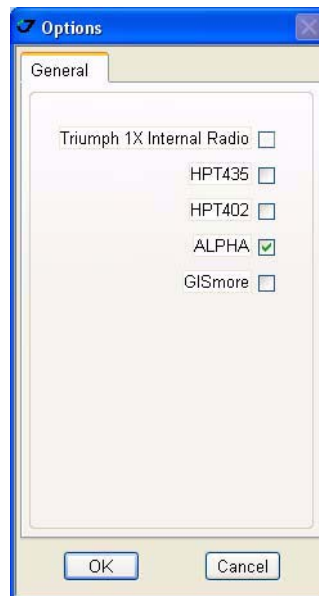


Figure 2-1. ModemVU. Options window

3. Select the port receiver is connected to and click *Connect* (Figure 2-2).



Figure 2-2. ModemVU. Connection

4. In the *Master/Slave* tab set the following parameters, and click *Apply* (Figure 2-3):

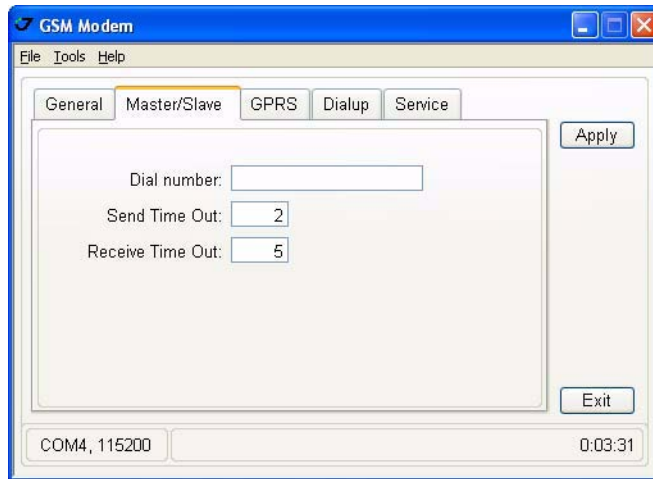


Figure 2-3. Master/Slave tab settings

- Dial number: empty
- Send Time Out: 2
- Receive Time Out: 5

5. In the *General* tab insert your SIM card PIN code (if needed), then set the mode to *Slave*, and click *Apply*.

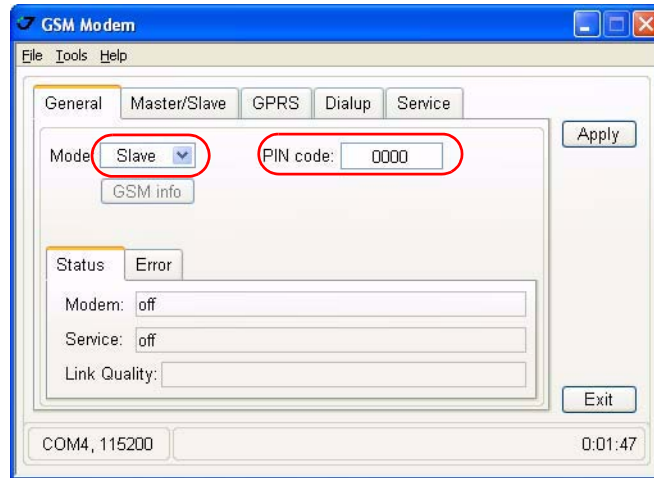


Figure 2-4. General tab settings

6. Wait until the modem will establish connection with net. The *Modem* status will be ready (at first detecting, registration, than ready).



Figure 2-5. Modem status “ready”

7. Quit ModemVU by clicking *Exit* button.

8. Start TriVU. Select port the receiver is connected to and click OK (Figure 2-6).

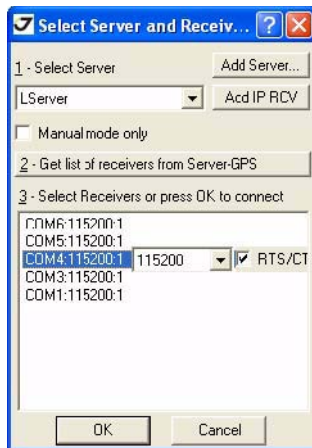


Figure 2-6. TriVU. Selecting port

9. Click *Configuration* ▶ *Receiver*.
10. In the *Base* tab click the *Get from receiver* button. Reference geodetic coordinates appear. Click *Apply* (Figure 2-7).

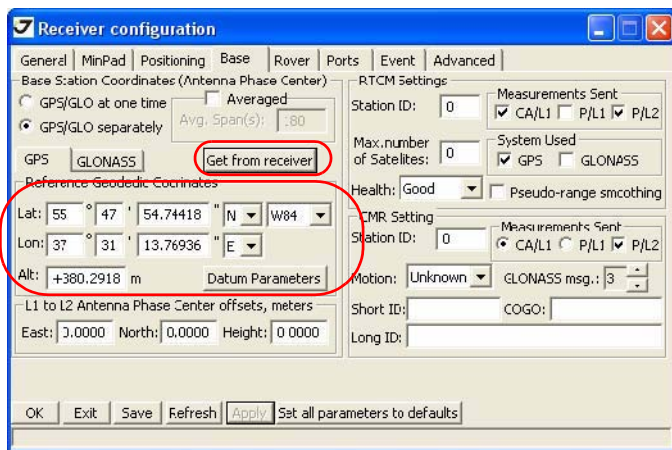


Figure 2-7. Base tab

11. In the *Ports* tab *Serial* subtab set the Port B *Output mode* to RTK CMR, and click *Apply*, then OK (Figure 2-8).

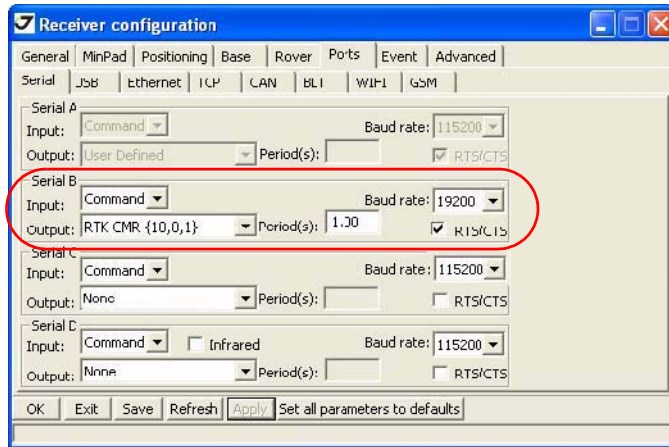


Figure 2-8. Rover tab

12. Quit TriVU.

Rover Configuration

1. Start ModemVU.
2. Select *ALPHA* and click OK (Figure 2-9).

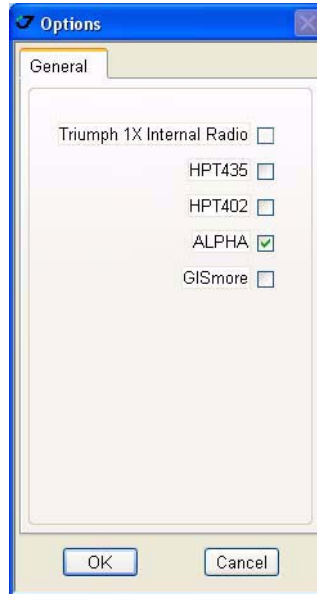


Figure 2-9. ModemVU. Options window

3. Select the port receiver is connected to and click *Connect* (Figure 2-10).



Figure 2-10. ModemVU. Connection

4. In the *Master/Slave* tab set the following parameters, and click *Apply* (Figure 2-3):

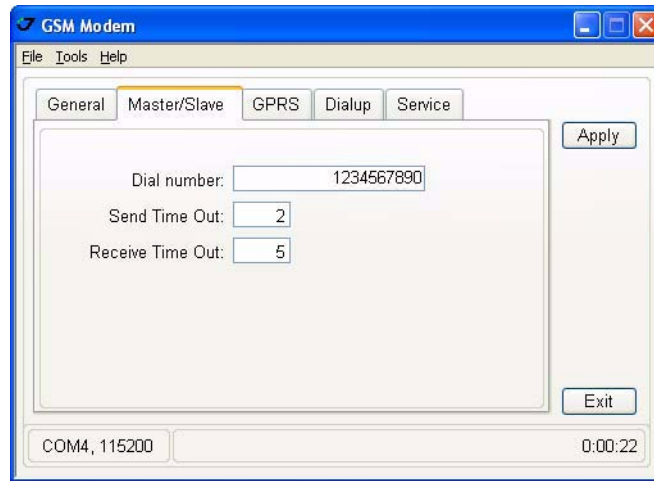


Figure 2-11. Master/Slave tab settings

- Dial number: phone number of the Base station's SIM card.
 - Send Time Out: 2
 - Receive Time Out: 5
5. In the *General* tab insert your SIM card PIN code (if needed), then set the mode to *Master*, and click *Apply*;

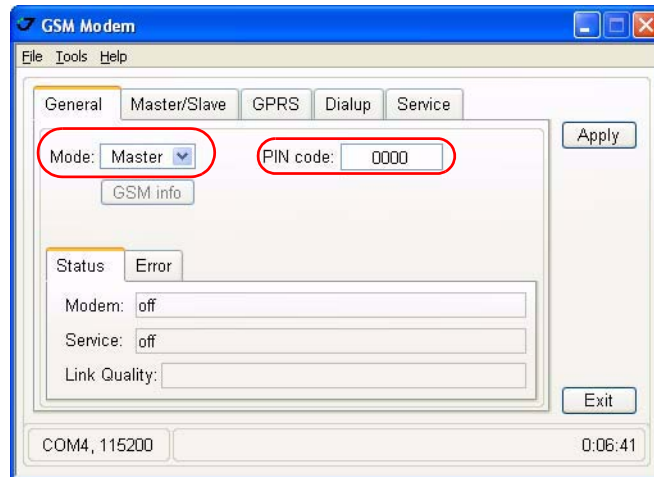


Figure 2-12. General tab settings

6. Wait until the modem will establish connection with net: the *Modem* status will be at first detecting, than registration. Wait until the connection with the Base will be

established: the *Modem* status will be at first dialing, than connected with the connection baud rate value .

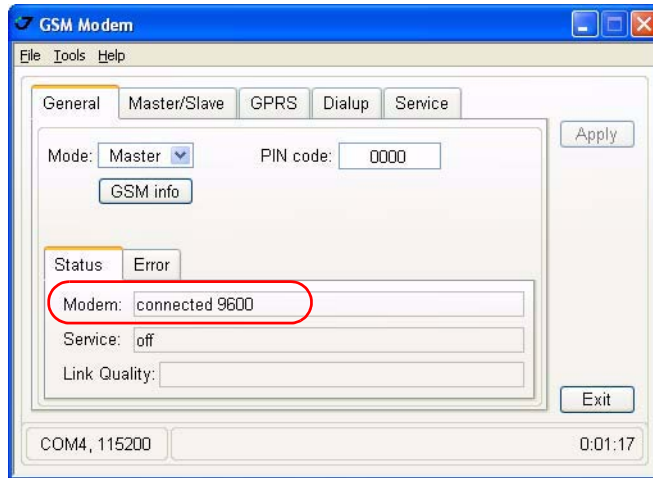


Figure 2-13. Modem status “connected”

7. Quit ModemVU by clicking *Exit* button.
8. Start TriVU. Select port the receiver is connected to and click OK (Figure 2-6).

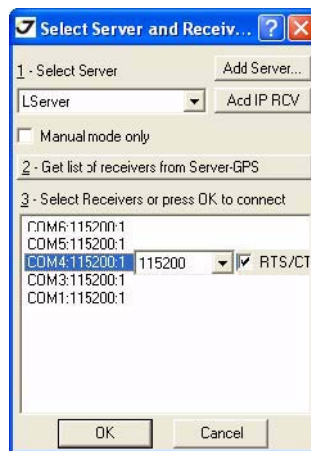


Figure 2-14. TriVU. Selecting port

9. Click *Configuration* ▶ *Receiver*.

10. In the *Positioning* tab set RTK fixed Mode, then click *Apply* (Figure 2-15).

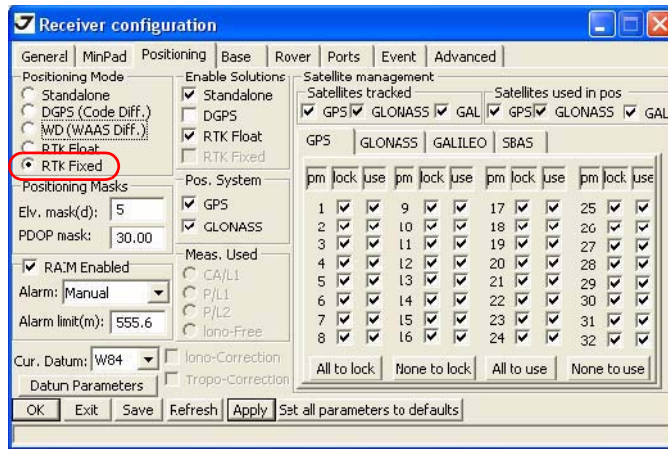


Figure 2-15. Positioning tab

11. In the *Rover* tab set RTK fixed mode (Figure 2-16), then click *Apply*:

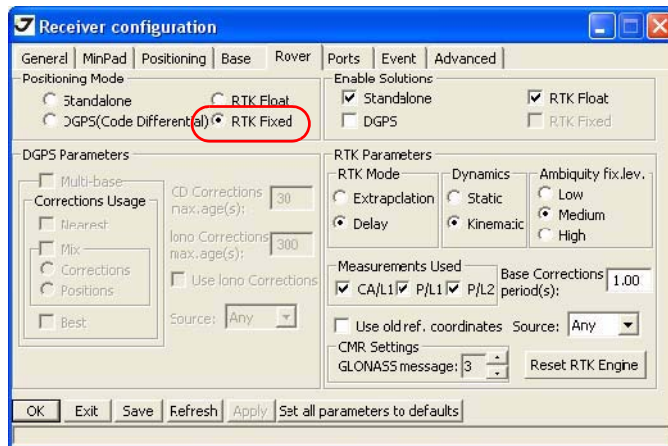


Figure 2-16. Rover tab

12. In the *Ports* tab *Serial* subtab set the *Input* mode for port B to CMR, then click *Apply* and OK (Figure 2-17).

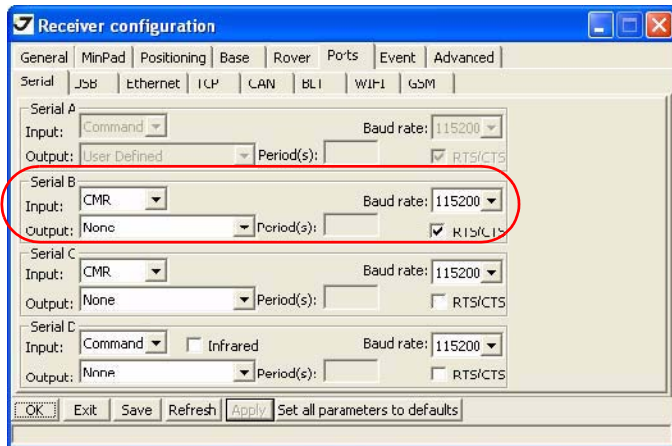


Figure 2-17. Ports tab

13. The receiver will obtain the RTK Fixed solution (Figure 2-18).

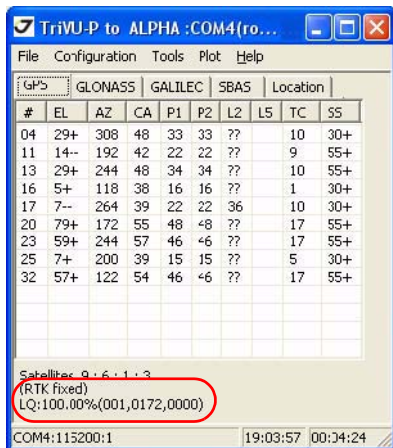


Figure 2-18. TriVU. RTK fixed



1731 Technology Drive, San Jose, CA 95110 USA

Phone: +1(408)573-8100

Fax: +1(408)573-9100

www.javad.com

Copyright © JAVAD GNSS, Inc., 2009
All rights reserved. No unauthorized duplication.