



JLink Lite in NTRIP to UHF mode

Configuration Example

Version 1.0

Last revised May 14, 2012

**All contents in this manual are copyrighted by JAVAD GNSS.
All rights reserved. The information contained herein may not be used, accessed, copied,
stored, displayed, sold, modified, published, or distributed, or otherwise reproduced without express written
consent from JAVAD GNSS**

JLINK LITE IN NTRIP TO UHF MODE

After configuring the device according this configuration example, it will work as follows: after turning on the GSM modem is registering in the network and the GPRS is connecting to the Internet. NTRIP client connects to the NTRIP caster, to receive the corrections. The received corrections are forwarding to the UHF modem and are transmitting over the air. All UHF modems which are in receive mode and in coverage range of the transmitter will receive these corrections.

1. Connect JLink Lite to PC's COM port using serial cable.
2. Run ModemVU software.
3. Select JLink Lite device and press OK button in *Options* window. Select COM port for JLink Lite is connected to and press *Connect* button.

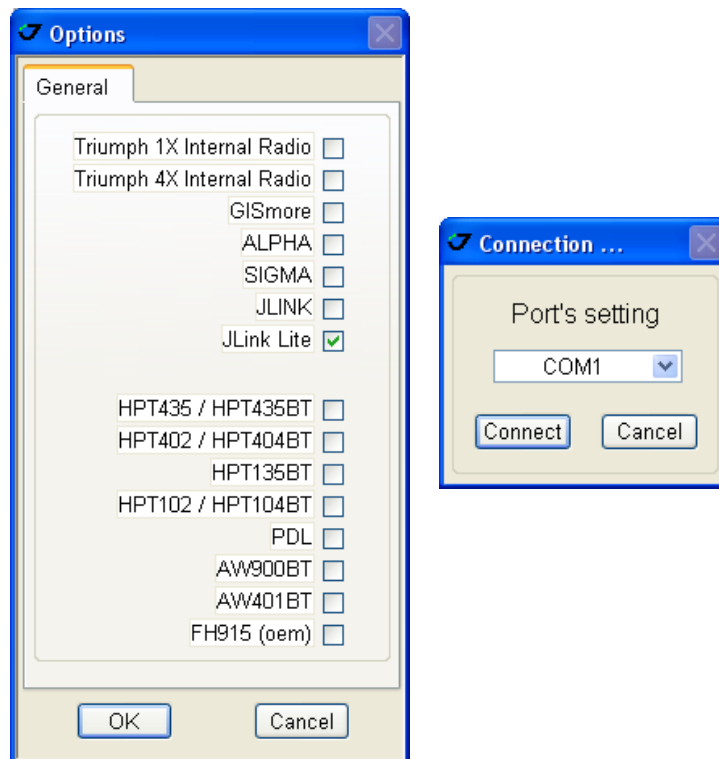


Figure 1. Options window

4. Configure the UHF radio in UHF tab and press *Apply* button.

Note: The Transmitter Protocol should be selected for transmitting corrections from NTRIP Caster to Rovers.

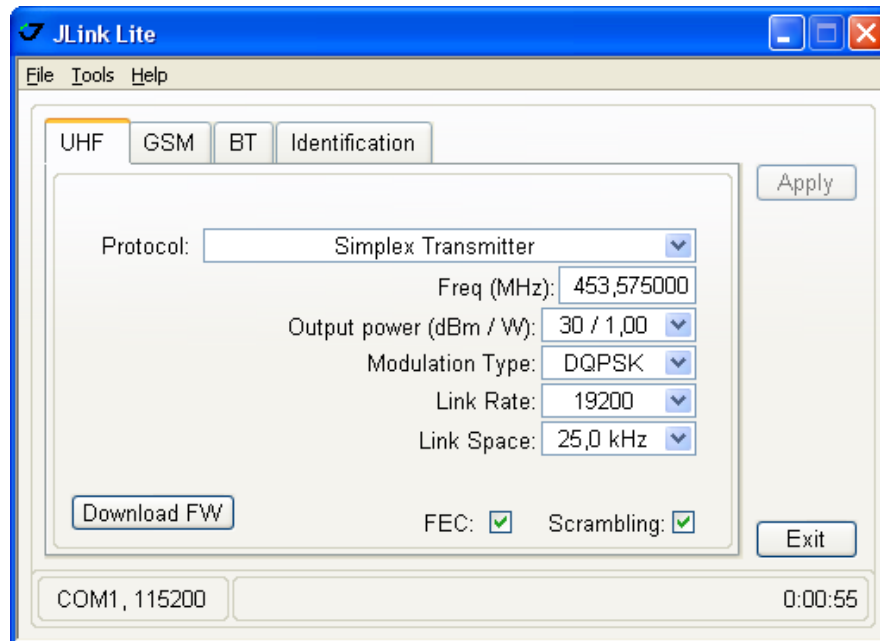


Figure 2. UHF tab

5. Configure GPRS parameters in GSM tab in the *GPRS* subtab and press *Apply* button.

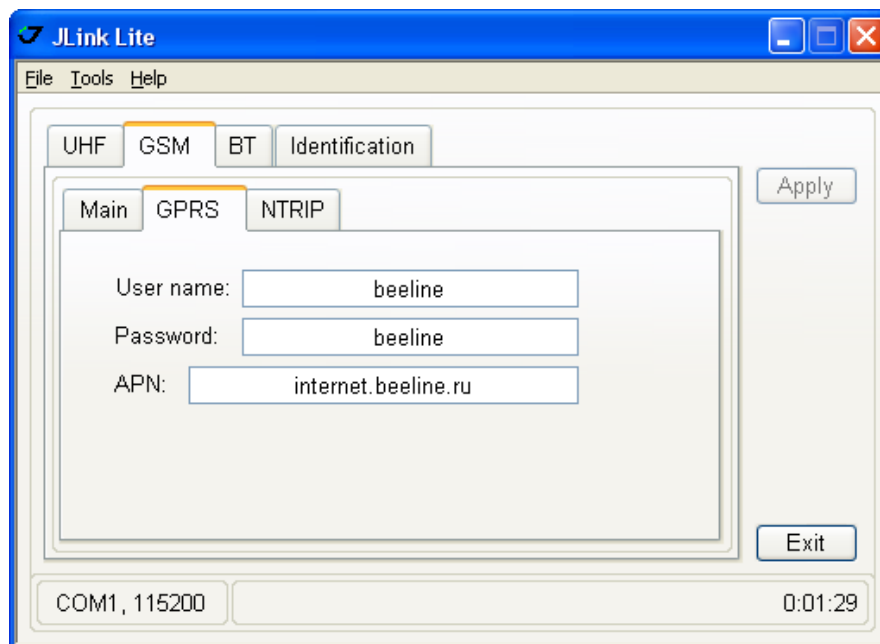


Figure 3. GPRS subtab

Note: This information is provided by cell provider.

JLink Lite in NTRIP to UHF mode

- Set up NTRIP parameters in the NTRIP subtab and press *Apply* button.

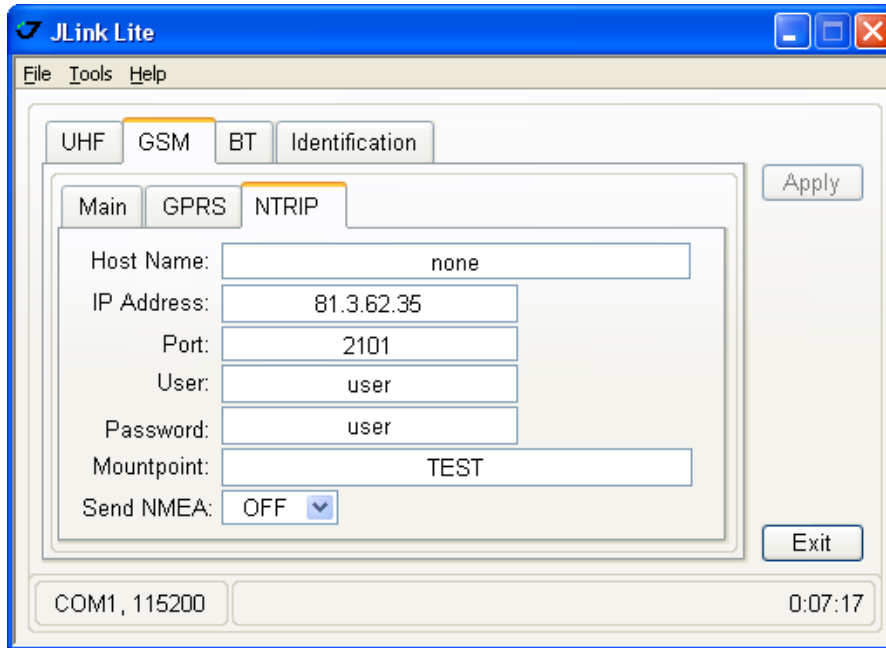


Figure 4. NTRIP subtab

Note: This information is provided by NTRIP Caster.

- Enter SIM card's PIN code (if needed), then set the mode to GPRS in *Main* subtab and press *Apply* button.

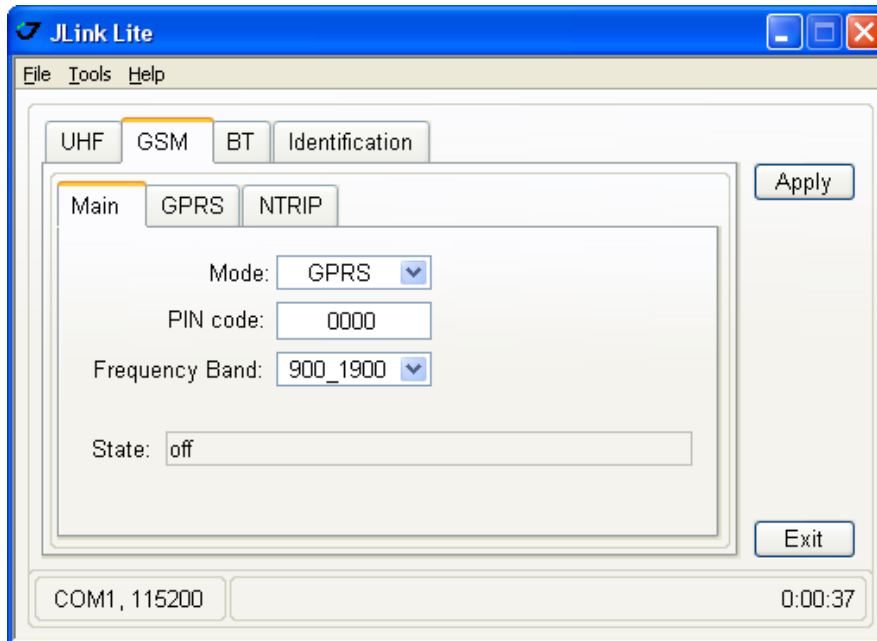


Figure 5. Main subtab

8. Wait until State will be “connected”. Quit ModemVU by clicking *Exit* button, to prevent the improper receipt of corrections.

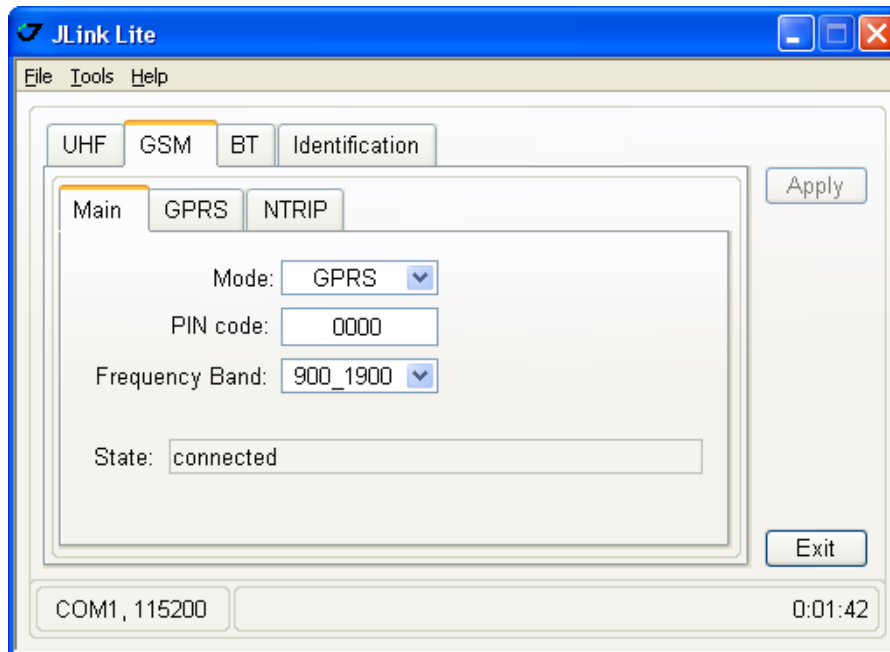


Figure 6. Satus of GPRS- connected

Note: The GSM LED and UHF LED are blinking when corrections are directed from GSM modem (from NTRIP Caster) to UHF radio (for transmitting to Rovers).

All settings are saved in the JLink Lite’s memory and will be re-called after turning on the device (it is not need to configure the device again after turning it on).



900 Rock Avenue, San Jose, CA 95131 USA

Phone: +1(408)770-1770

Fax: +1(408)770-1799

www.javad.com

Copyright © JAVAD GNSS, Inc., 2012
All rights reserved. No unauthorized duplication.