



# **Data Dictionary**

## **Work with Attributes**

**Version: 1.0**

**Last Revised: August 29, 2012**


**All contents in this manual are copyrighted by JAVAD GNSS.  
All rights reserved. The information contained herein may not be used, accessed, copied,  
stored, displayed, sold, modified, published, or distributed, or otherwise reproduced without express written  
consent from JAVAD GNSS**

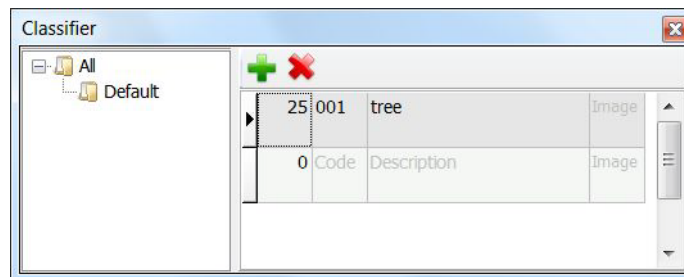


# WORK WITH DATA DICTIONARY

By surveying the object code should be assigned to each point. These codes are downloaded from the dictionary files and exported to the controller, additionally they can be edit in field.

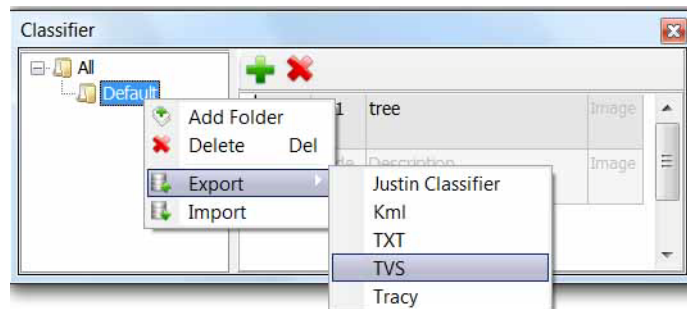
To download Data dictionary start Justin Link free software (available for free downloading at [www.javad.com](http://www.javad.com)).

Click  button. *Classifier* window appears. Here you can add new codes.



**Figure 1. Classifier**

Select the code library on the left and with the right mouse click select *Export* ▶ *TVS*:

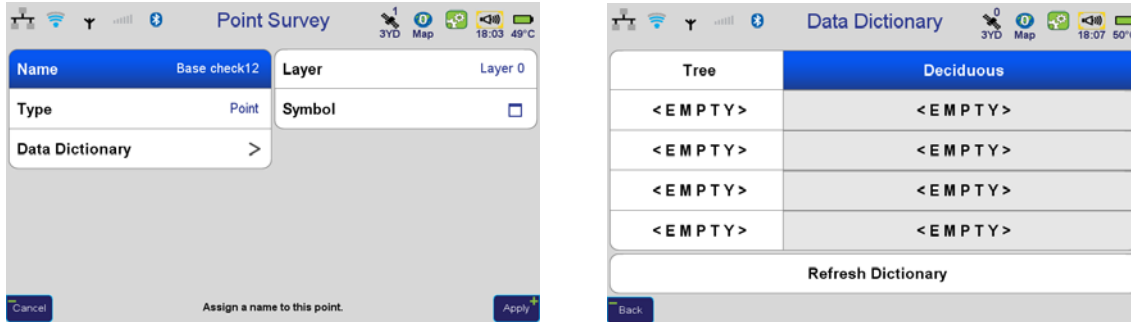


**Figure 2. Export to TRIUMPH-VS**

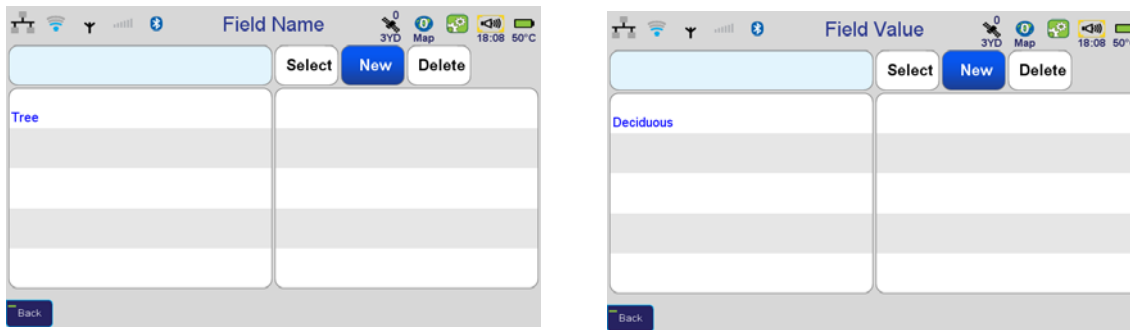
Selected codes will be added to the data dictionary of the selected device (e.g. TRIUMPH-VS). Select the needed attribute from the list and assign it to the surveyed point.

## Work with Data Dictionary

Tap *Data Dictionary* in the *Point Survey* screen to add attributes to the point from the Data dictionary.



**Figure 3. Point attributes**



**Figure 4. Adding new codes**

In the *Field Name* and *Field Value* screens you can select the codes from the list and/or add new values using the *New* button.

After the field work, data is transferred to Justin Link. Assigned to each point attributes are exported with the points.





900 Rock Avenue, San Jose, CA 95131 USA

Phone: +1(408)770-1770

Fax: +1(408)770-1799

[www.javad.com](http://www.javad.com)

Copyright © JAVAD GNSS, Inc., 2012  
All rights reserved. No unauthorized duplication.