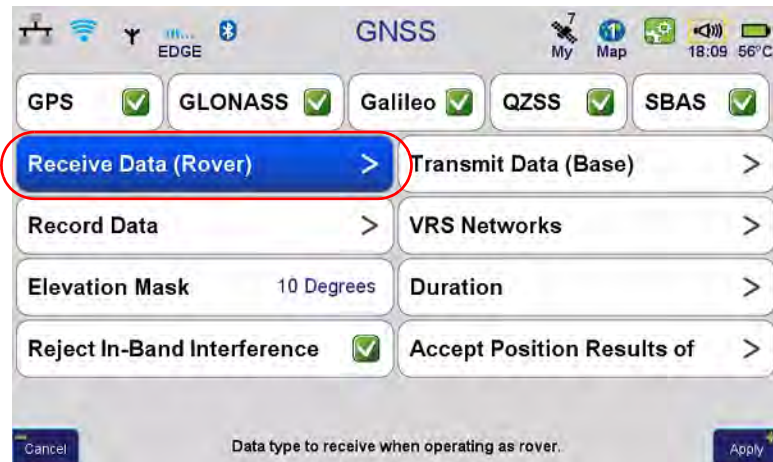


# VRS NTRIP CLIENT CONFIGURATION EXAMPLE

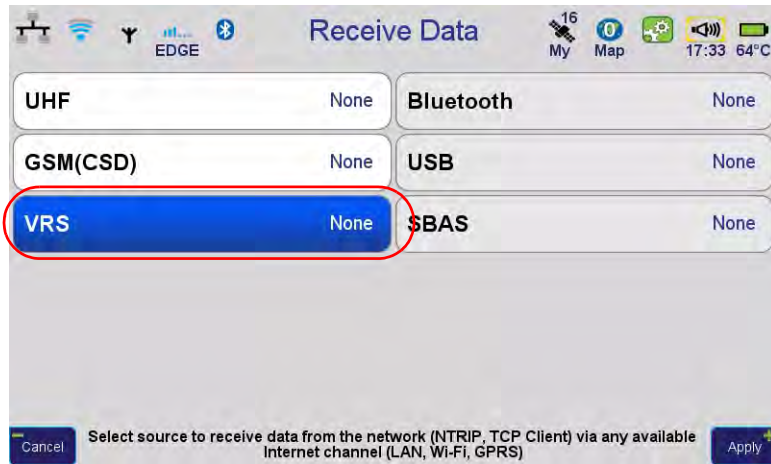
1. Install SIM card. See appropriated example for more details. Skip this step if you are not going to use GPRS.
2. Turn on your TRIUMPH-VS.
3. Configure GPRS. See appropriated example for more details. Skip this step if you are not going to use GPRS.
4. Connect TRIUMPH-VS to the Internet using Ethernet or WiFi.  
Though the VRS connection in the field is established usually trough GPRS, it is more convenient to set up and verify it in the office using Ethernet or WiFi.
5. On the Main screen tap *Settings* ▶ *GNSS* ▶ *Receive Data (Rover)*:



**Figure 1. Receive Data**

## VRS NTRIP Client Configuration Example

6. Tap *VRS*:



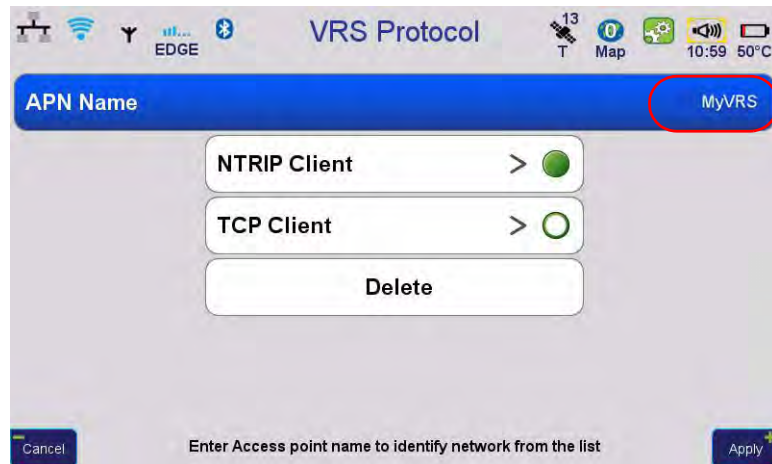
**Figure 2. VRS**

7. Tap *Add* to create new VRS connection and add to the list:



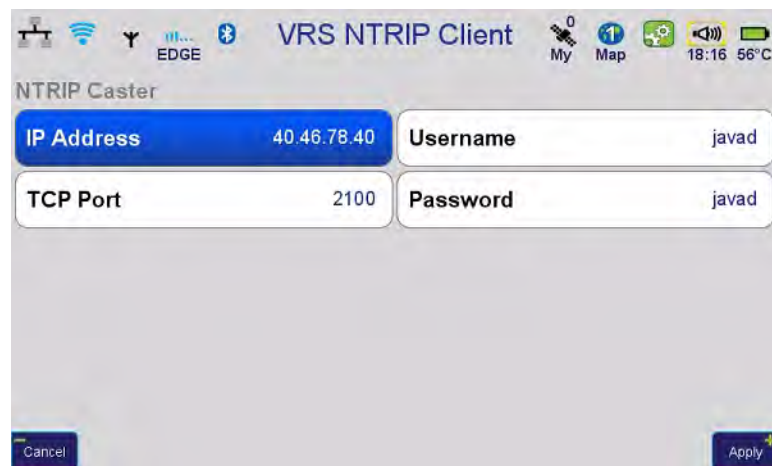
**Figure 3. Add VRS connection**

8. Enter the name of your new VRS connection:



**Figure 4. VRS settings**

9. Tap *NTRIP Client*, if it is your choice, and configure the NTRIP Caster parameters and tap *Apply*.



**Figure 5. NTRIP Caster settings**

All these parameters take from your NTRIP/VRS provider.

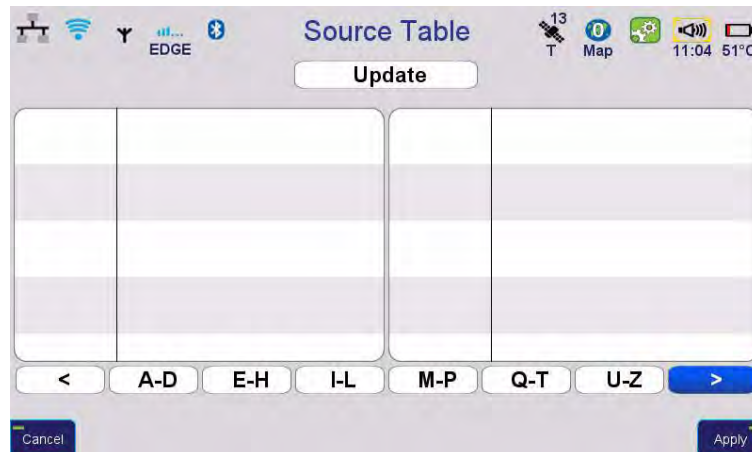
## VRS NTRIP Client Configuration Example

10. Enter manually the mount point parameters, or tap *Source Table* to read all available mount points from your caster.



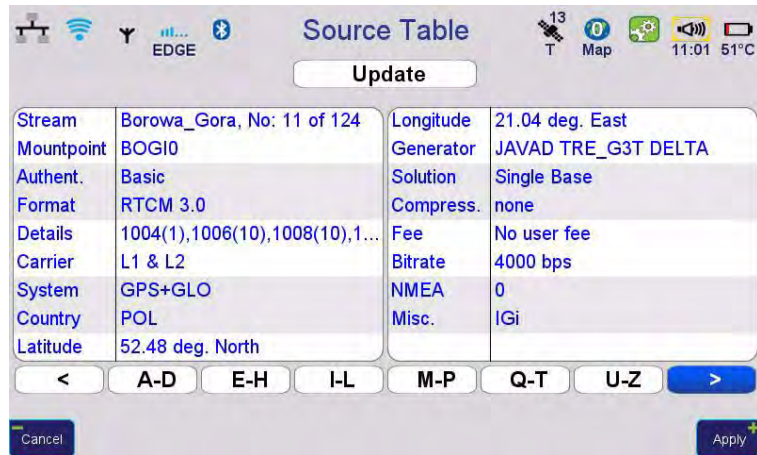
**Figure 6. Mount point setting**

11. To update source table information tap *Update*:



**Figure 7. Source table reading**

After source table was downloaded, select the desired mount point from the list and tap *Apply*.



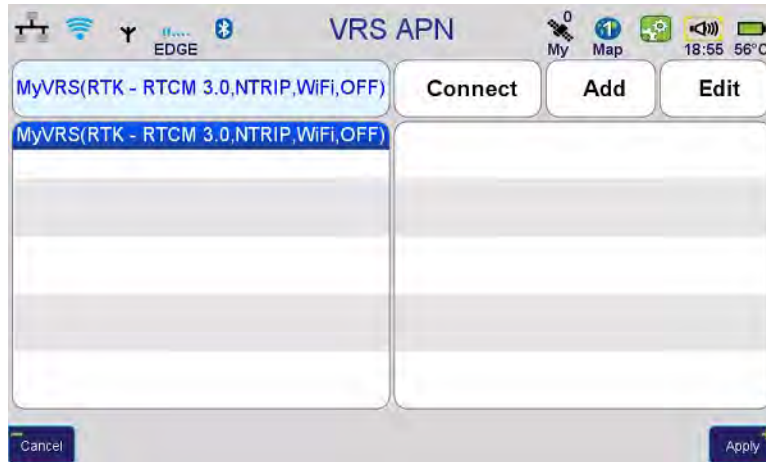
**Figure 8. Mount point parameters**



**Figure 9. Selected mount point**

## VRS NTRIP Client Configuration Example

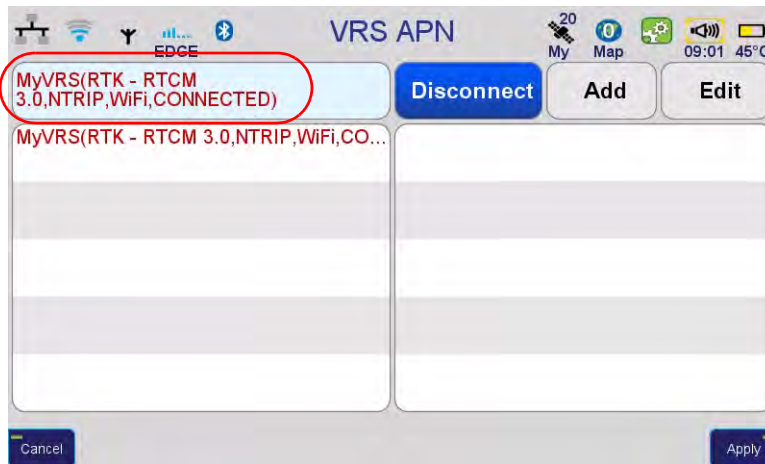
12. Tap *Apply* till you will return to VRS APN screen:



**Figure 10. VRS APN screen**

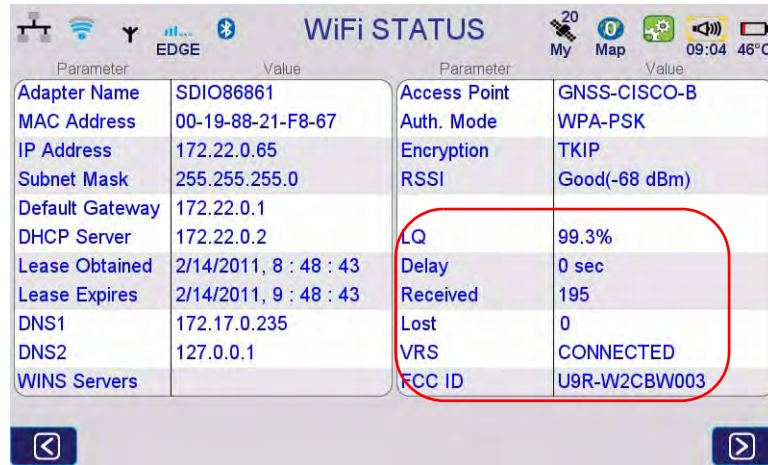
Select desired VRS connection from the list and tap *Connect*.

13. Ensure the VRS connection status in the list changed from OFF to Connected and the whole string has been highlighted.



**Figure 11. VRS Connection Status**

14. Tap the WiFi or Ethernet icon (depending on the connection type has ben established) on the top of screen and check WiFi/Ethernet status, to ensure the VRS connection has been successfully established.



**Figure 12. WiFi Status**

15. Press FN button to open action screen with corrections received.
16. Disconnect Ethernet cable or close WiFi connection. Correction receive will stop. After 1 minute the correction automatically will start again via GPRS. Skip this step if you are not going to use GPRS.
17. Tap GSM status window and check the following parameters (Skip this step if you are not going to use GPRS):
  - GPRS - connected;
  - VRS - connected;
  - Counter of received messages is continuously increased.
18. Press FN button and wait few seconds for RTK Fixed.