



UHF with Satel Protocol

Configuration Example

Version 1.2

Last Revised April 7, 2010

All contents in this manual are copyrighted by JAVAD GNSS.
All rights reserved. The information contained herein may not be used, accessed, copied, stored, displayed, sold, modified, published, or distributed, or otherwise reproduced without express written consent from JAVAD GNSS.

UHF WITH SATEL PROTOCOL CONFIGURATION EXAMPLE

Please do not forget to attach the UHF/GSM antenna to TRIUMPH-1.

Attaching UHF/GSM Antenna

A broadband, rugged, in-building or outdoor antenna designed to service the whole 406-470 MHz UHF band and GSM quad band. With modest dimensions of 25 mm (OD) x 182 mm (height), this antenna radiates with a typical peak omnidirectional gain of +1 dBi. Internally, the radiating element is DC shunted to help protect the transceiver from nearby, but not direct ElectroStatic Discharge (ESD).

The TRIUMPH-1 modem antenna can be mounted on standard poles (5/8-11 inches thread). Attached to the TRIUMPH-1 receiver this antenna gets a part of survey pole, making handling with receiver easy and simple.



Figure 3-1. TRIUMPH-1 External UHF/GSM Antenna

Base Station Configuration

1. Start ModemVU.
2. Select *Triumph 1X Internal Radio* and click OK (Figure 3-2).

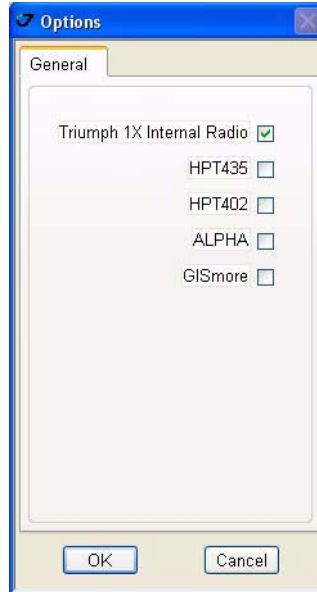


Figure 3-2. ModemVU. Options window

3. Select the port receiver is connected to and click *Connect* (Figure 3-3).



Figure 3-3. ModemVU. Connection

4. Select the *ON* mode for *Radio*, click *Apply*, and then click *Connect Radio* button (Figure 3-4).



Figure 3-4. ModemVU TRIUMPH Internal Radio selection

5. In the *Radio Link* tab set the following parameters, and click *Apply* (Figure 3-5):

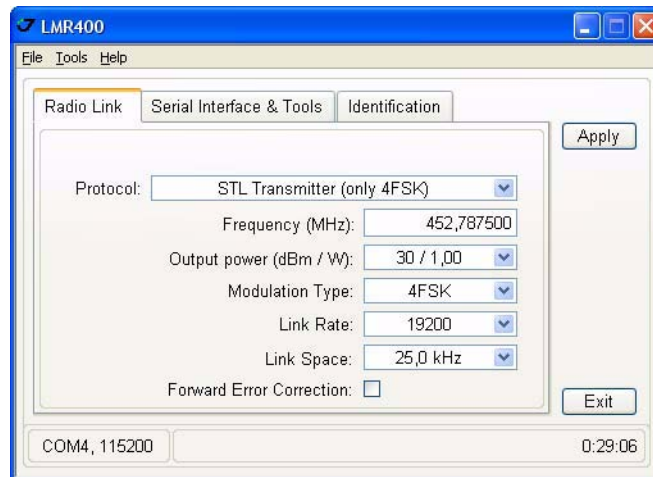


Figure 3-5. Radio Link tab settings

- Protocol: STL Transmitter (only 4FSK)
 - Frequency (MHz): 406 to 470
 - Output power (dBm/W): 30/1.00
 - Modulation Type: 4FSK
 - Link Rate: 19200
 - Link Space: 25.0 kHz
 - Forward Error Corrections: OFF
6. Quit ModemVU by clicking *Exit* button.

UHF with Satel protocol Configuration Example

Base Station Configuration
Attaching UHF/GSM Antenna

7. Start TriVU. Select port the receiver is connected to and click OK (Figure 3-6).

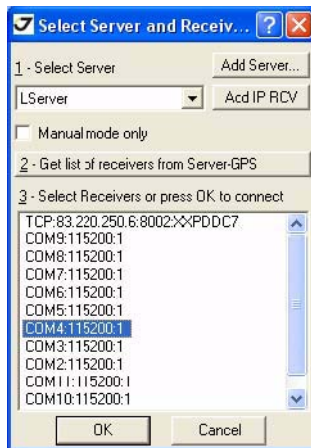


Figure 3-6. TriVU. Selecting port

8. Click *Configuration* ▶ *Receiver*.
9. In the *Base* tab click the *Get from receiver* button. Reference geodetic coordinates appear. Click *Apply* (Figure 3-7).

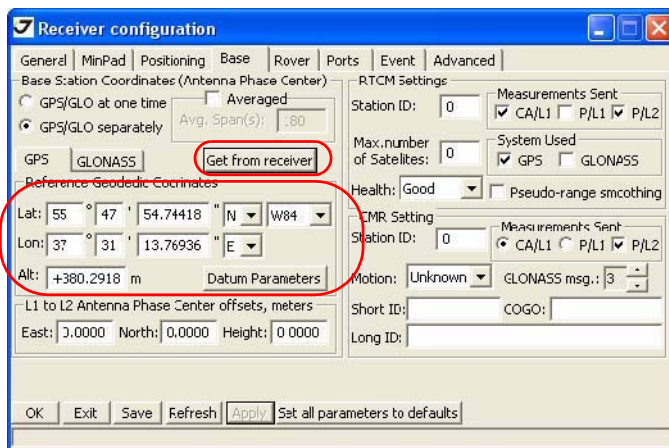


Figure 3-7. Base tab

- In the *Ports* tab set the Port D *Output mode* to RTK CMR, and click *Apply*, then OK (Figure 3-8).

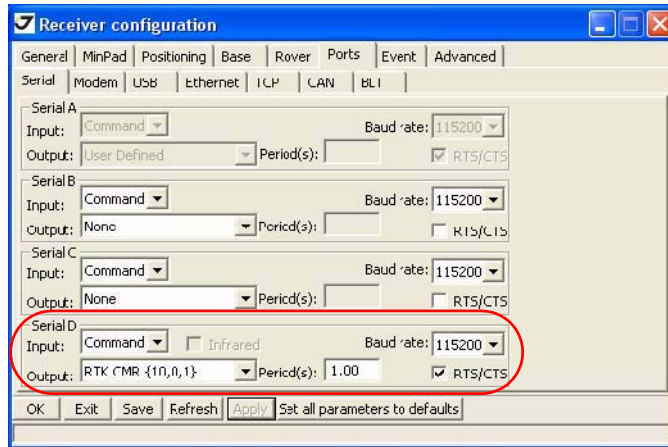


Figure 3-8. Rover tab

- Click *File* ▶ *Exit* to quit TriVU.

Rover Configuration

1. Start ModemVU.
2. Select *Triumph 1X Internal Radio* and click OK (Figure 3-9).

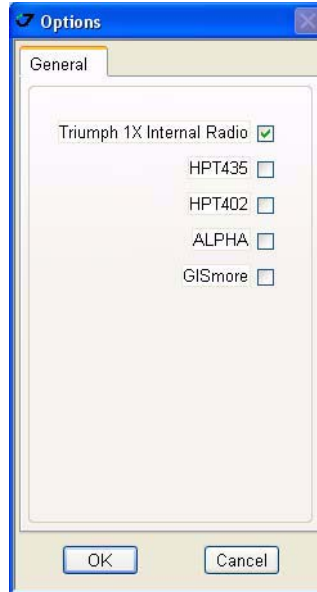


Figure 3-9. ModemVU. Options window

3. Select the port receiver is connected to and click *Connect* (Figure 3-10).



Figure 3-10. ModemVU. Connection

4. Select the *ON* mode for *Radio*, click *Apply* and click *Connect Radio* button (Figure 3-11).



Figure 3-11. ModemVU TRIUMPH Internal Radio selection

5. In the *Radio Link* tab set the following parameters, and click *Apply* (Figure 3-12):

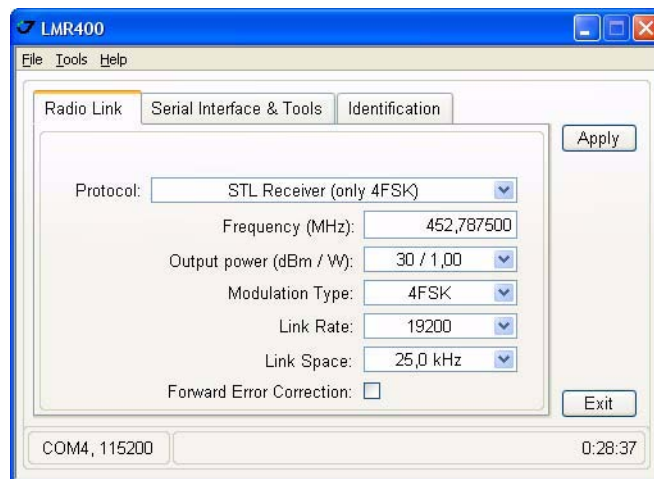


Figure 3-12. Radio Link tab settings

- Protocol: STL Receiver (only 4FSK)
- Frequency (MHz): 406 to 470
- Output power (dBm/W): 30/1.00
- Modulation Type: 4FSK
- Link Rate: 19200
- Link Space: 25.0 kHz
- Forward Error Corrections: OFF

UHF with Satel protocol Configuration Example

Rover Configuration
Attaching UHF/GSM Antenna

6. In the *Serial Interface & Tools* tab set the desired *Clock correction* value (ON/OFF), and click *Apply* (Figure 3-13).

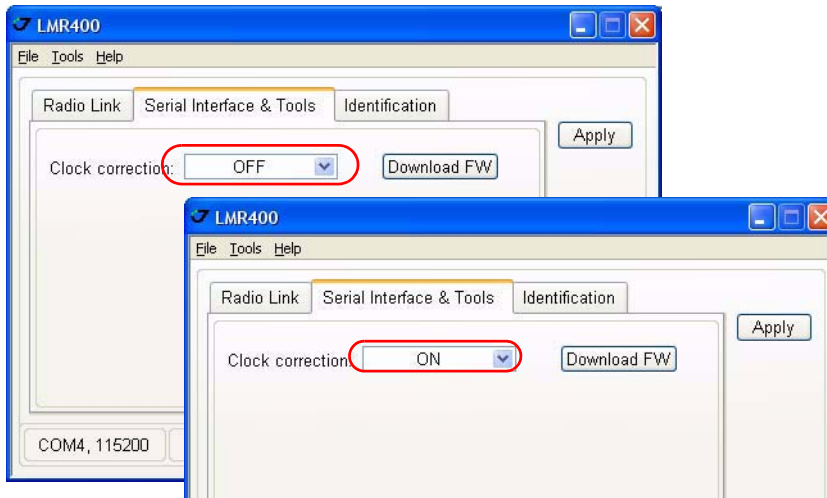


Figure 3-13. Clock correction parameter

Note: The different Satel Radio models may require or not the *Clock correction* parameter activation. It is strongly recommended to make sure if this parameter is required to be activated. To do this make the following: change the value of this parameter and control LQ (see Figure 3-18 on page 12). The maximal value of LQ parameter shows that the *Clock correction* parameter is set correctly.

7. Quit ModemVU by clicking *Exit* button.
8. Start TriVU. Select port the receiver is connected to and click OK (Figure 3-6).

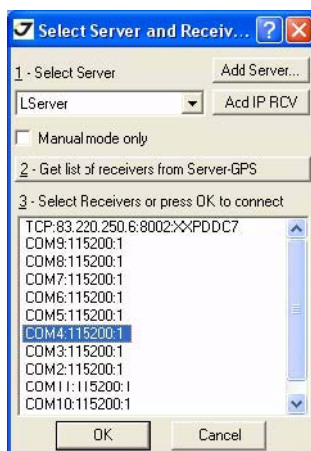


Figure 3-14. TriVU. Selecting port

9. Click *Configuration* ▶ *Receiver*.

10. In the *Positioning* tab set RTK fixed *Positioning Mode*, then click *Apply* (Figure 3-15).

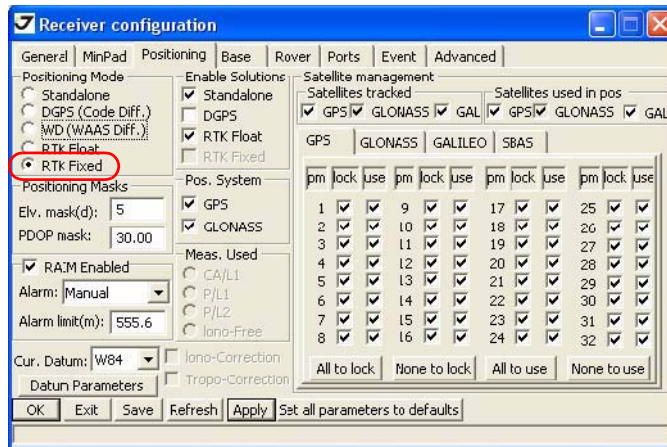


Figure 3-15. Positioning tab

11. In the *Rover* tab set RTK fixed mode (Figure 3-16), then click *Apply*:

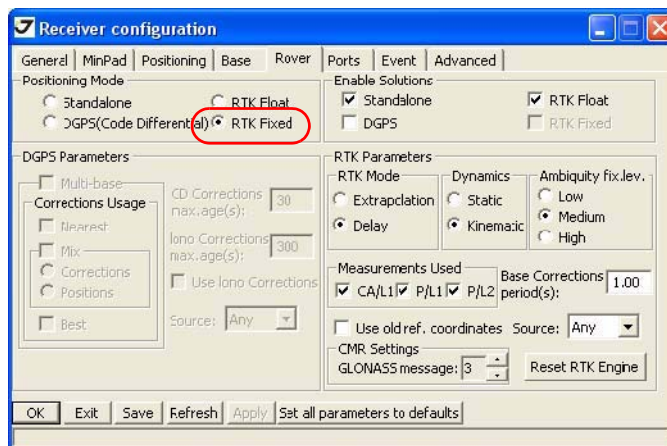


Figure 3-16. Rover tab

UHF with Satel protocol Configuration Example

Rover Configuration
Attaching UHF/GSM Antenna

12. In the *Ports* tab set the *Input* mode for port D to CMR, then click *Apply* and OK (Figure 3-17).

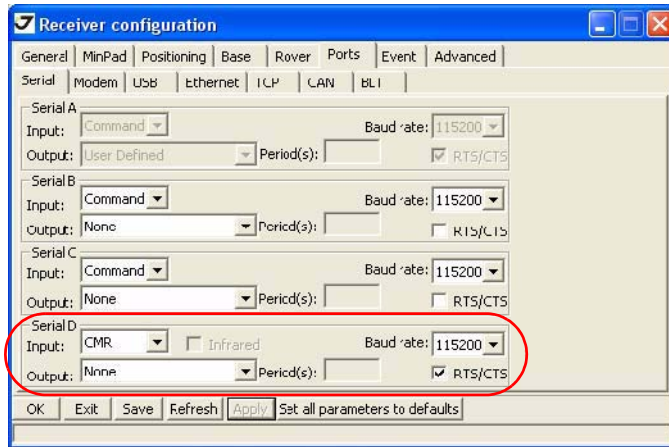


Figure 3-17. Ports tab

13. The receiver will obtain the RTK Fixed solution (Figure 3-18).

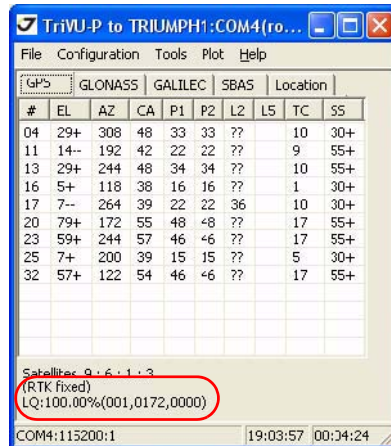


Figure 3-18. TriVU. RTK fixed

READER COMMENT FORM

We appreciate your comments and suggestions for improving this publication.

I use the following JAVAD GNSS product _____

for _____

Please circle a response for each of the statements below:

1 = Strongly Agree 2 = Agree 3 = Neutral 4 = Disagree 5 = Strongly Disagree

The manual is well organized.	1	2	3	4	5
I can find the information I want.	1	2	3	4	5
The information in the manual is accurate.	1	2	3	4	5
I can easily understand the instructions.	1	2	3	4	5
The manual contains enough examples.	1	2	3	4	5
The examples are appropriate and helpful.	1	2	3	4	5
The layout and format are attractive and useful.	1	2	3	4	5
The illustrations are clear and helpful.	1	2	3	4	5
The manual is:	too long just right too short				

Please answer the following questions:

Which sections do you use the most? _____

What do you like best about the manual? _____

What do you like least about the manual? _____

Optional

Name _____

Company _____

Address _____

Telephone _____ Fax _____

Please mail to the JAVAD GNSS local office listed on the back cover. All comments and suggestions become the property of JAVAD GNSS.



900 Rock Avenue, San Jose, CA 95131 USA

Phone: +1(408)770-1770

Fax: +1(408)770-1799

www.javad.com

Copyright © JAVAD GNSS, Inc., 2010
All rights reserved. No unauthorized duplication.