



# **RCV Client**

## **Configuration Example**

**Version 1.0**

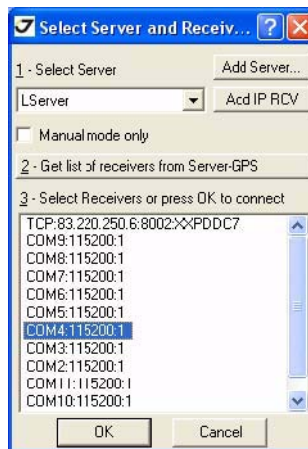
**Last Revised September 1, 2009**

**All contents in this manual are copyrighted by JAVAD GNSS.  
All rights reserved. The information contained herein may not be used, accessed, copied,  
stored, displayed, sold, modified, published, or distributed, or otherwise reproduced without express  
written consent from JAVAD GNSS.**

# RCV CLIENT CONFIGURATION EXAMPLE

## Base (RCV Server) Setup

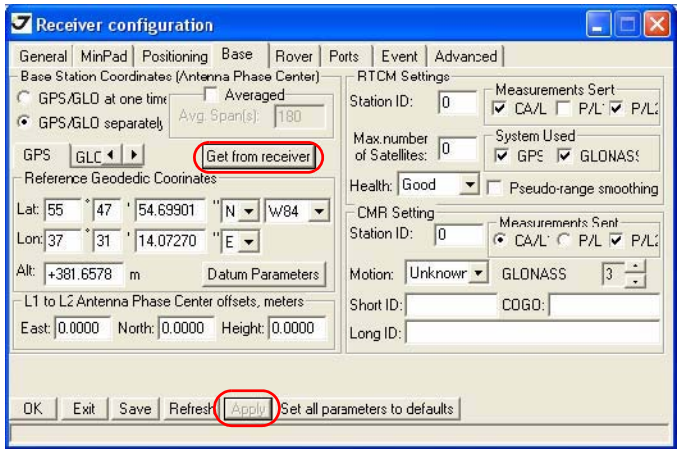
1. Start TriVU.
2. Select the port receiver is connected to (Figure 1-1).



**Figure 1-1. TriVU. Select port**

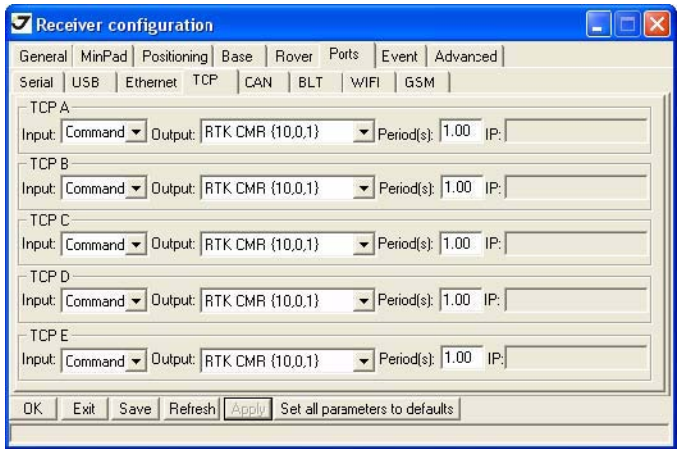
3. Click *Configuration* ▶ *Receiver*.

4. Open the *Base* tab, and click *Get from receiver* button to set Reference Geodetic Coordinates. Then click *Apply* (Figure 1-2).



**Figure 1-2. Base tab settings**

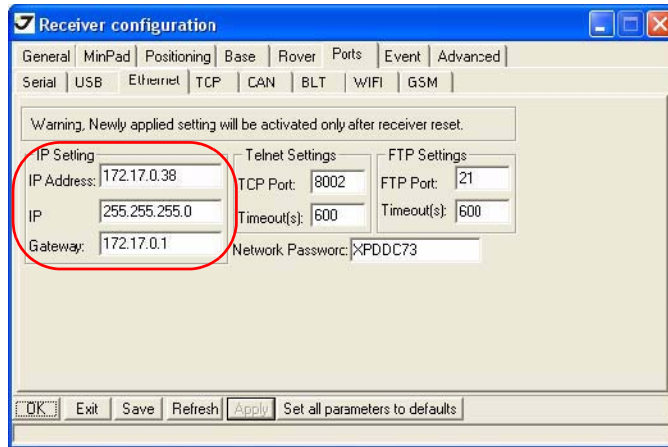
5. Open the *Ports* tab *TCP* subtab. Set the output mode for the TCP ports (A, B, C, D, or E) to RTK CMR, then click *Apply* (Figure 1-3).



**Figure 1-3. Ports tab. TCP subtab**

**Note:** Max number of the rovers depends of the number of TCP ports. The max number of TCP ports is optional and it can be no more than 5.

- In the *Ethernet* subtab set the IP Settings (IP Address, IP, and Gateway) to connect to the network, if Ethernet connection is used. Click *Apply* and then *Ok* (Figure 1-4).



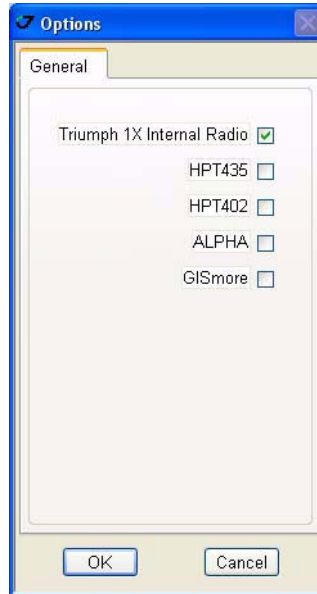
**Figure 1-4. Ports tab. Ethernet subtab**

**Note:** IP Address must be public and static.

- Reset your receiver by clicking *Tools* ▶ *Reset Receiver*.
- After receiver has been reset, close TriVU.
- Connect the receiver to Ethernet using the appropriate cable.

## Rover (RCV Client) Setup

1. Start ModemVU.
2. Select *Triumph 1X Internal Radio* and click OK (Figure 1-5).



**Figure 1-5. ModemVU. Options window**

3. Select the port receiver is connected to and click *Connect* (Figure 1-6).



**Figure 1-6. ModemVU. Connection**

4. Select the *OFF* mode for GSM, click *Apply*, and then click *Connect GSM* button (Figure 1-7).



**Figure 1-7. ModemVU TRIUMPH Internal Radio selection**

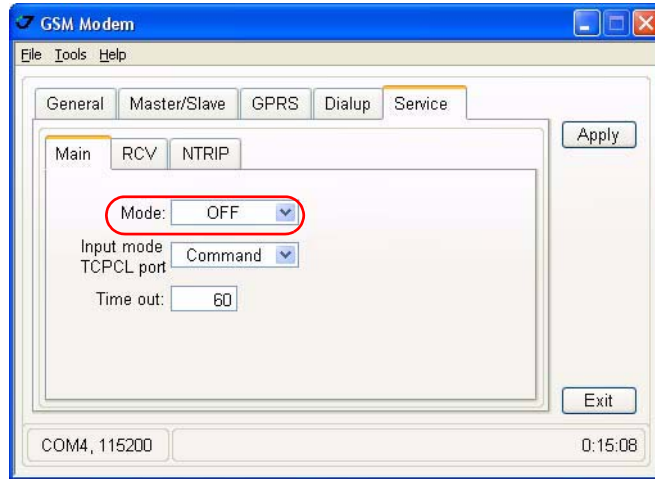
5. In the *GPRS* tab in the *Main* subtab set up GPRS parameters, and click *Apply*:
  - Dial number
  - User name
  - Password
  - Access Point Name
  - PDP context identifier

**Note:** This information usually is given by cell provider (Figure 1-8).



**Figure 1-8. GPRS example settings for BEELINE**

6. In the *Service* tab in the *Main* subtab set the mode to *OFF*. Click *Apply* (Figure 1-9).



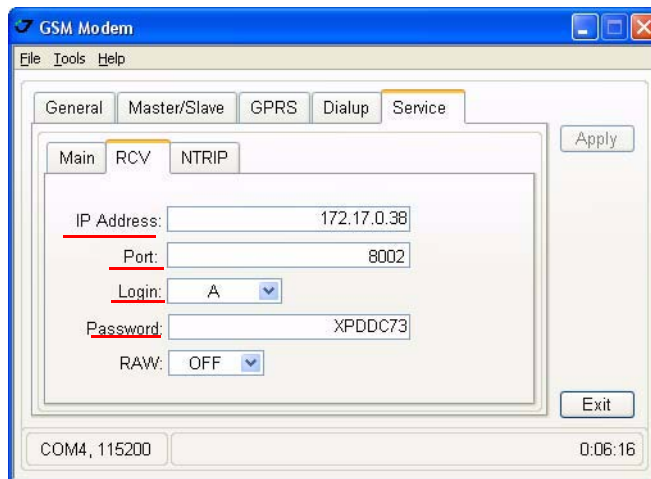
**Figure 1-9. Service tab. Main subtab**

7. In the RCV subtab set the RCV client parameters:

- IP Address (of the base receiver, see Figure 1-4 on page 4)
- Port (of the base receiver, see Figure 1-4 on page 4)
- Login (port of the base receiver, see Figure 1-3 on page 3)
- Password (of the base receiver, see Figure 1-4 on page 4)

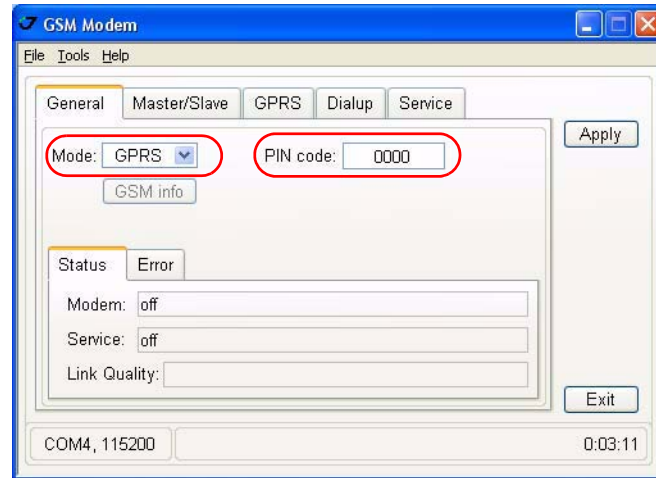
**Note:** Usually this information is given by reference stations' network.

Set the RAW to OFF, then click *Apply* (Figure 1-10)



**Figure 1-10. Settings for RCV client**

8. In the *General* tab insert your SIM card PIN code (if needed), then set the mode to *GPRS*, and click *Apply* (Figure 1-11).



**Figure 1-11. General tab**

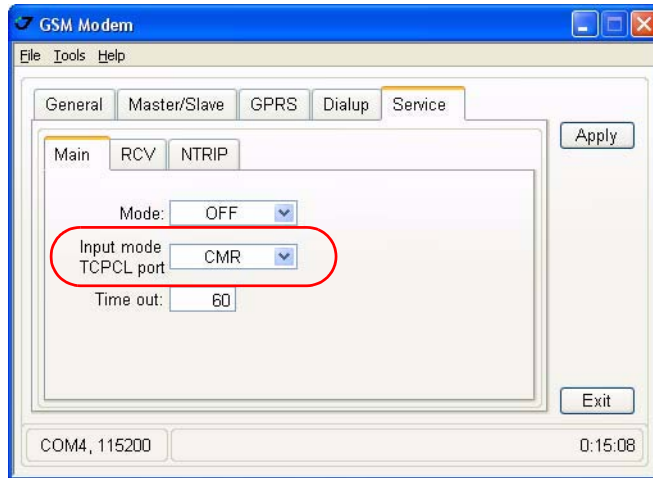
9. Wait until GPRS status will be “connected” (Figure 1-12).



**Figure 1-12. General tab: Status “connected”**

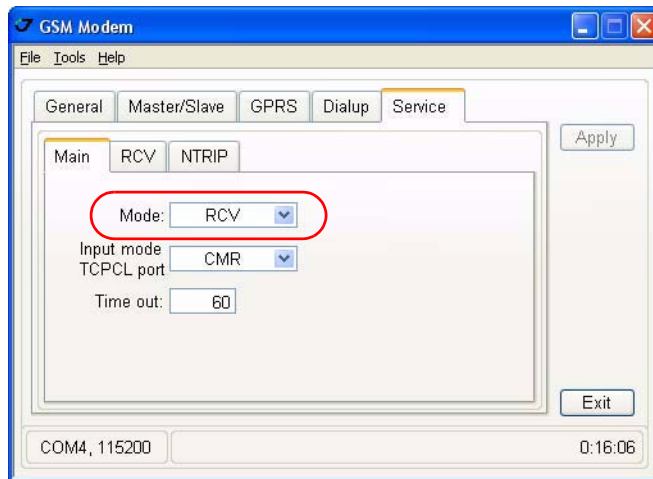


10. In the *Main* subtab in the *Input Mode TCPCL port* drop-down list box select the network correction type (Figure 1-13), then click *Apply*.



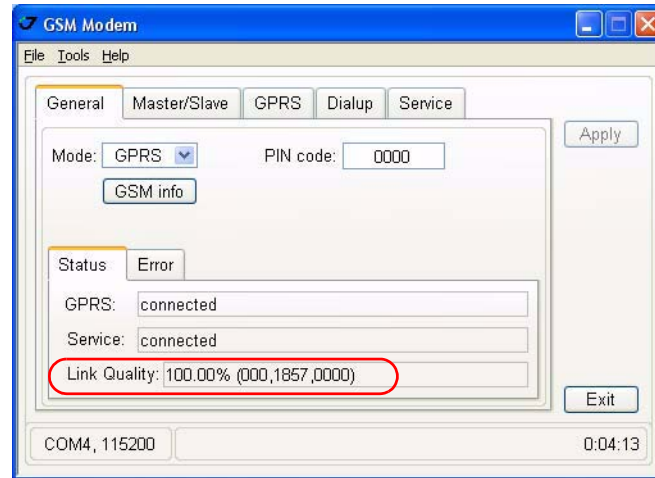
**Figure 1-13. Main subtab**

11. Set the RCV mode in the *Main* window, then click *Apply* (Figure 1-14).



**Figure 1-14. Main subtab. Mode**

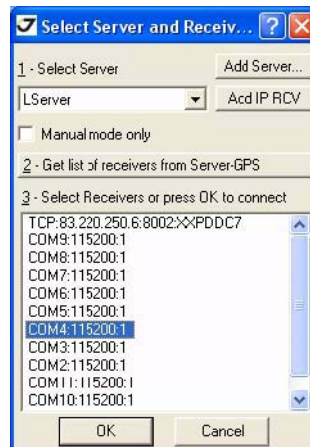
12. When connection with RCV server is established receiver starts receive corrections (Figure 1-15).



**Figure 1-15. Connection established**

13. Quit ModemVU by clicking *Exit* button.

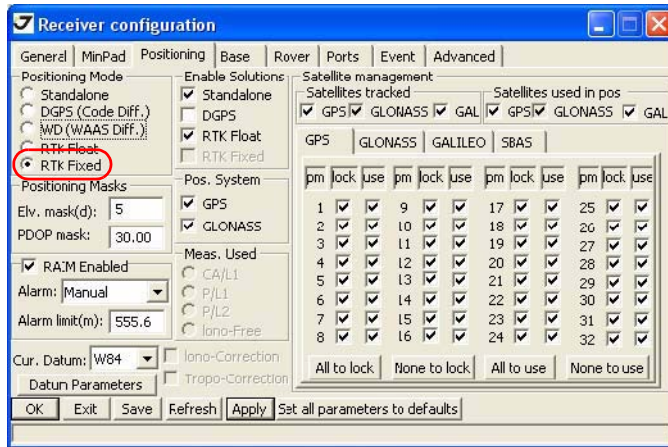
14. Start TriVU. Select port the receiver is connected to and click OK (Figure 1-16).



**Figure 1-16. TriVU. Selecting COM port**

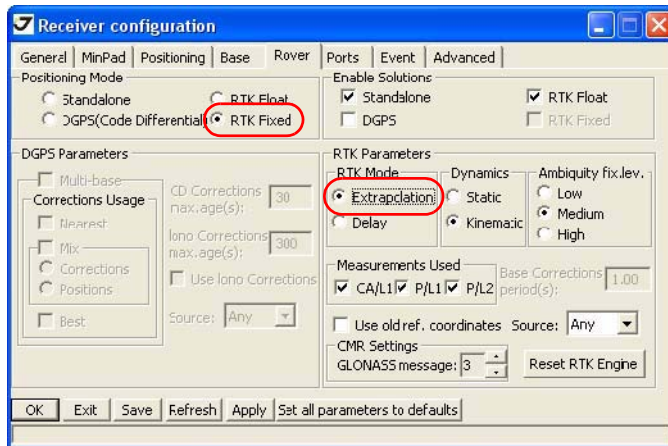
15. Click *Configuration* ▶ *Receiver*.

16. In the *Positioning* tab set the *Positioning Mode* to RTK Fixed, and click *Apply* (Figure 1-17).



**Figure 1-17. Positioning tab**

17. In the *Rover* tab set the *Positioning mode* to RTK Fixed and *RTK mode* to Extrapolation, and click OK (Figure 1-18).



**Figure 1-18. Rover tab**

18. The receiver will obtain the RTK Fixed solution (Figure 1-19).

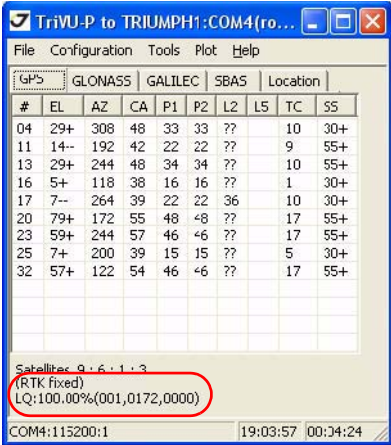


Figure 1-19. TriVU. RTK fixed



1731 Technology Drive, San Jose, CA 95110 USA

Phone: +1(408)573-8100

Fax: +1(408)573-9100

[www.javad.com](http://www.javad.com)

Copyright © JAVAD GNSS, Inc., 2009  
All rights reserved. No unauthorized duplication.