



# **SIM Card Installation**

## **Instructions**

**Version 2.0**

**Last Revised October 18, 2012**

**All contents in this manual are copyrighted by JAVAD GNSS.  
All rights reserved. The information contained herein may not be used, accessed, copied,  
stored, displayed, sold, modified, published, or distributed, or otherwise reproduced without express written  
consent from JAVAD GNSS**



# SIM CARD INSTALLATION INSTRUCTIONS

The SIM card provides communication for data transfer between two GSM-capable receivers. The SIM card can be purchased at your local cellular phone supply store. Once installed, the card generally remains installed.

The SIM card must support Circuit Switched Data to communicate directly between receivers. The SIM card must have GPRS support to communicate with a GPS Network IP address.

**Note:** Both the Base and Rover receivers must have a SIM card installed (supporting Circuit Switched Data) and have subscriptions to the same service provider for proper communication.

Once the receiver is turned on, the receiver board will detect the SIM card and it will be ready to use as needed.

## TRIUMPH-VS Optional SIM Cards Installation

TRIUMPH-VS is equipped with two SIM card slots, to allow using two SIM cards and switching between two different cell providers. The SIM card can be purchased at your local cellular phone supply store.

The SIM card must have GPRS support to provide an Internet connectivity in the field, where WiFi is not available. The SIM card must support Circuit Switched Data to establish the direct communication between GSM-capable receivers.

**Note:** Before SIM card installing in TRIUMPH-VS, it is recommended to remove PIN code using your cell phone.

1. Ensure the receiver is turned off.

## SIM Card Installation Instructions

### TRIUMPH-VS Optional SIM Cards Installation

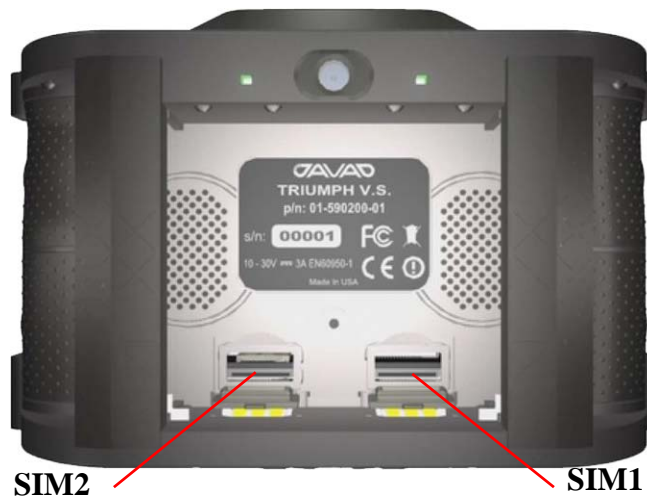
- Using both hands, gently push the battery pack upward, to remove it. Rest your thumbs against the receiver case, with other fingers push the battery up.



**Figure 1. TRIUMPH-VS battery removing**

- Open the SIM1 or SIM2 card cover.

**Note:** If you intend to insert only one SIM card, always insert it to the SIM1 slot.



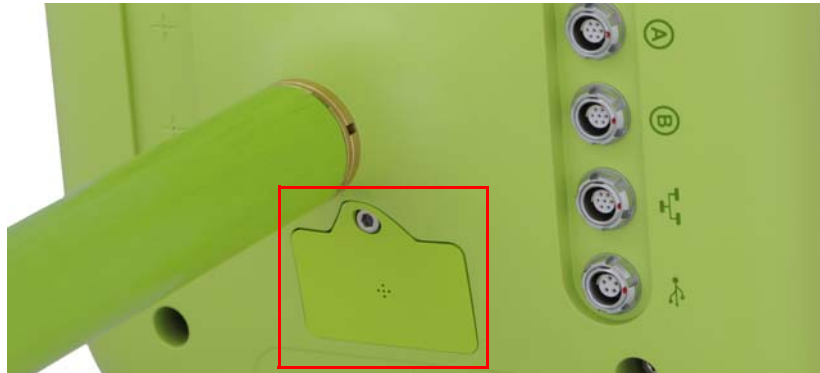
**Figure 2. SIM card slots**

- Gently insert the SIM card contacts facing up into SIM card holder until it clicks.
- Close the cover.
- Place the battery pack back into the receiver, make sure it is firmly established.

# TRIUMPH-1 Optional SIM Cards Installation

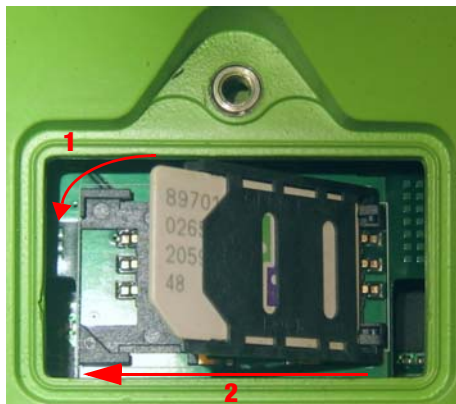
## First SIM Card Installation

1. Ensure the receiver is turned off.
2. Open the small SIM card door.



**Figure 3. TRIUMPH-1 SIM card door**

3. Push SIM card holder to OPEN.
4. Insert SIM card into SIM card holder label side up.
5. Close the holder (Figure 4).

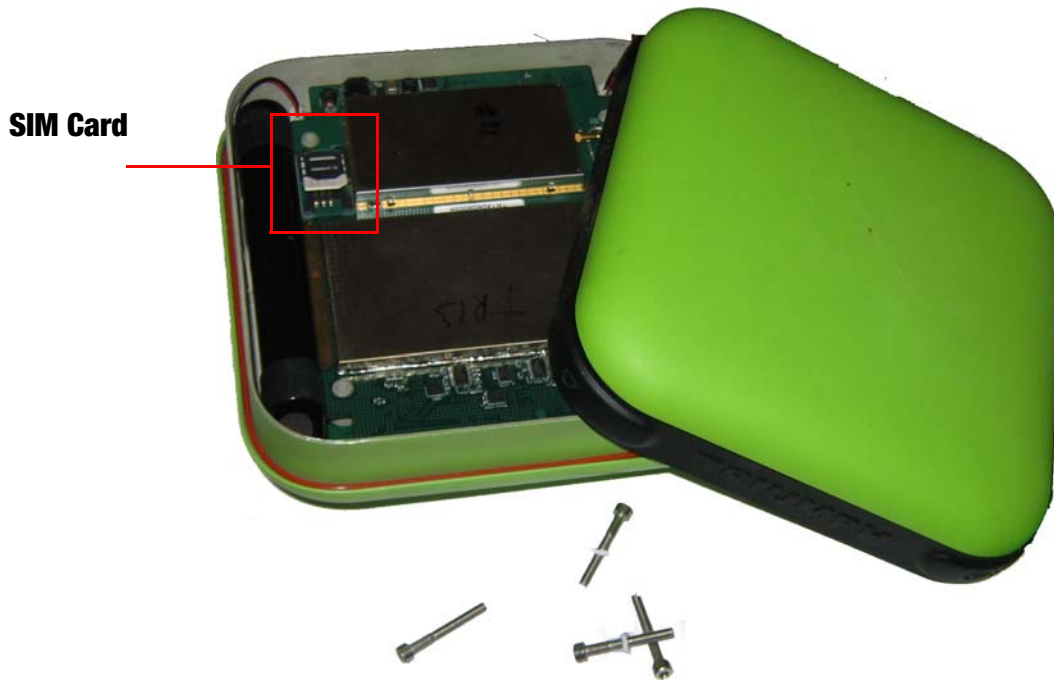


**Figure 4. Installing SIM card**

6. Push the SIM card holder to LOCK to close it tightly (Figure 4).
7. Close the door and tighten screws.

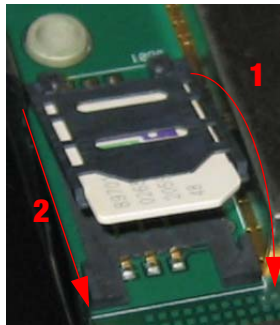
## Second SIM Card Installation

1. Ensure the receiver is turned off.
2. Open the bottom of the case screwing off 4 self tapping screw (Figure 5)



**Figure 5. TRIUMPH-1 SIM Card installation**

3. Push SIM card holder to OPEN.
4. Insert SIM card into SIM card holder, label side up, and close the holder.



**Figure 6. Installing SIM card**

5. Push the SIM card holder to LOCK to close it tightly (Figure 4).
6. Close the case and tighten screws.

## **SIGMA Optional SIM Card Installation**

1. Ensure the receiver is turned off.
2. Open small SIM card door on the back side of the case screwing off 2 self tapping screws.



**Figure 7. SIM Card Installation**

3. Carefully insert the SIM into the SIM card holder, label side down, and push it forward to lock close it tightly.
4. Close the SIM card door.

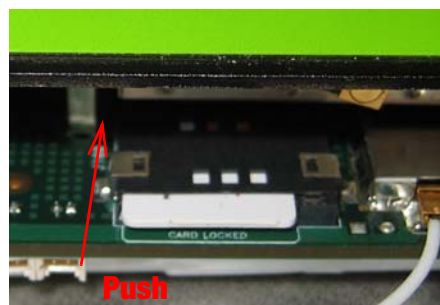
## ALPHA Optional SIM Card Installation

1. Ensure the receiver is turned off.
2. Open the front of the case screwing off 2 self tapping screw (Figure 8)



**Figure 8. SIM Card Installation**

3. Carefully insert the SIM card into the SIM card holder, label side up, and push it forward to lock to close it tightly.



4. Close the case and tighten screws.



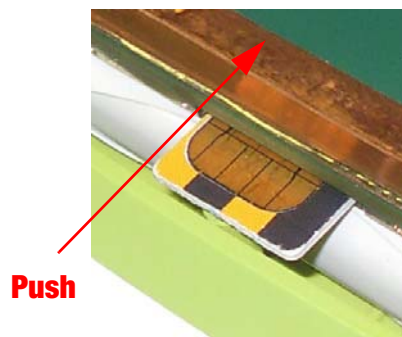
## GISmore SIM Card Installation

1. Ensure the receiver is turned off.
2. Open the bottom of the case screwing off 9 self tapping screw (Figure 9).



**Figure 9. GISmore SIM Card installation**

3. Carefully insert the SIM into the SIM card holder, label side down, and push it to lock to close it tightly.



4. Close the case and carefully tighten the screws.



900 Rock Avenue, San Jose, CA 95131 USA

Phone: +1(408)770-1770

Fax: +1(408)770-1799

[www.javad.com](http://www.javad.com)

Copyright © JAVAD GNSS, Inc., 2012  
All rights reserved. No unauthorized duplication.