



# **NTRIP Client**

## **Configuration Example**

**Version 1.1**

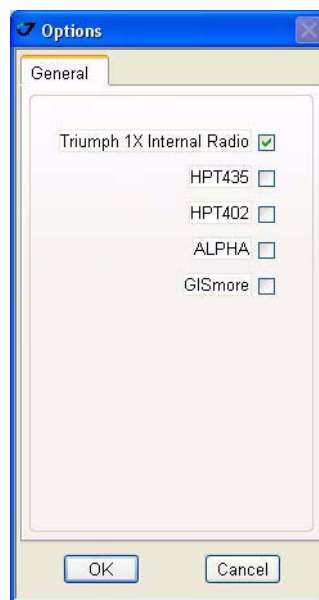
**Last Revised March 19, 2009**

**All contents in this manual are copyrighted by JAVAD GNSS.  
All rights reserved. The information contained herein may not be used, accessed, copied,  
stored, displayed, sold, modified, published, or distributed, or otherwise reproduced without express  
written consent from JAVAD GNSS.**



# NTRIP CLIENT CONFIGURATION EXAMPLE

1. Start ModemVU.
2. Select *Triumph 1X Internal Radio* and click OK (Figure 1-1).



**Figure 1-1. ModemVU. Options window**

3. Select the port receiver is connected to and click *Connect* (Figure 1-2).



**Figure 1-2. ModemVU. Connection**

4. Select the *OFF* mode for GSM, click *Apply*, and then click *Connect GSM* button (Figure 1-3).



**Figure 1-3. ModemVU TRIUMPH Internal Radio selection**

5. In the *GPRS* tab in the *Main* subtab set up GPRS parameters, and click *Apply*:
  - Dial number
  - User name
  - Password
  - Access Point Name
  - PDP context identifier

**Note:** This information as usually is given by cell provider (Figure 1-4).



**Figure 1-4. GPRS example settings for BEELINE**

6. In the *Service* tab in the *Main* subtab set the mode to *OFF*. Click *Apply* (Figure 1-5).

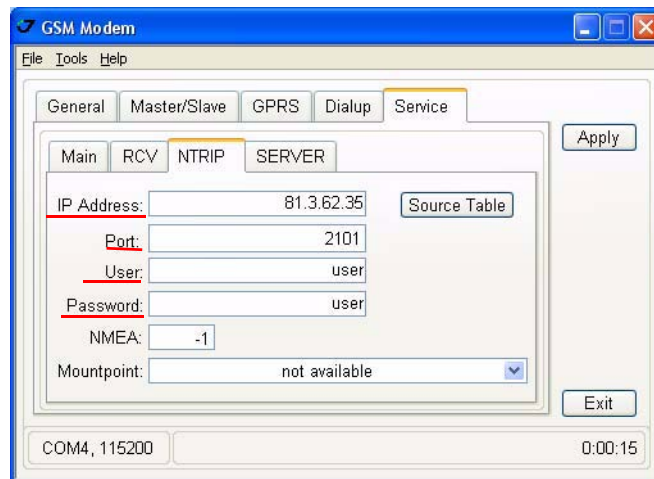


**Figure 1-5. Service tab. Main subtab**

7. In the NTRIP subtab set the NTRIP client parameters, then click *Apply*:

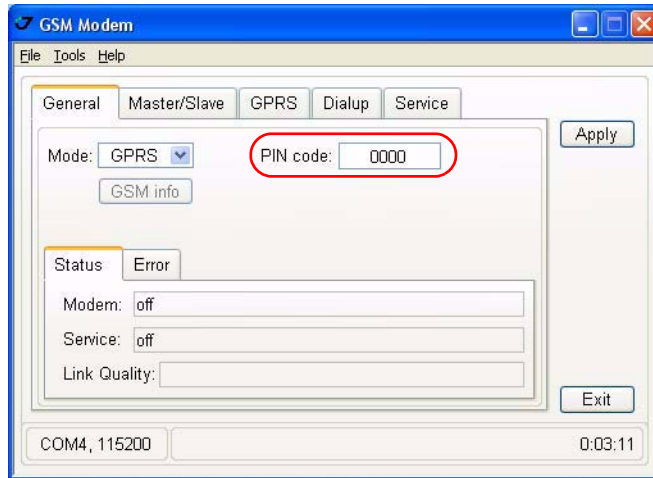
- IP Address
- Port
- User
- Password

**Note:** As usually this information is given by NTRIP Caster (Figure 1-6).



**Figure 1-6. Settings for NTRIP client**

8. In the *General* tab insert your SIM card PIN code (if needed), then set the mode to *GPRS*, and click *Apply* (Figure 1-7).



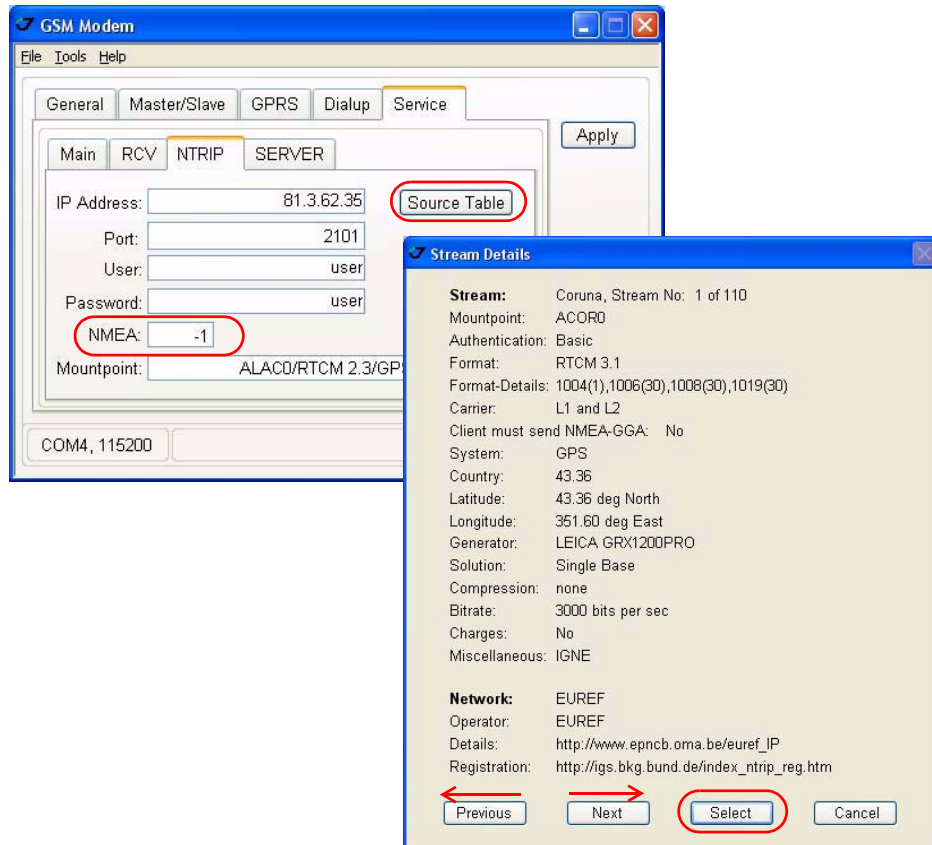
**Figure 1-7. General tab**

9. Wait until GPRS status will be "connected" (Figure 1-8).



**Figure 1-8. General tab: Status "connected"**

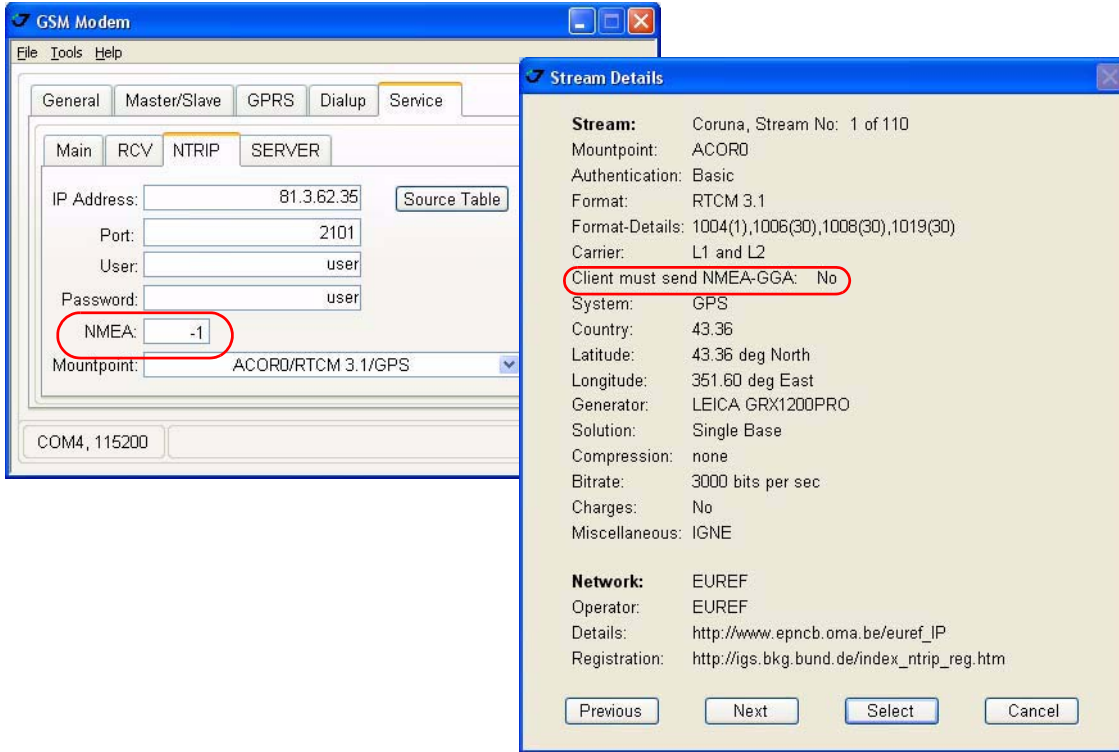
10. In the *Service* tab in the *NTRIP* subtab click the *Source Table* button to select the Mountpoint (Figure 1-9).



**Figure 1-9. NTRIP Subtab. Source Table button and Stream details window**

Please check the NMEA box parameter and set up the parameter according mountpoint information.

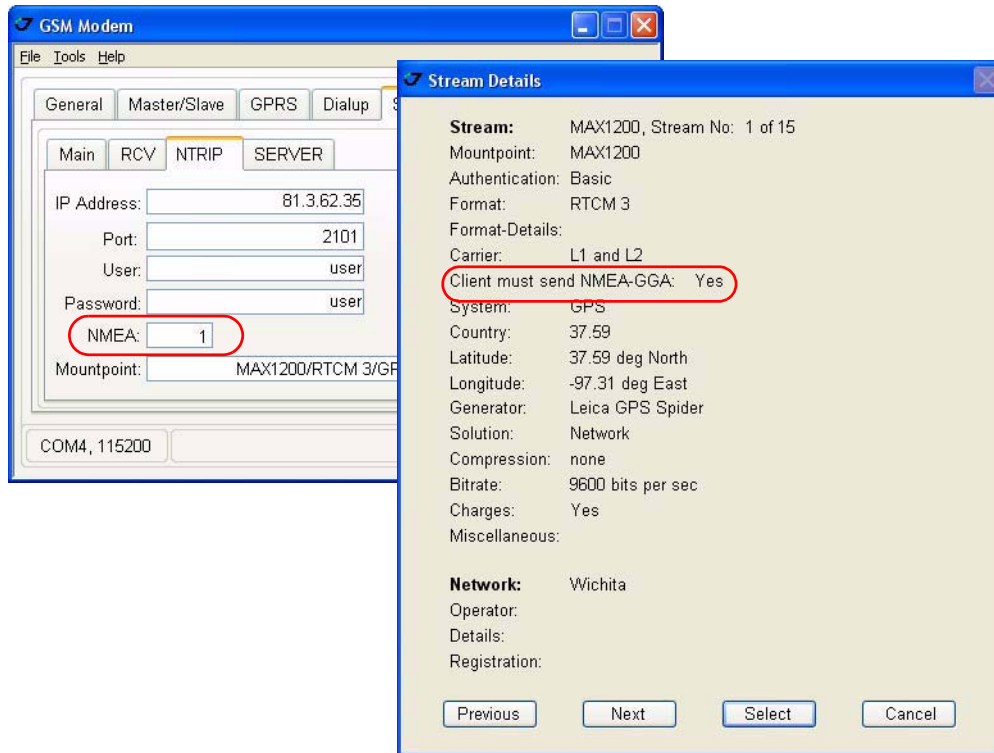
- If the selected mountpoint doesn't expect the NMEA-GGA messages set -1, and receiver will not send NMEA GGA messages to NTRIP caster.



**Figure 1-10. NMEA-GGA Messages 1**



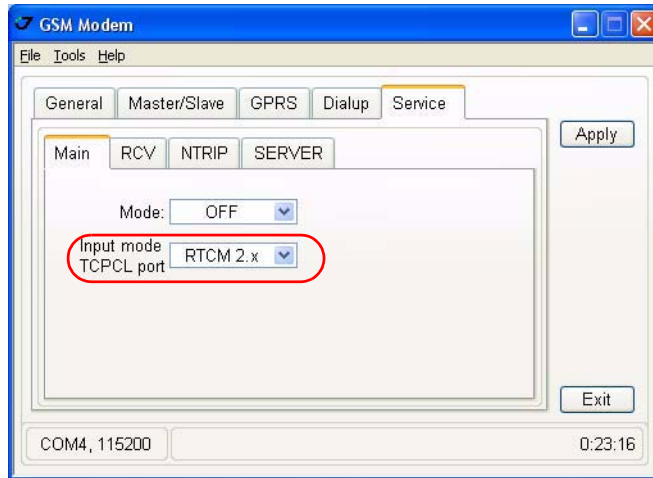
- If the selected mountpoint expects the NMEA-GGA messages, set 1 and receiver will send NMEA GGA messages to the NTRIP caster every second.



**Figure 1-11. NMEA-GGA messages 2**

11. After Mountpoint is selected and NMEA parameter set, click *Apply*.

12. In the *Main* subtab in the *Input Mode TCPCL port* drop-down list box select the Mountpoint correction type (Figure 1-12), then click *Apply*.



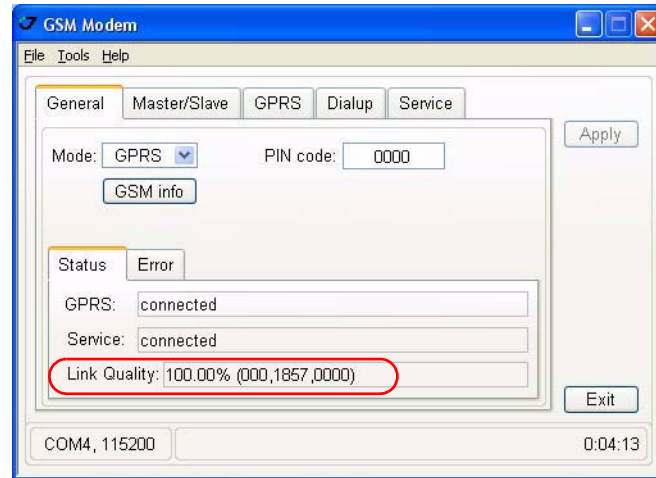
**Figure 1-12. Main subtab. Input mode TCPCL port**

13. Set the NTRIP mode in the *Main* window, then click *Apply* (Figure 1-13).



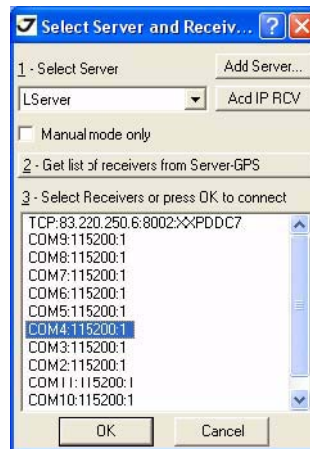
**Figure 1-13. Main subtab. Mode**

14. When connection with NTRIP caster is established receiver starts receive corrections (Figure 1-14).



**Figure 1-14. Connection established**

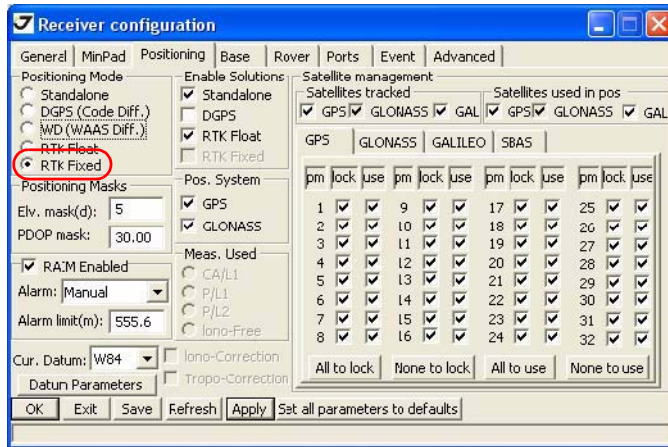
15. Quit ModemVU by clicking *Exit* button.  
 16. Start TriVU. Select port the receiver is connected to and click OK (Figure 1-15).



**Figure 1-15. TriVU. Selecting COM port**

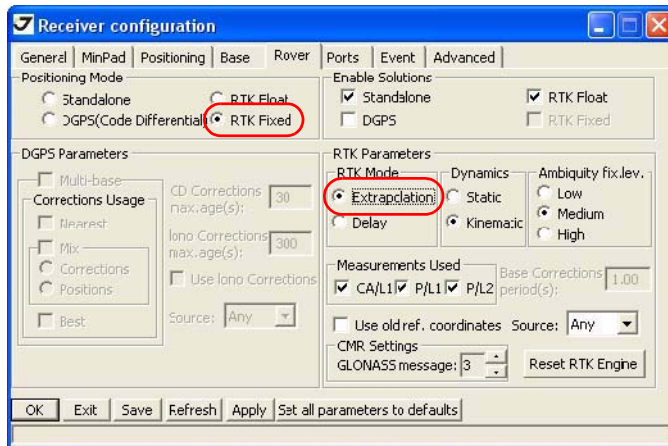
17. Click *Configuration* ▶ *Receiver*.

18. In the *Positioning* tab set the *Positioning Mode* to RTK Fixed, and click *Apply* (Figure 1-16).



**Figure 1-16. Positioning tab**

19. In the *Rover* tab set the *Positioning mode* to RTK Fixed and *RTK mode* to Extrapolation, and click *OK* (Figure 1-17).



**Figure 1-17. Rover tab**

20. The receiver will obtain the RTK Fixed solution (Figure 1-18).

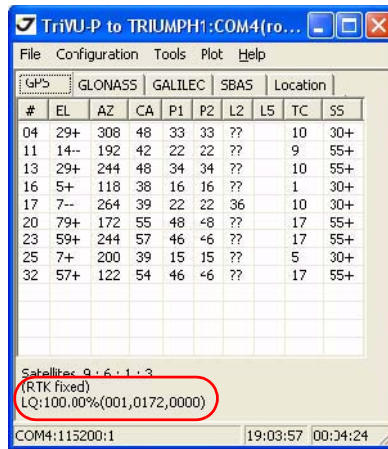


Figure 1-18. TriVU. RTK fixed



1731 Technology Drive, San Jose, CA 95110 USA

Phone: +1(408)573-8100

Fax: +1(408)573-9100

[www.javad.com](http://www.javad.com)

Copyright © JAVAD GNSS, Inc., 2009  
All rights reserved. No unauthorized duplication.