



# **NTRIP Caster using NetHub**

## **Configuration Example**

**Version 1.0**

**Software version 4.6.4.7**

**Last Revised March 21, 2014**

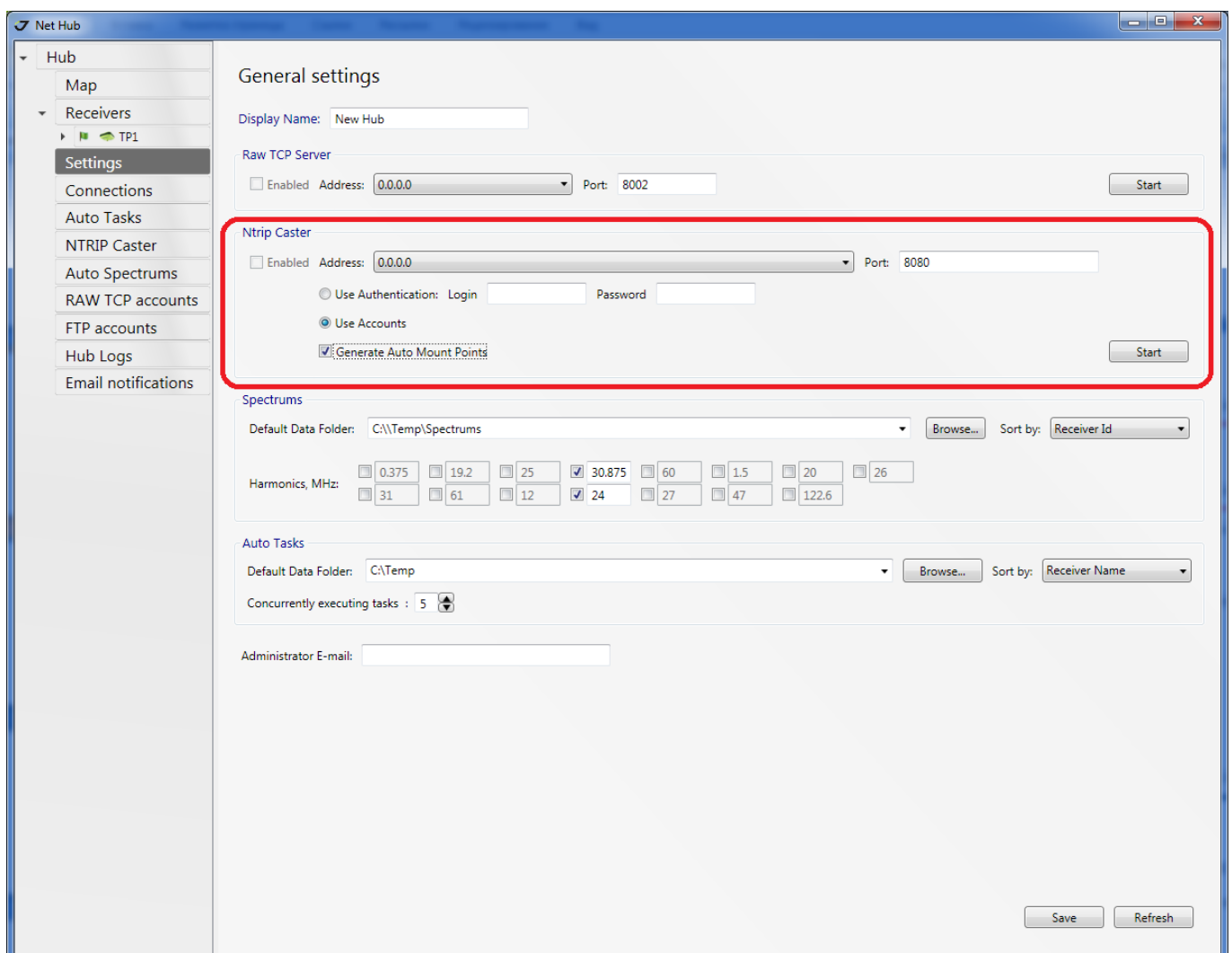
**All contents in this manual are copyrighted by JAVAD GNSS.  
All rights reserved. The information contained herein may not be used, accessed, copied,  
stored, displayed, sold, modified, published, or distributed, or otherwise reproduced without express written  
consent from JAVAD GNSS**



# NTRIP CASTER USING NETHUB

## 1. Configure NTRIP Caster

1. Go to the tab *Settings*.



**Figure 1. Settings. NTRIP Caster**

2. Enable Ntrip Caster, specify IP-address, port and authentication scheme for incoming Ntrip-connections.

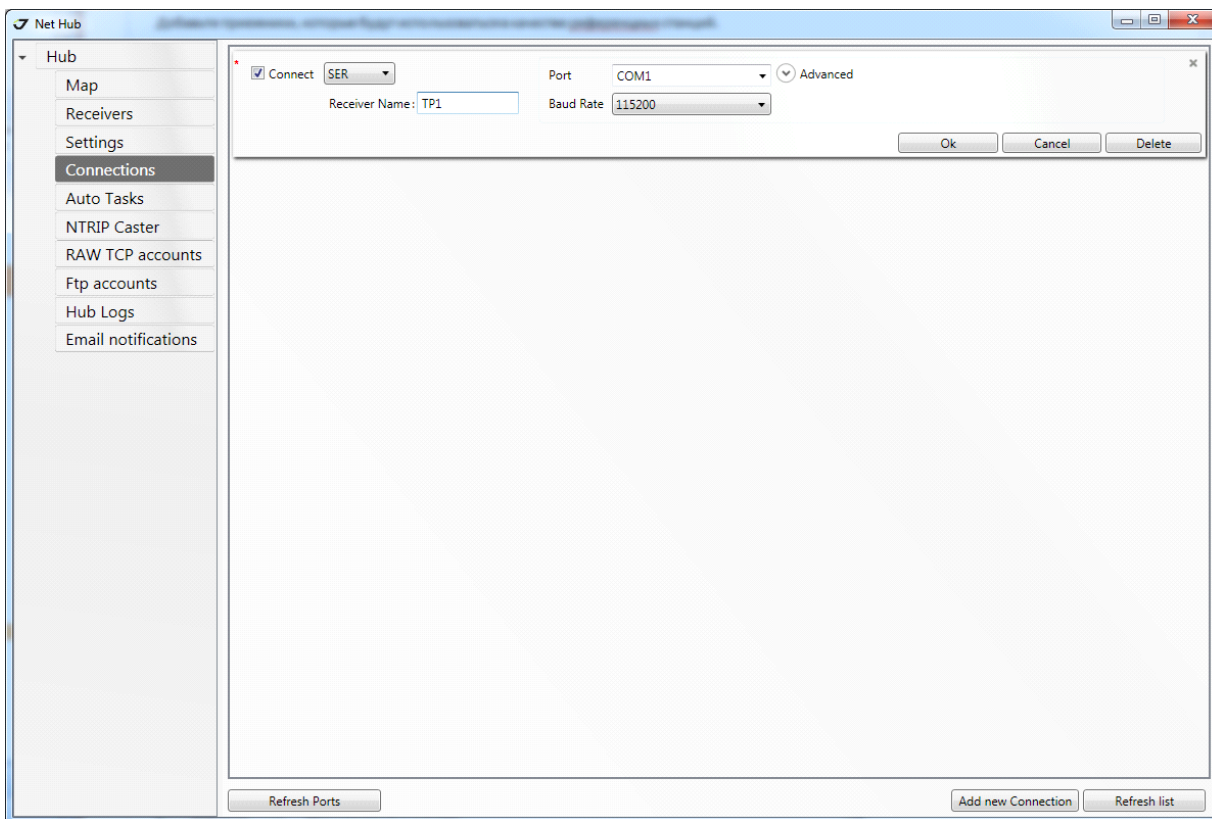
## NTRIP Caster using NetHub

Add bases.

3. Specify *Login* and *Password* for *Use authentication* scheme. This scheme allows any logged users get corrections without restrictions.
4. You have to enable authentication scheme *Use Accounts* to control client access rights to Ntrip Caster specified by required options.
5. *Select Generate Auto Mount Points*, to switch rovers to the nearest station.
6. Click *Start*.

## 2. Add bases.

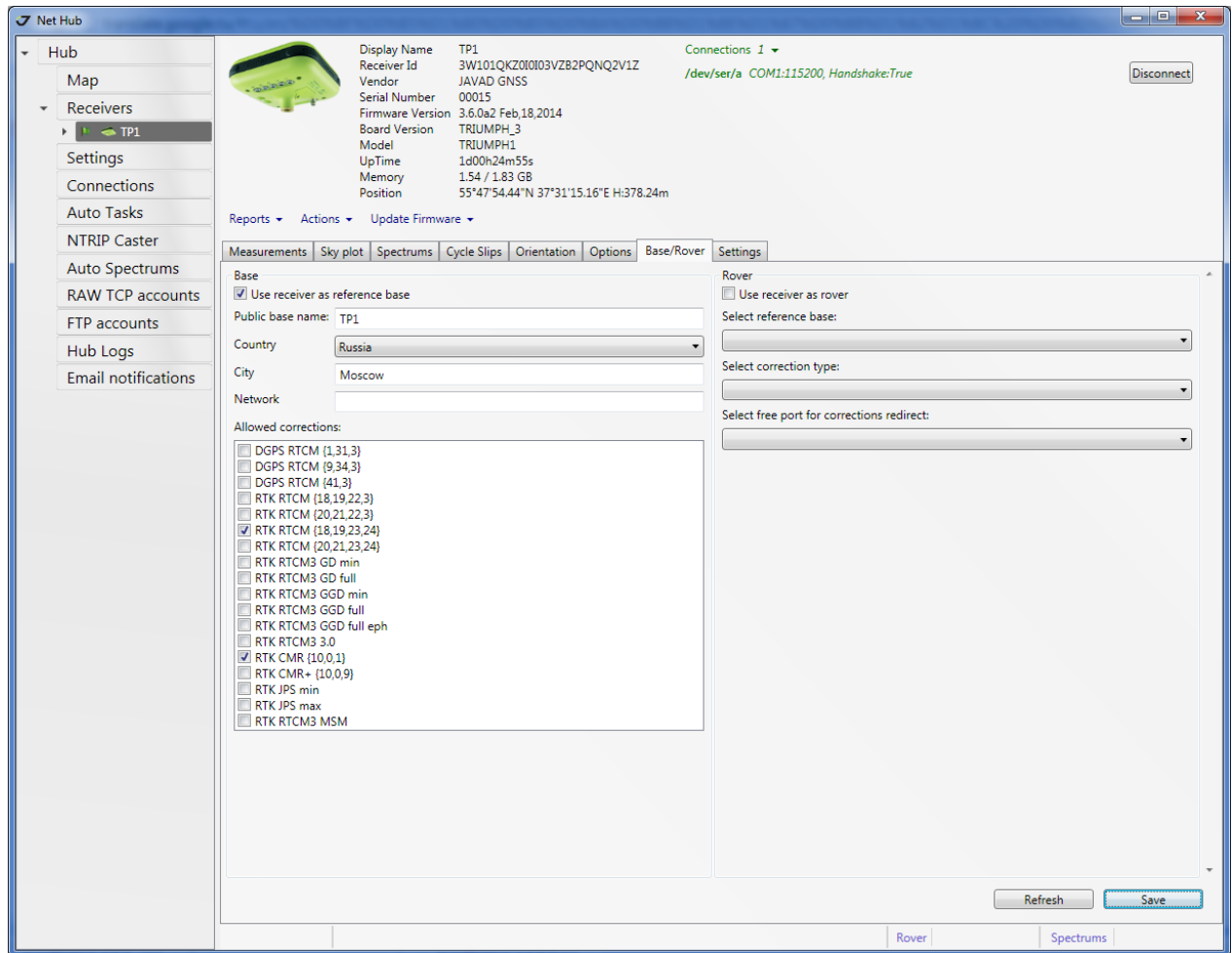
1. Add connection settings for the receivers which are used as bases.



**Figure 2. Connections. Connection settings.**

Connected receiver will appear on the left.

2. Configure Mount Points. To do this, go to the tab *Base/Rover*. Specify name, country and city for the base. Select the corrections from the list.



**Figure 3. Mount Points settings**

Mount Point name is formed as follows: Public base name + "\_" + correction number (in the list).

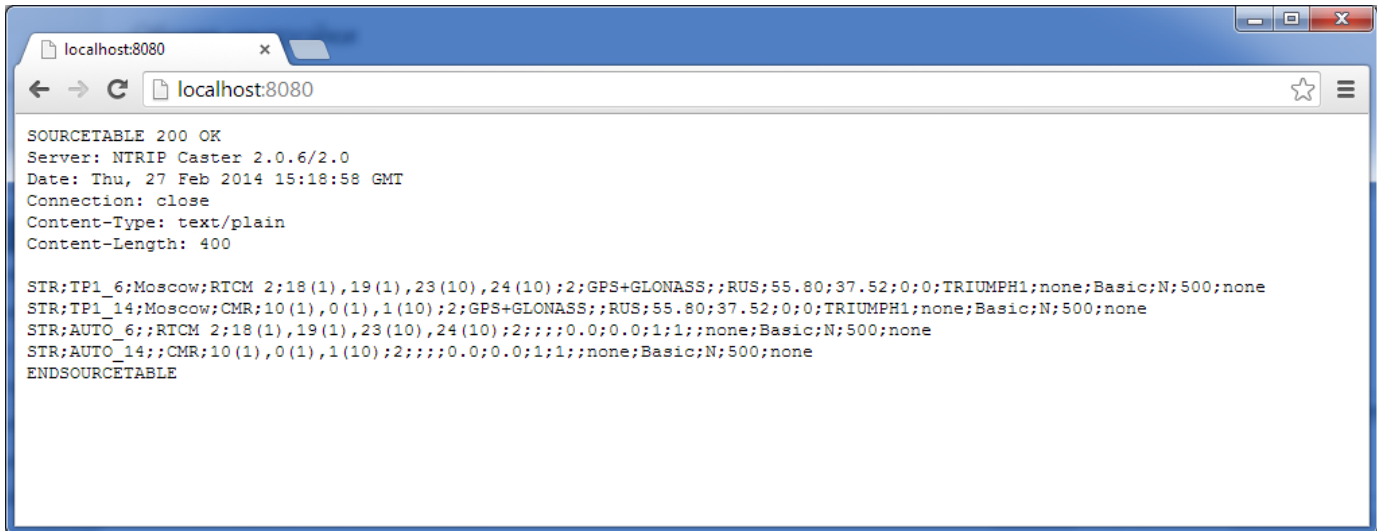
Name	Messages IDs	Mount Point Name
DGPS RTCM {1,31,3}	1, 31, 3(10)	..._1
DGPS RTCM {41,3}	9, 34, 3(10)	..._2
DGPS RTCM {9,34,3}	41, 3(10)	..._3
RTK RTCM {18,19,22,3}	18, 19, 22(10), 3(10)	..._4
RTK RTCM {20,21,22,3}	20, 21, 22(10), 3(10)	..._5
RTK RTCM {18,19,23,24}	18, 19, 23(10), 24(10)	..._6
RTK RTCM {20,21,23,24}	20, 21, 23(10), 24(10)	..._7

## NTRIP Caster using NetHub

Add bases.

RTK RTCM3 GD min	1006(10), 1008(10), 1033(10), 1003	..._8
RTK RTCM3 GD full	1006(10), 1008(10), 1033(10), 1004	..._9
RTK RTCM3 GGD min	1006(10), 1008(10), 1033(10), 1003, 1011	..._10
RTK RTCM3 GGD full	1006(10), 1008(10), 1033(10), 1004, 1012	..._11
RTK RTCM3 GGD full eph	1006(10), 1008(10), 1033(10), 1004, 1012, 1019, 1020	..._12
RTK RTCM3 3.0	1003 , 1011, 1005 (10), 1007 (10), 1033 (10)	..._13
RTK CMR {10,0,1}	10, 0, 1(10)	..._14
RTK CMR+ {10,0,9}	10, 0, 9(10)	..._15
RTK JPS min	RT, GT, NT, SI, rc, cp, 2r, 2p, BI, ET	..._16
RTK JPS max	RT, GT, NT, SI, rc, cp, DC, EC, 2r, 2p, D2, E2, BI, ET	..._17
RTK RTCM3 MSM	1006(10), 1008(10), 1074, 1084, 1094, 1104, 1114, 1124	..._18

Source table to all available Mount Points can be received via any tcp-client, for example internet-browser.



```
SOURCETABLE 200 OK
Server: NTRIP Caster 2.0.6/2.0
Date: Thu, 27 Feb 2014 15:18:58 GMT
Connection: close
Content-Type: text/plain
Content-Length: 400

STR;TP1_6;Moscow;RTCM 2;18(1),19(1),23(10),24(10);2;GPS+GLONASS;;RUS;55.80;37.52;0;0;TRIUMPH1;none;Basic;N;500;none
STR;TP1_14;Moscow;CMR;10(1),0(1),1(10);2;GPS+GLONASS;;RUS;55.80;37.52;0;0;TRIUMPH1;none;Basic;N;500;none
STR;AUTO_6;;RTCM 2;18(1),19(1),23(10),24(10);2;;;0.0;0.0;1;1;;none;Basic;N;500;none
STR;AUTO_14;;CMR;10(1),0(1),1(10);2;;;0.0;0.0;1;1;;none;Basic;N;500;none
ENDSOURCETABLE
```

**Figure 4. Chrome. Ntrip Source Table.**

There are two Mount Points TP1\_6 and TP1\_14 here.

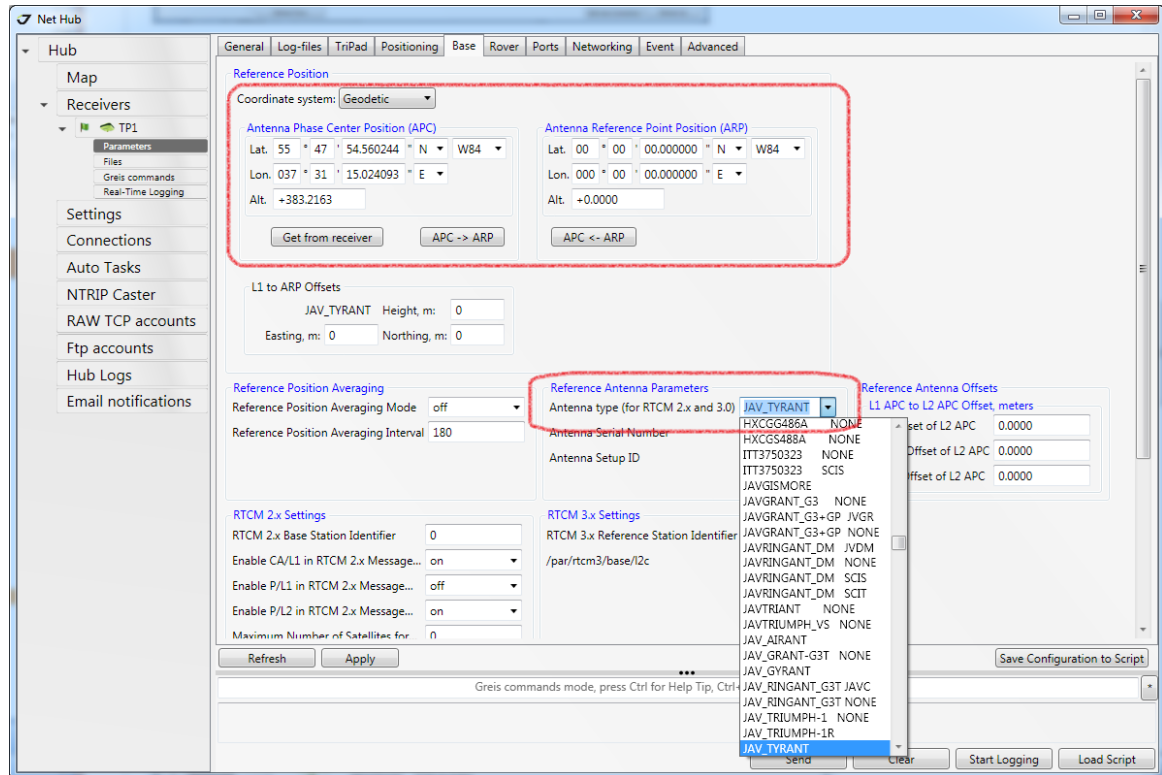
Additional Auto Mount Point is created for each correction type. It is called

Public base name + "\_" + correction number (in the list). Client, which connects to

Auto Mount point will switch to the nearest appropriate.

3. In order the base will be able to transmit the corrections, the correct antenna parameters and the exact coordinates of base should be entered.

Go to *Receivers* ▶ *Receiver (TP1)* ▶ *Parameters* ▶ *Base*.



**Figure 5. Base parameters. Exact coordinates and antenna type.**

Coordinates can be entered manually or got from the receiver.

Select the antenna type in the *Reference Antenna parameters* group.

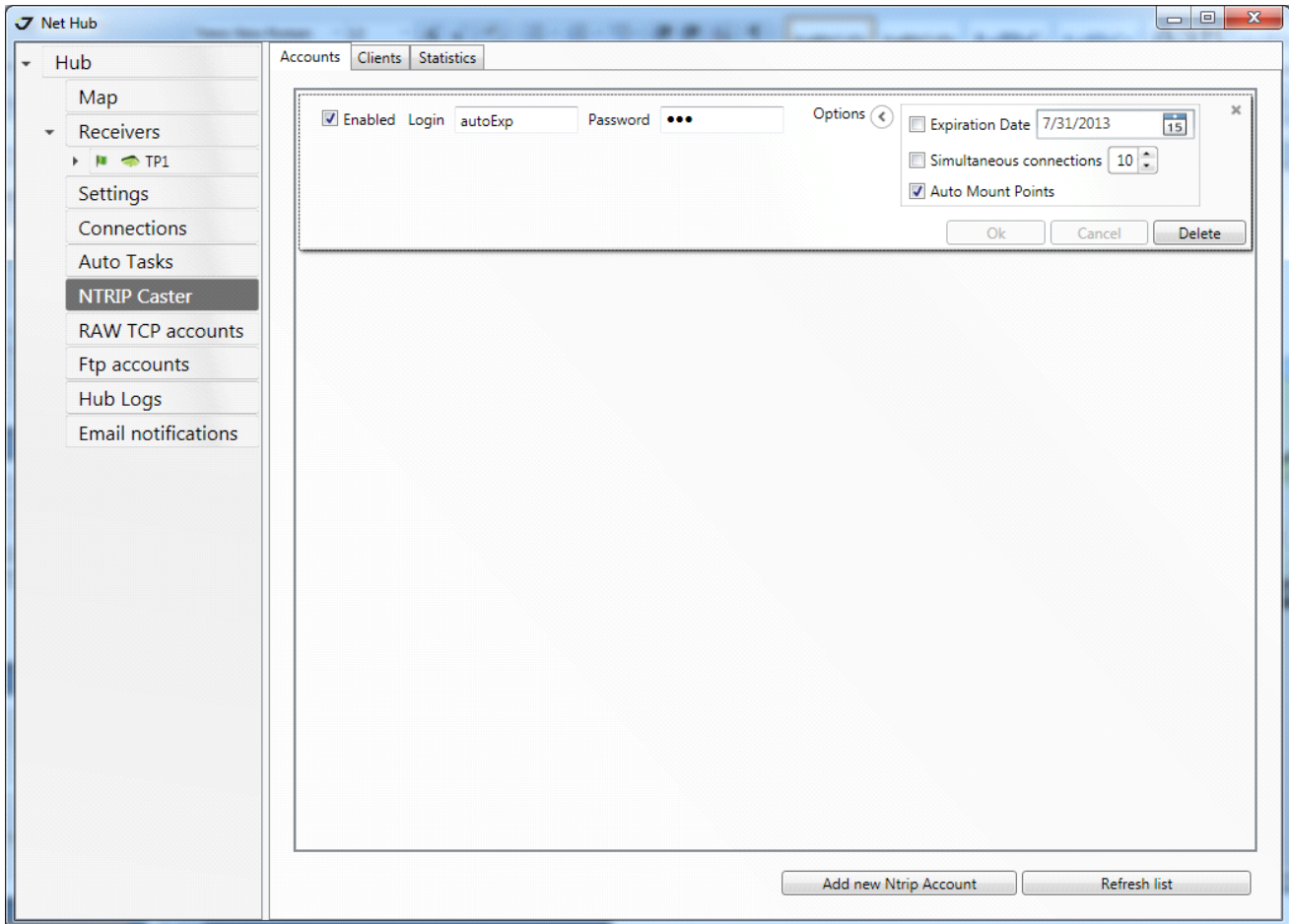
### **3. NTRIP-clients managing. NTRIP accounts.**

1. Go to the tab *Ntrip Caster* ▶ *Accounts*. Add account.

## NTRIP Caster using NetHub

NTRIP-clients managing. NTRIP accounts.

### 2. Enable account. Specify *Login* and *Password*.



**Figure 6. Ntrip Caster. Accounts.**

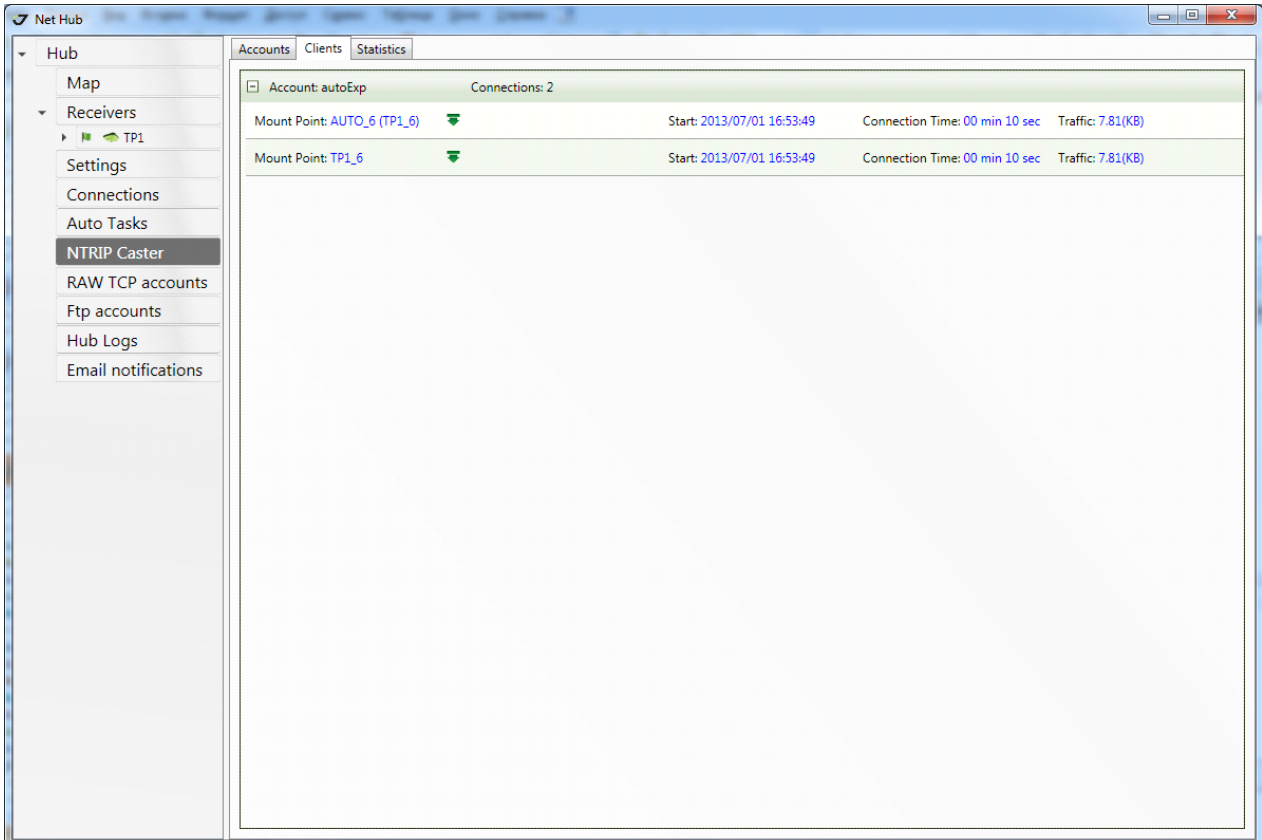
### 3. Add options. Following options are available:

- Expiration Date.
- Connection Count.
- Auto Mount Point.



## 4. Monitoring and statistics

1. You can monitor connected clients on the *Ntrip Caster* ▶ *Clients* tab.



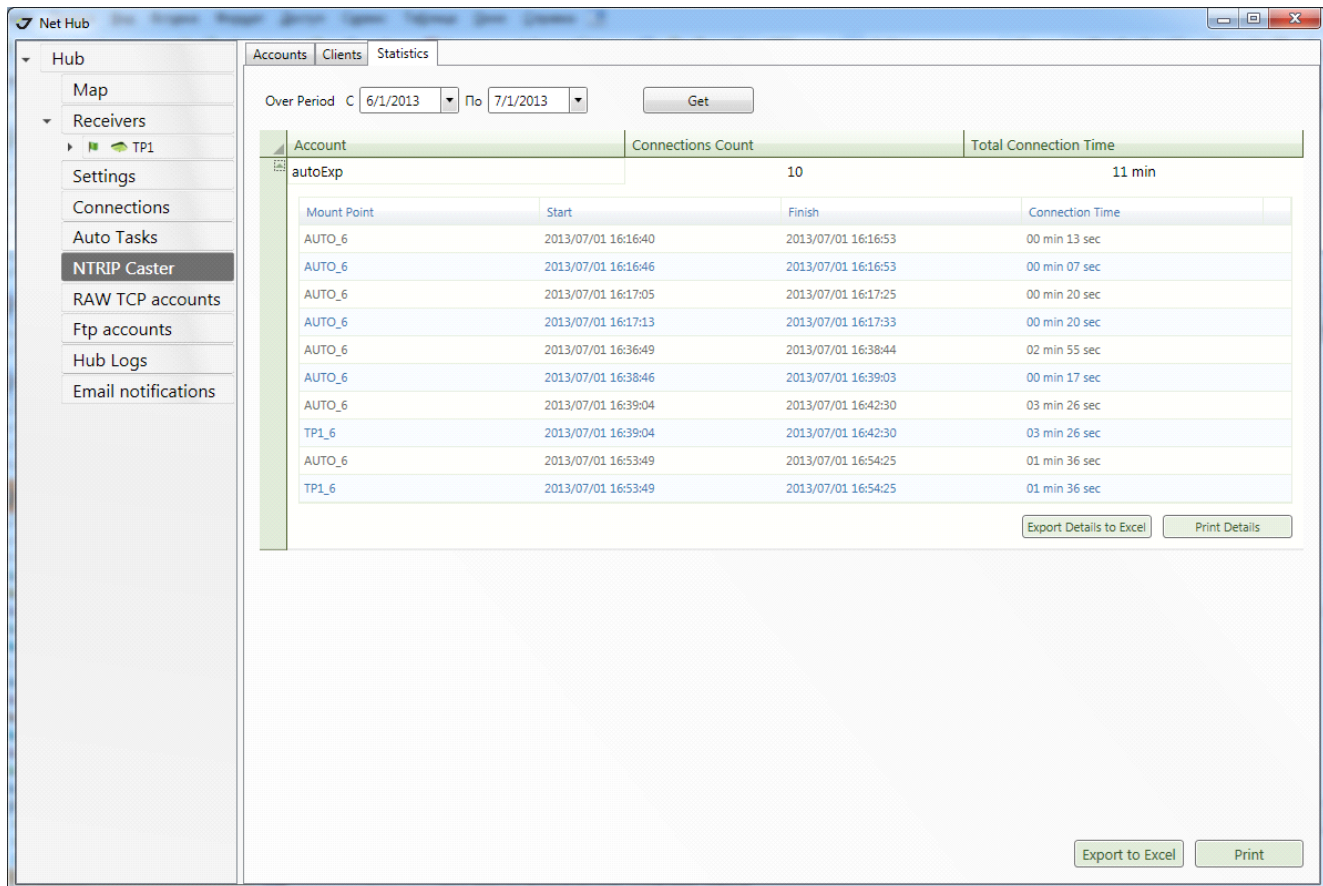
**Figure 7. Ntrip Caster. Clients.**

The table shows the clients currently connected to the Ntrip Caster. Clients are grouped into account. The following information is provided for each client:

- Mount Point
  - Connection start time
  - Connection duration
  - Traffic
2. Statistics is available on the *Ntrip Caster* ▶ *Statistics* tab. Select time period and click *Get*.

## NTRIP Caster using NetHub

### Monitoring and statistics



**Figure 8. Ntrip Caster. Statistics**

The table contains one row for each account, and includes the following information:

- Connection count
  - The total time of all connections in minutes
3. Detailed statistics is available for each account. It shows a list of all the connections for the period. There is the following information for each connection:
- Mount point
  - Connection start time
  - Connection finish time
  - Connection duration

Both general and detailed statistics can be printed and exported to a spreadsheet Excel.





900 Rock Avenue, San Jose, CA 95131 USA

Phone: +1(408)770-1770

Fax: +1(408)770-1799

[www.javad.com](http://www.javad.com)

Copyright © JAVAD GNSS, Inc., 2014  
All rights reserved. No unauthorized duplication.