



900 Rock Avenue, San Jose, CA 95131, USA

How to

# **Setup HPT435BT JL to provide RTK data received via NTRIP Client to UHF**

Version 1.0

Last revised March 31, 2020

All contents in this manual are copyrighted by JAVAD GNSS.  
All rights reserved. The information contained herein may not be used, accessed, copied, stored,  
displayed, sold, modified, published, or distributed, or otherwise reproduced without express  
written consent from JAVAD GNSS.

# Setup HPT435BT JL to provide RTK data received via NTRIP Client to UHF

This document describes how to configure HPT435BT JL to provide the RTK data received via NTRIP Client to UHF.

The following are the steps of configuration of HPT435BT JL:

1. Connect to HPT435BT JL via web interface (see “HPT435BT JL User Manual” for the details).
2. Perform the Cellular (GSM ) configuration:
  - In the Communication/GSM tab set the PIN code and APN parameters if necessary (Figure 1).



Figure 2. HPT435BT JL micro SIM card installation

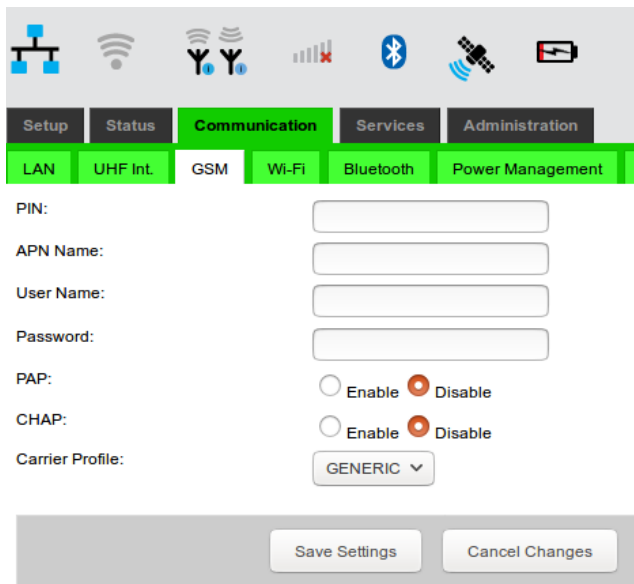


Figure 1. HPT435BT JL GSM configuration tab

- Use tweezers to install or remove the micro SIM card. Insert the SIM card to its slot. The first slot from the green top cover is for micro-SIM; the second slot is for micro-SD (Figure 2).

- In the Communication/Power Management tab activate the GSM interface (Figure 3). And wait for registering in the network and Internet access availability .

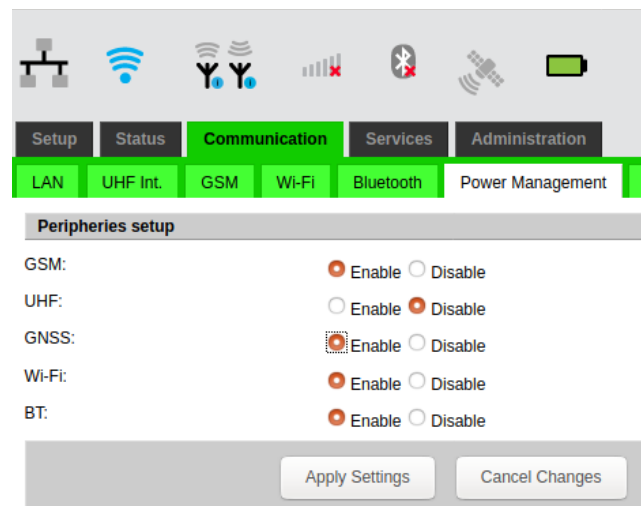


Figure 3. HPT435BT JL Power Management tab

- The detailed connection status you can check in the Status/GSM tab (see Figure 4).

It is possible also to connect HPT435BT JL to the Internet via LAN or Wi-Fi using any Wi-Fi router, MiFi device or even smart-phone configured in hot spot mode.

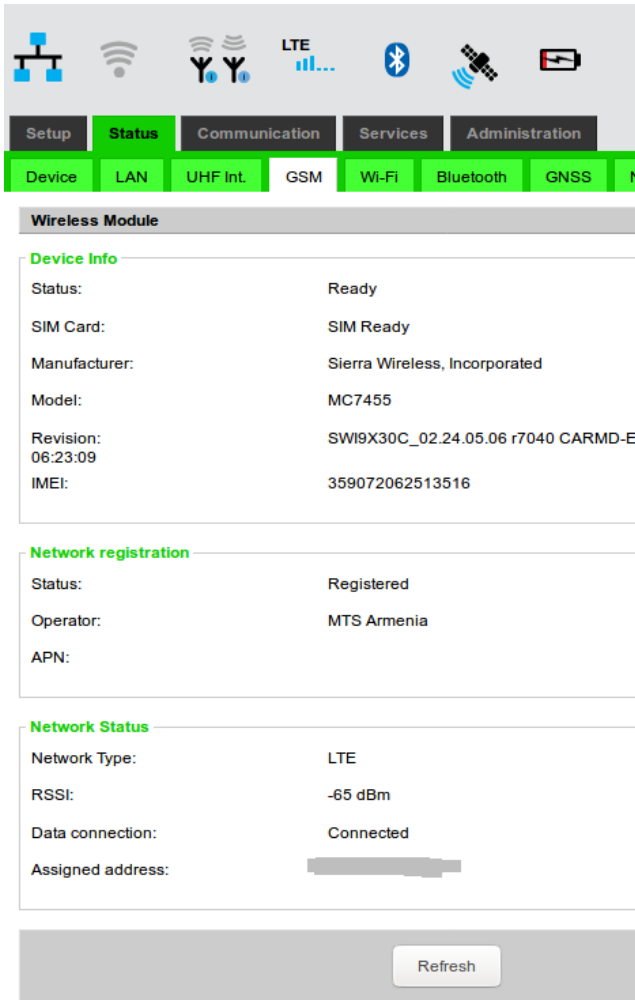


Figure 4. HPT435BT JL GSM Status tab

### 3. Setup UHF

- In the Communication/UHF Int. tab select Modem parameters (Figure 5).

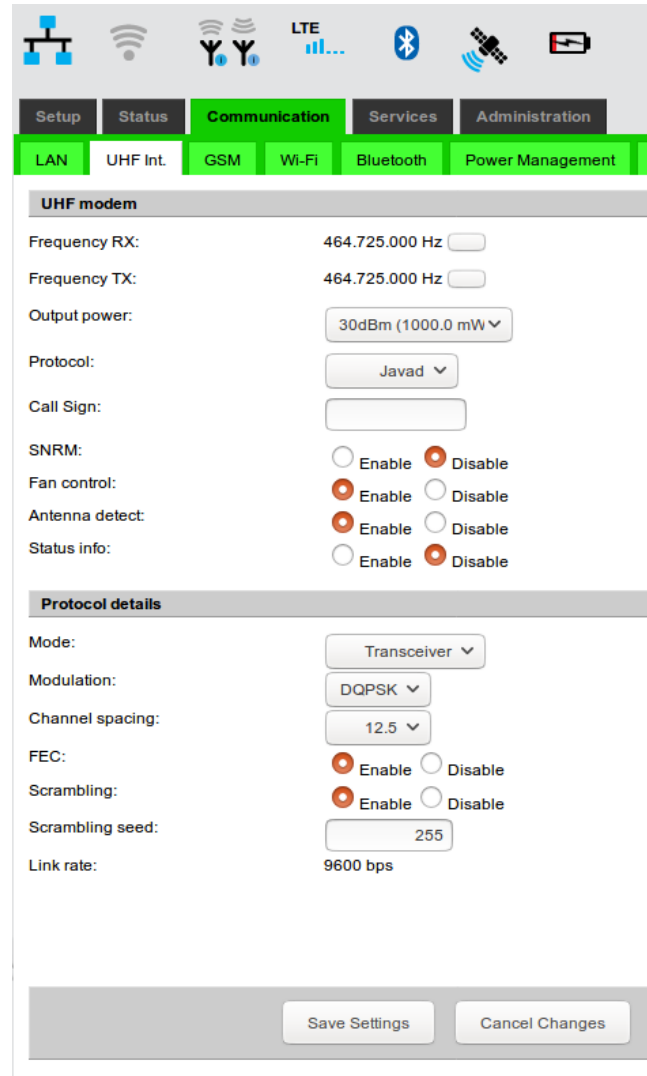


Figure 5. HPT435BT JL UHF Int. tab

- In the Communication/Power Management tab activate the UHF interface (see Figure 3 on page 2).
4. Setup Data Router
    - In the Setup/Router tab select following parameters “NTRIP Client” as Source and “UHF” as Destination.
    - Click “Save Setting” and wait until finish (Figure 6).

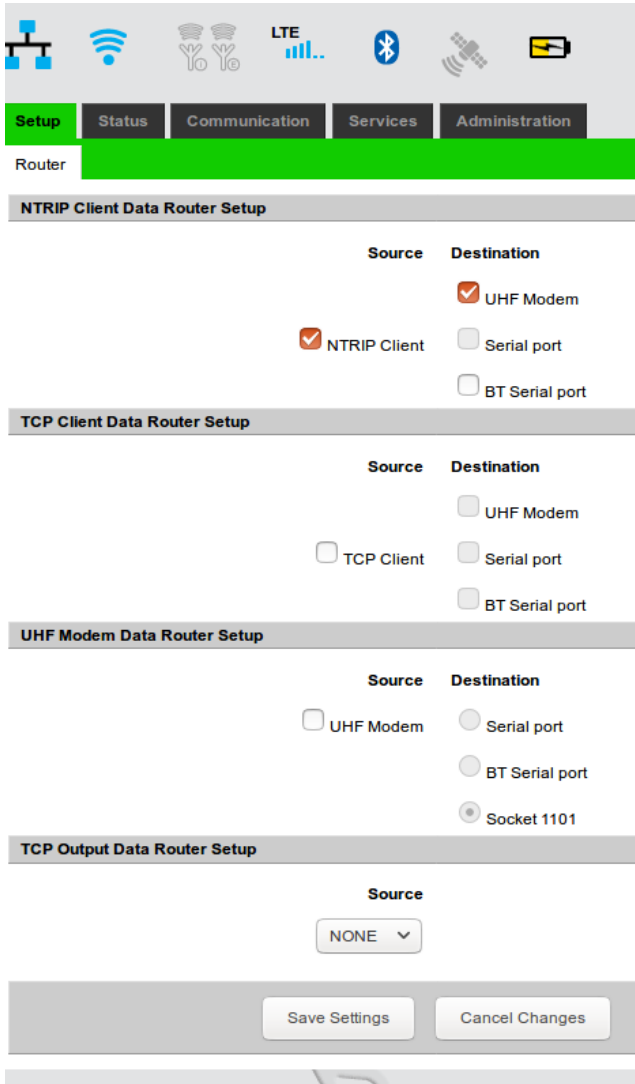


Figure 6. HPT435BT JL NTRIP Data Router tab

5. Setup NTRIP Client

- In the Services/NTRIP tab set the following parameters: “Server name/address”, “Port”, “User”, “Password”.
- Click “Save Setting” and wait until finish.
- Click “Update” and select “Mountpoint” .
- Click “Save Setting” and wait until finish (Figure 7).

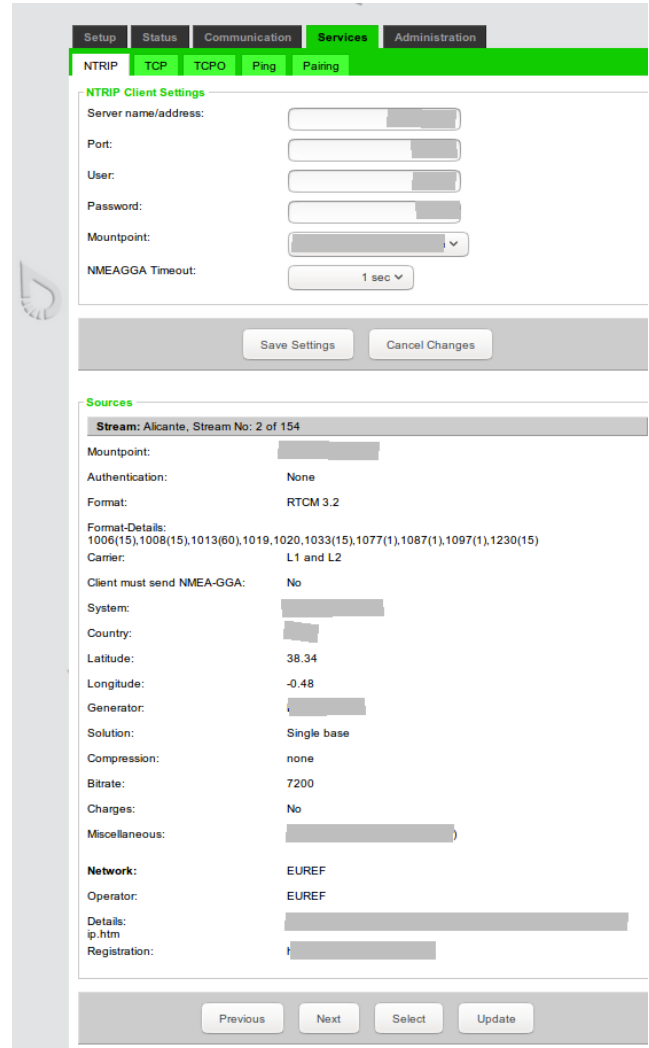


Figure 7. HPT435BT JL NTRIP configuration tab

- If the Ntrip caster needs NMEA-GGA which you can see in picture 8 (field Client must send NMEA-GGA is “Yes”), needed activate GNSS from the Communication/Power Management tab.
- Detailed connection status you can check in the Status/NTRIP tab (Figure 8).

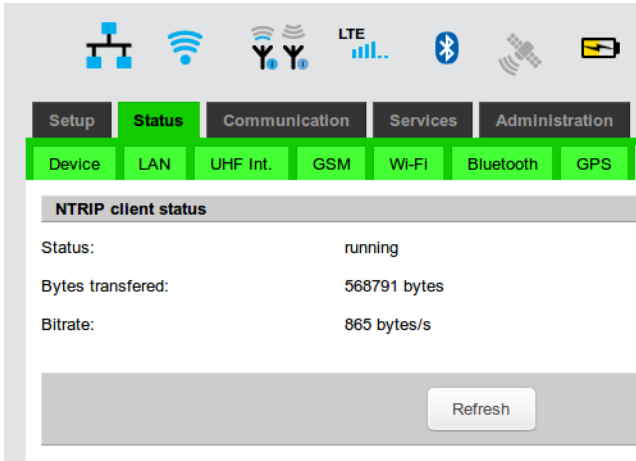


Figure 8. HPT435BT JL Status NTRIP tab



900 Rock Avenue, San Jose,  
CA 95131, USA

Phone: +1(408)770-1770  
Fax : +1(408)770-1799

[www.javad.com](http://www.javad.com)

All rights reserved © JAVAD GNSS, Inc., 2020