



How to configure receiver Output using NetView & Modem

Version 1.0

Last Revised January 10, 2018

**All contents in this manual are copyrighted by JAVAD GNSS.
All rights reserved. The information contained herein may not be used, accessed, copied,
stored, displayed, sold, modified, published, or distributed, or otherwise reproduced without express
written consent from JAVAD GNSS.**

© JAVAD GNSS Inc., 2018

www.javad.com

Configuring receiver Output using NetView& Modem

1. Connect to the receiver.

Fill your actual network connection parameters or select an available serial/usb interface and click *Connect*.

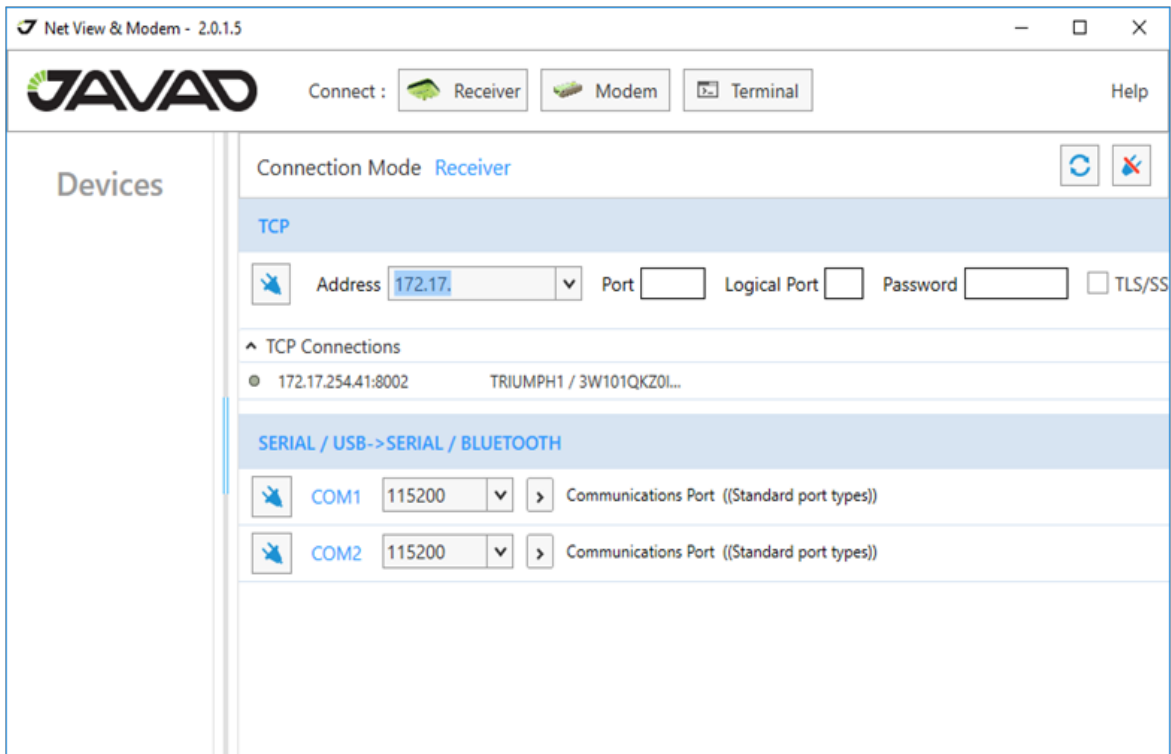


Figure 1. Connect to the receiver

Connected receiver window will appear.

2. Select Output tile

It contains *Ports* and *Message Sets*.

Ports tab

The *Ports* tab provides information about current output on the all available ports. It allows enabling and disabling output on the selected port or all ports.

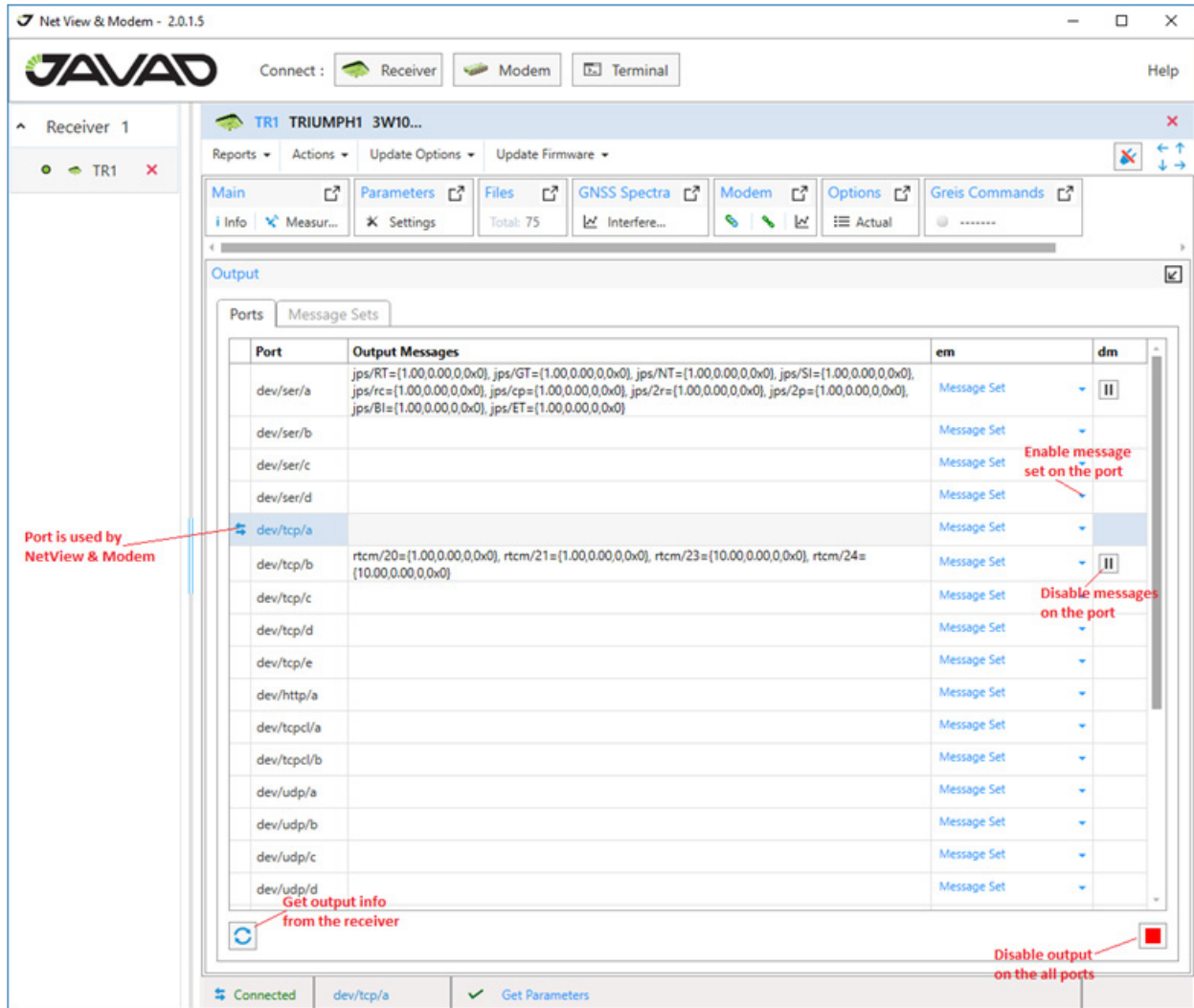


Figure 2. Output Ports tab

Receiving actual output info

Click *Refresh* to get actual info about output from the receiver.

Disabling output

Click *Disable* to stop output on the selected port and confirm your action.

Click *Disable All* to stop output on all the ports and confirm your action.

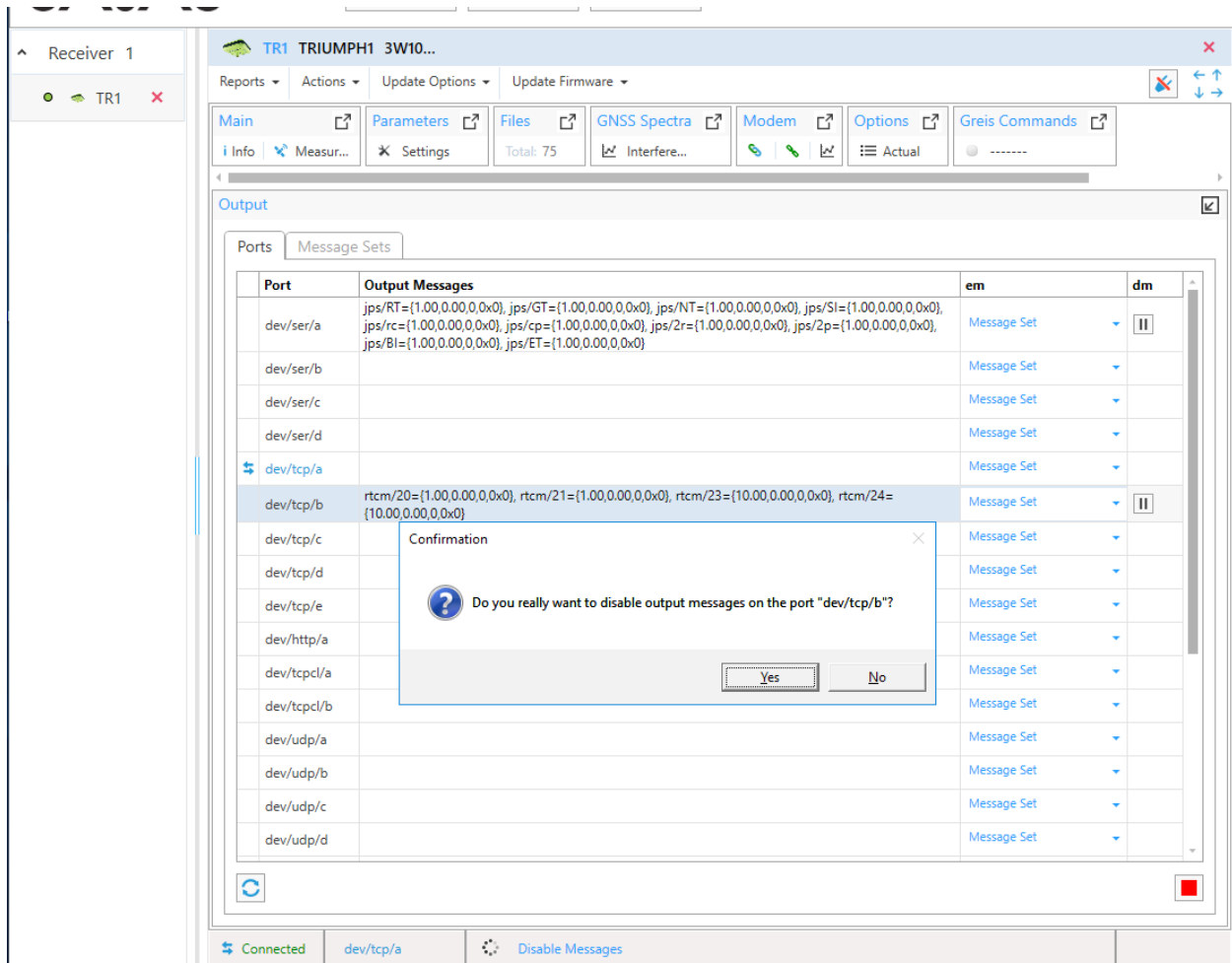


Figure 3. Confirmation of output disabling

Enabling output

Click *Message Set* drop-down and select the desired message set to enable output on the selected port.

The *Message set* list contains receiver predefined message sets, base correction predefined set and custom sets. They can be edited on the *Message Sets* tab.

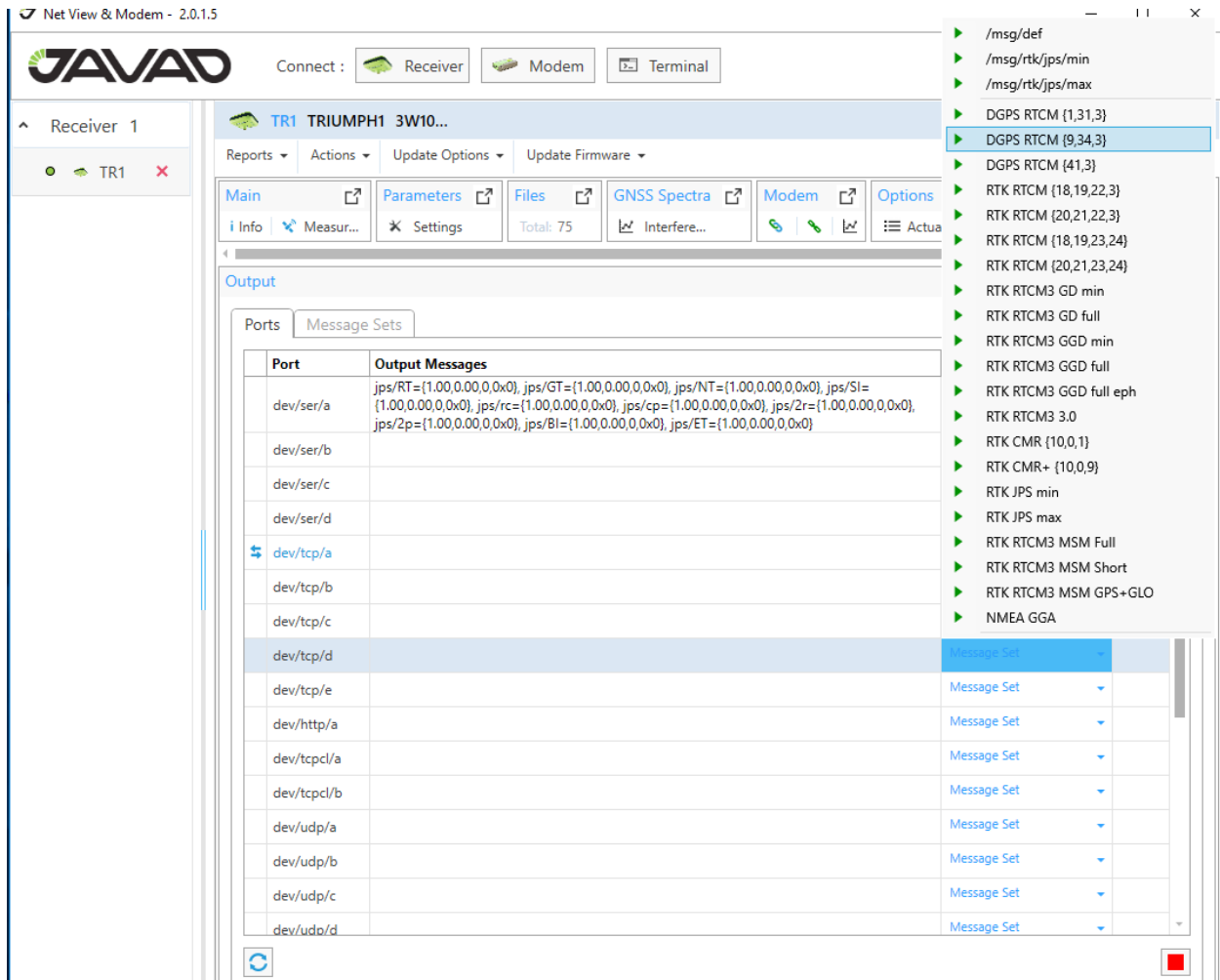


Figure 4. Enabling output

Deferred output

If the port is currently used by NetView & Modem output enabling will be deferred until disconnect. It can be canceled by clicking the *Cancel* button.

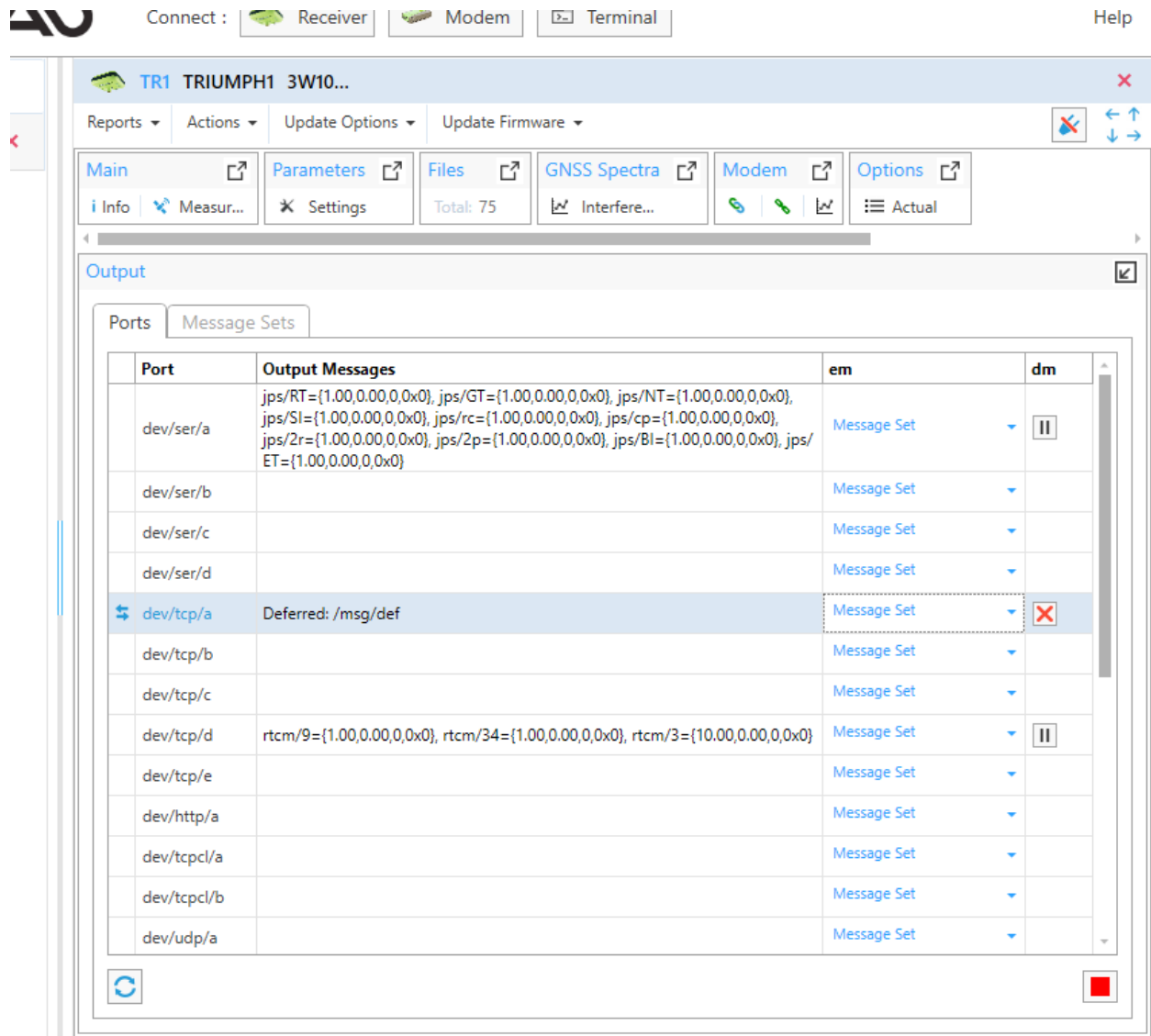


Figure 5. Deferred output on the current port

Message Sets tab

The Message Sets tab contains editable message sets.

1. Predefined message sets are

- /msg/def,
- /msg/rtk/jps/min,
- msg/rtk/jps/max,

They can be edited and stored in the receiver.

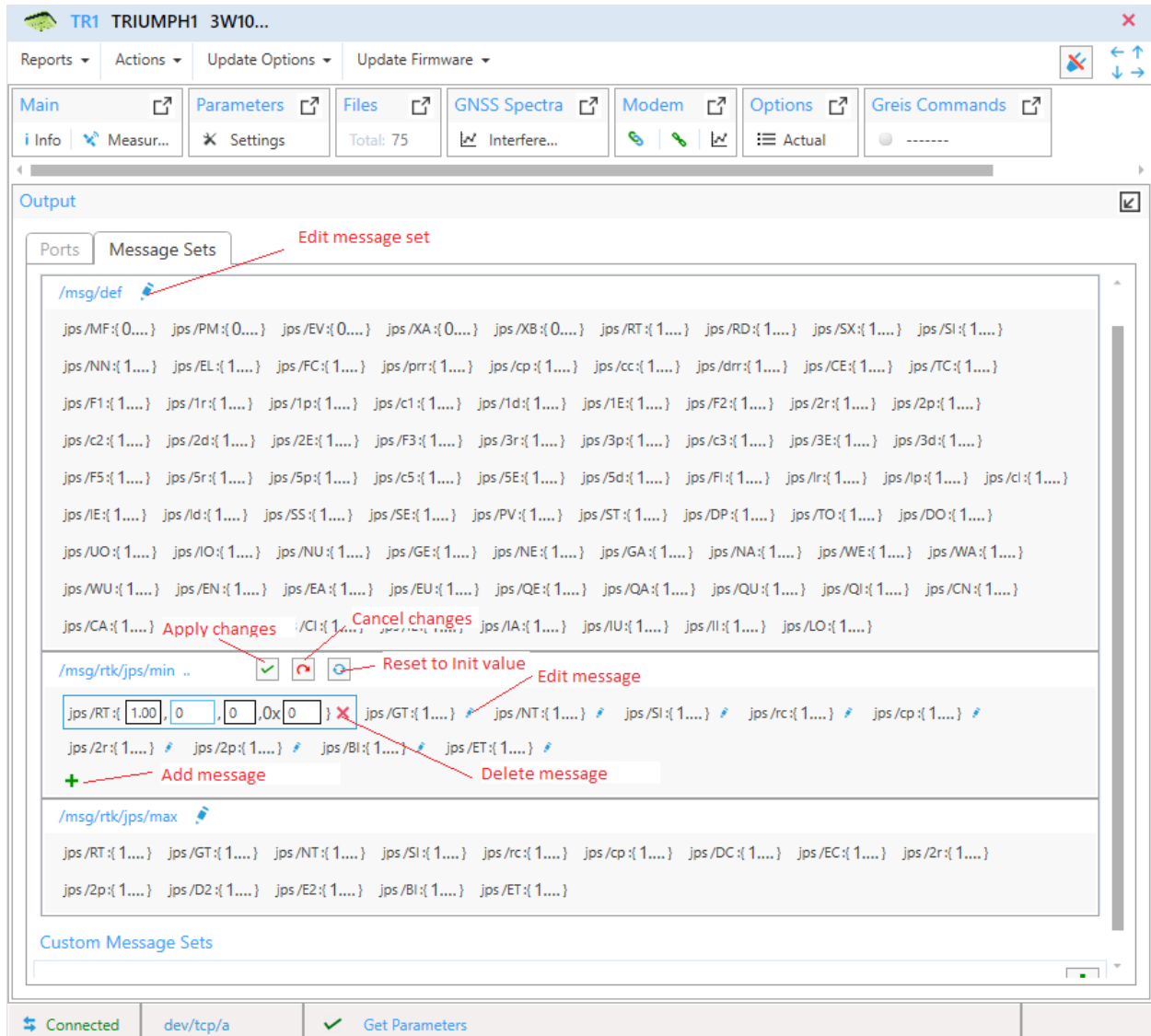


Figure 6. Predefined messages sets

Editing predefined message set

Click *Edit* (blue pen) in the header. The *Edit* button will be replaced by *Apply*, *Cancel* and *Reset* buttons.

- *Apply* – saves changes to the receiver.
- *Cancel* – receives actual message set from the receiver. All changes are lost.
- *Reset* – resets predefined message set to the initial value. All changes are lost.

Editing message

Click *Edit* near desired message. *Output Interval*, *Phase*, *Count* became available for the changing.

Delete – deletes message from message set.

The edited message will be signed by blue star.

Adding message to the message set

Click Add Button (green cross). Available messages tree will be opened. Open desired messages group and click on message. It will be added to the set. Messages that are already in the set are shown semitransparent.



Figure 7. Adding of a message

2. Custom message sets

The custom message sets can be created by the user. They are stored in the NetView & Modem and are available for the enabling in the Ports tab.

To create the new custom messages set click *Add* (Green cross).

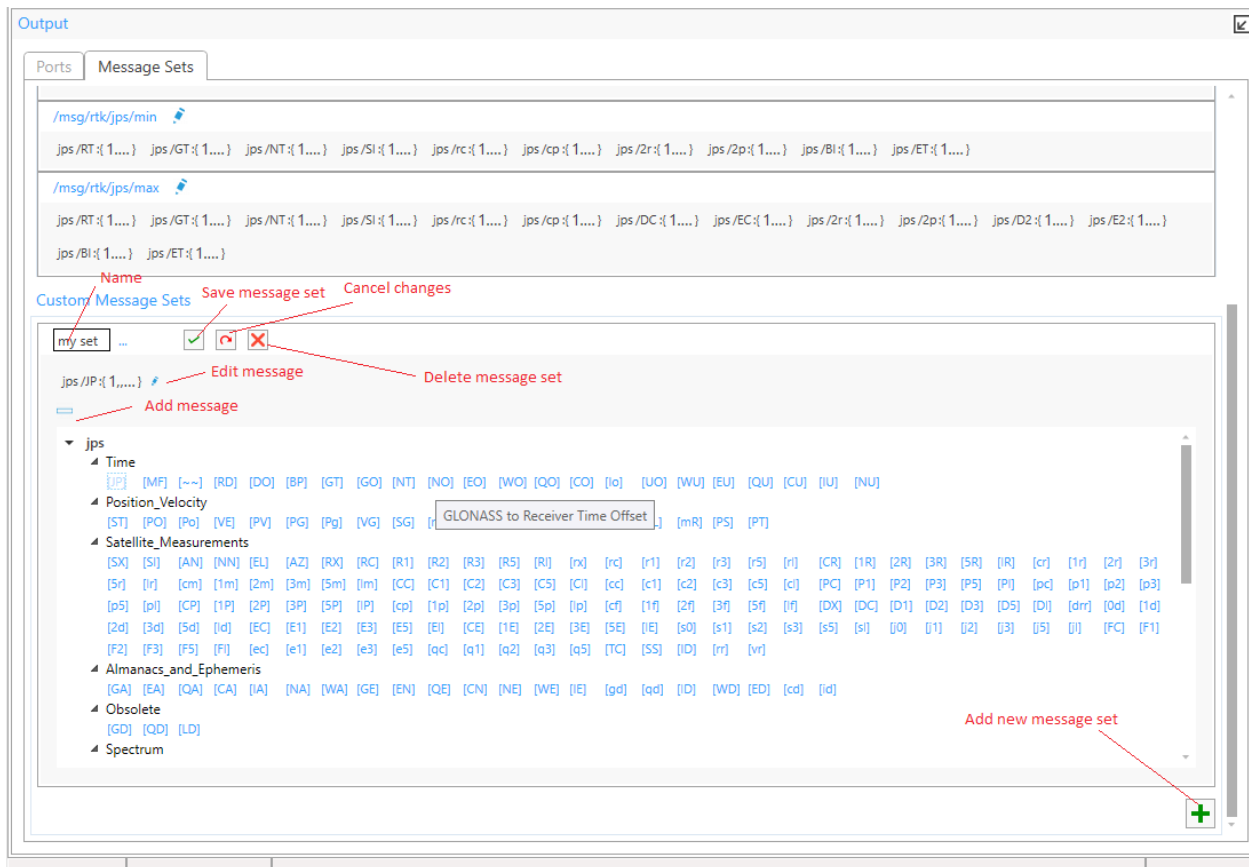


Figure 8. Custom Messages Set

Editing custom message set

Click *Edit* (blue pen) in the header. The *Edit* button will be replaced by *Save*, *Cancel* and *Delete* buttons. New message set is shown in the editing mode.

- *Save* - saves changes to the NetView & Modem.
- *Cancel* – receives last saved message set. All changes are lost.
- *Delete* – deletes custom message set
- Name box allows to change message set name.

Adding and Editing messages are carried out in the same way as for the predefined messages set.



900 Rock Avenue, San Jose,
CA 95131, USA

Phone: +1(408)770-1770
Fax : +1(408)770-1799

www.javad.com

All rights reserved © JAVAD GNSS, Inc., 2018