



WiFi in TRIUMPH-1

Configuration Example

Version 1.0

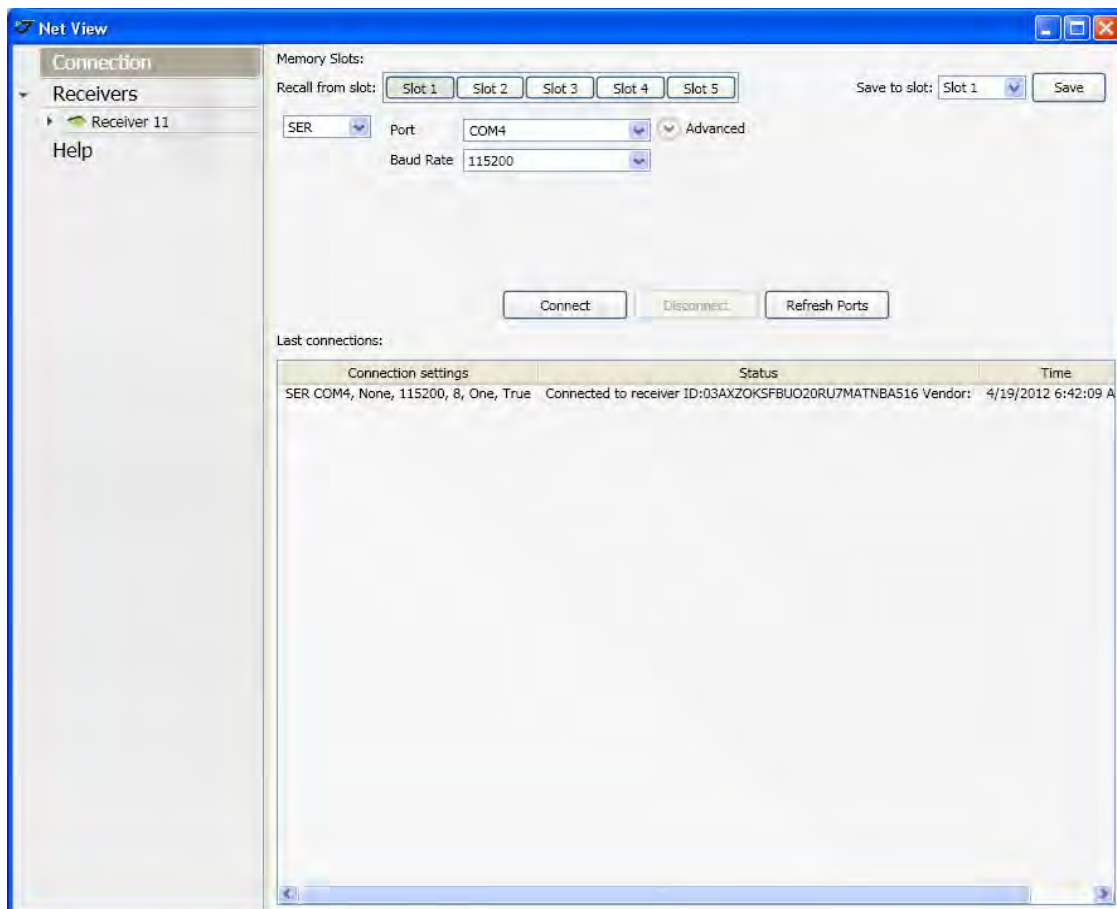
Last Revised August 2, 2012

**All contents in this manual are copyrighted by JAVAD GNSS.
All rights reserved. The information contained herein may not be used, accessed, copied,
stored, displayed, sold, modified, published, or distributed, or otherwise reproduced without express written
consent from JAVAD GNSS**

WiFi in Triumph-1 Configuration Example

Note: The receiver is working only as WiFi client; WEP is supported encryption type.

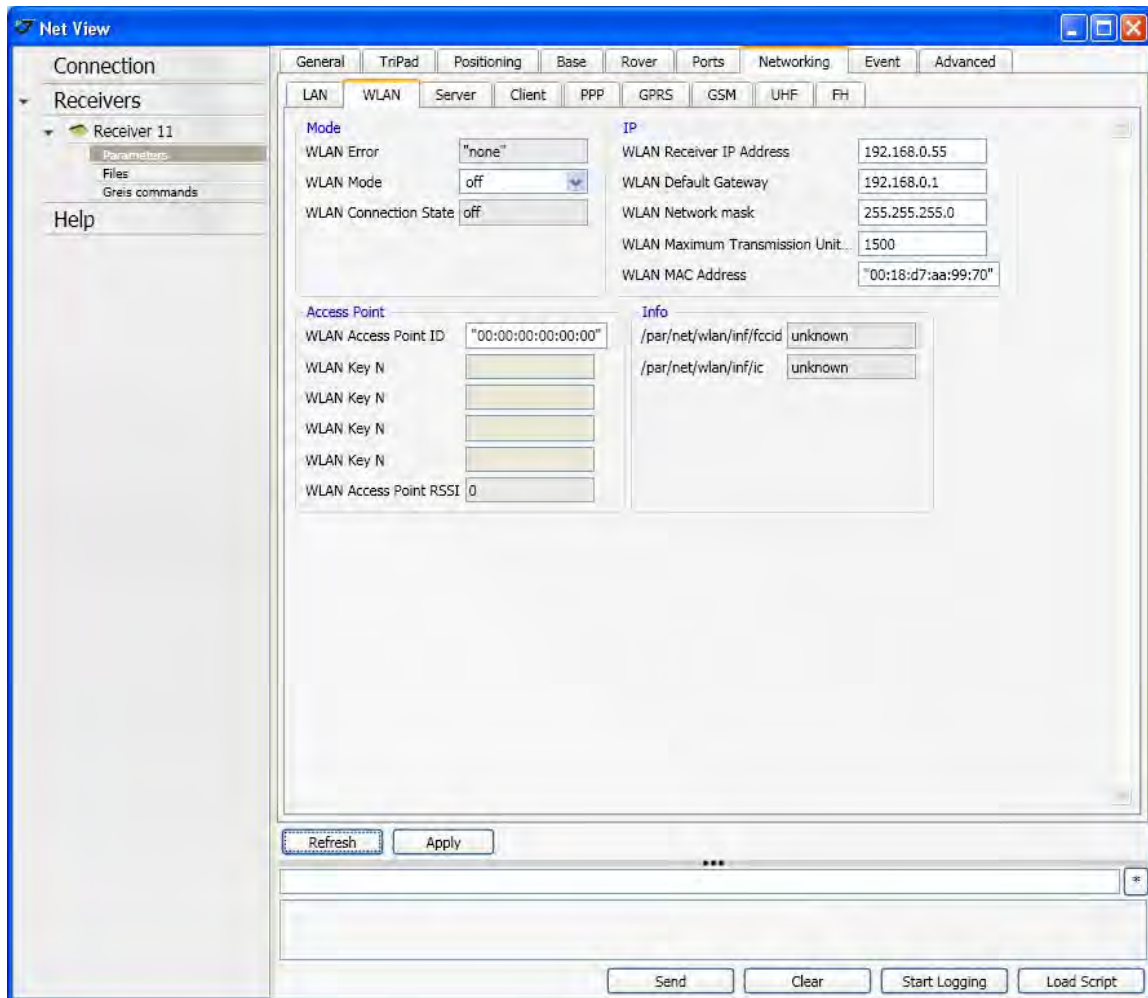
1. Start NetView.
2. Click *Connection*, select the connection using serial port, specify the COM port the receiver is connected to. Click *Connect* to connect to the receiver.



3. Select the receiver from the list of the connected receivers and click *Parameters* ▶ *Networking* ▶ *WLAN*, to setup the WiFi connection.

Set the following IP parameters: WLAN Receiver IP Address, WLAN Default Gateway (e.g, 192.168.0.1), and WLAN Network Mask (e.g, 255.255.255.0). Set the Access Point parameters: WLAN Access Point ID (enter 00:00:00:00:00:00). Click *Apply*.

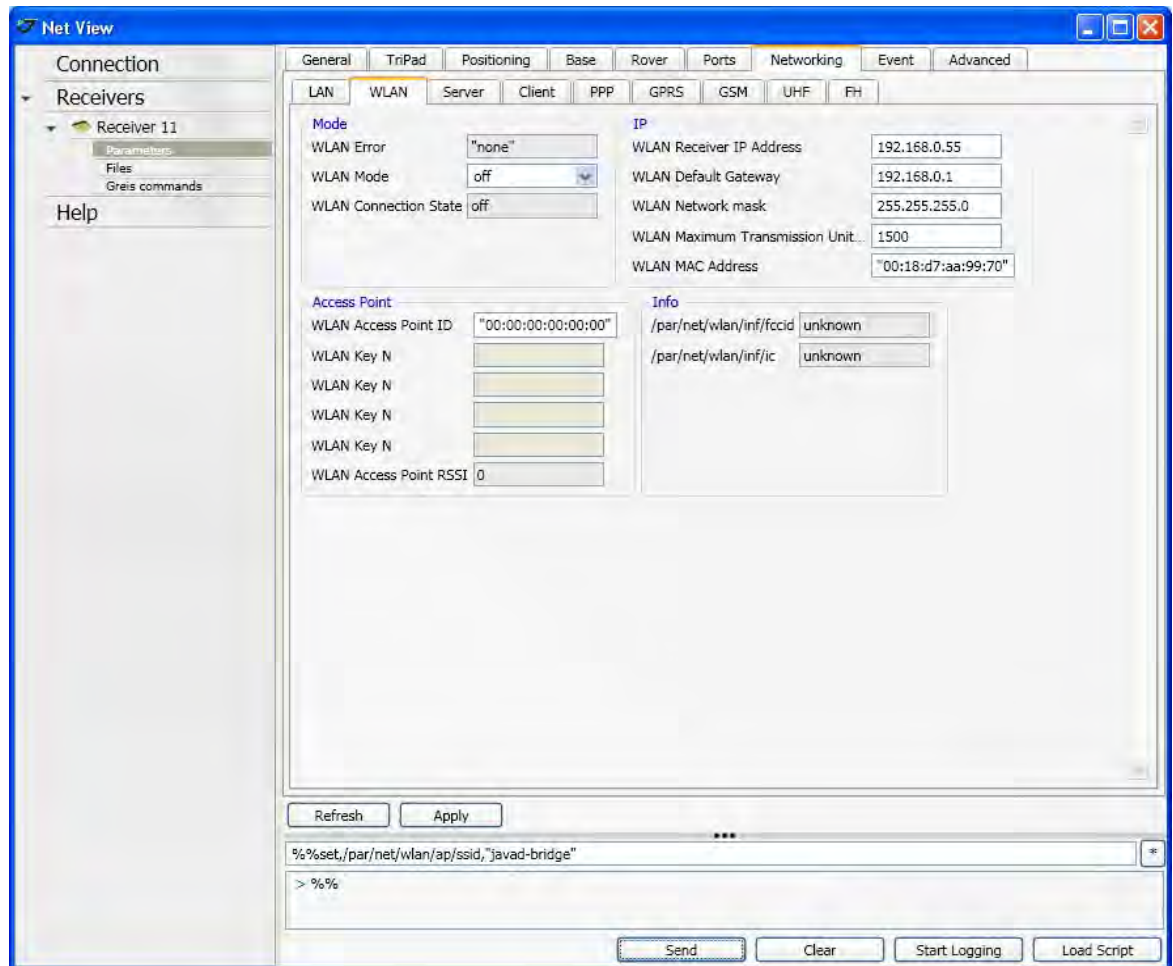
WiFi in Triumph-1 Configuration Example



4. Enter in the command line the command `%%set,/par/net/wlan/ap/ssid,"access point name"` with the WiFi access point name. Click *Apply* and wait the response `>%%`.

Example: `%%set,/par/net/wlan/ap/ssid,"javad"`.

Note: The command in the command line should be entered, not copied. Javad - it is name of the specific access point.



5. Enter in the command line the command `%set,/par/net/wlan/ap/key1,"key"` with pass key to WiFi access point. Click *Apply* and wait the response `>%%`.

Example: `%set,/par/net/wlan/ap/key1,"111111111"`

Repeat this step for all four keys. Example:

`%set,/par/net/wlan/ap/key1,"111111111"`

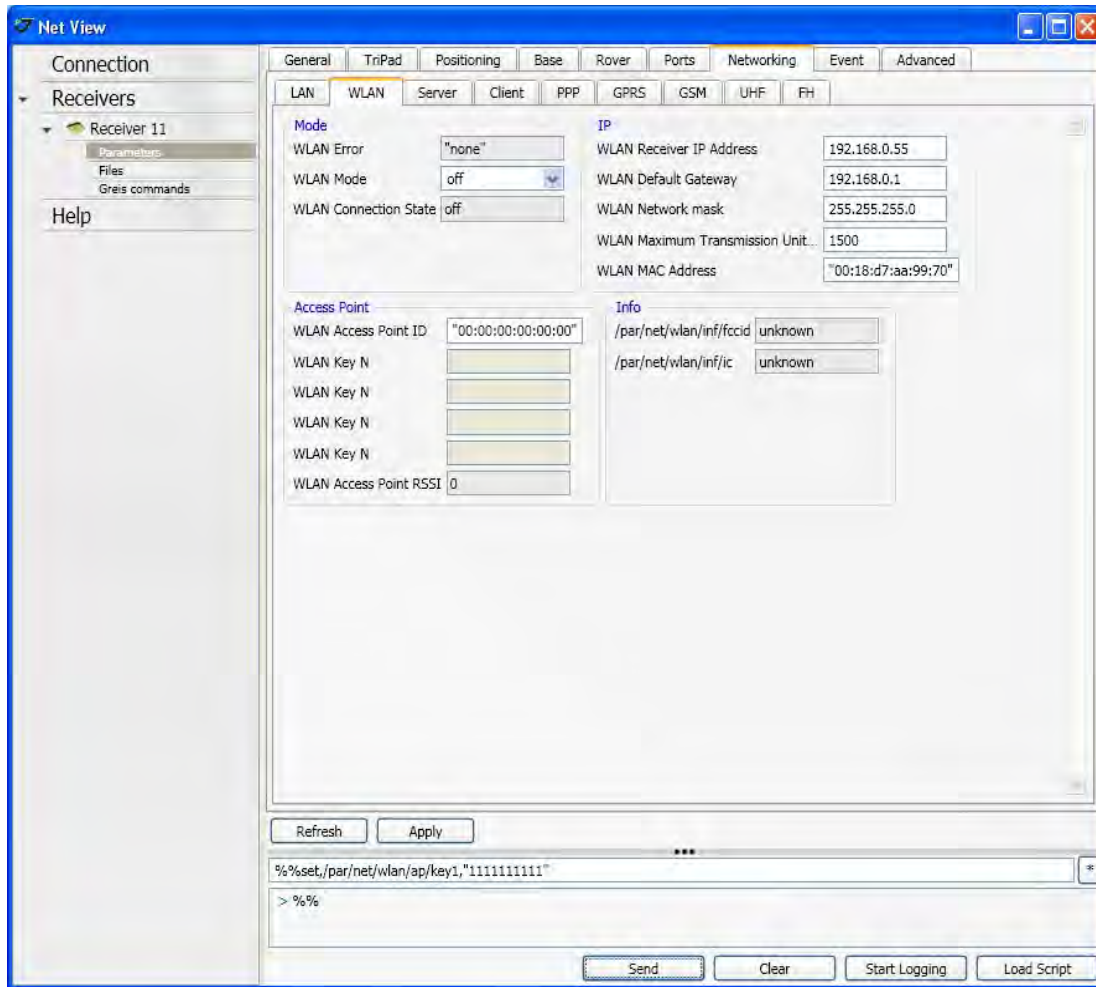
`%set,/par/net/wlan/ap/key2,"111111111"`

`%set,/par/net/wlan/ap/key3,"111111111"`

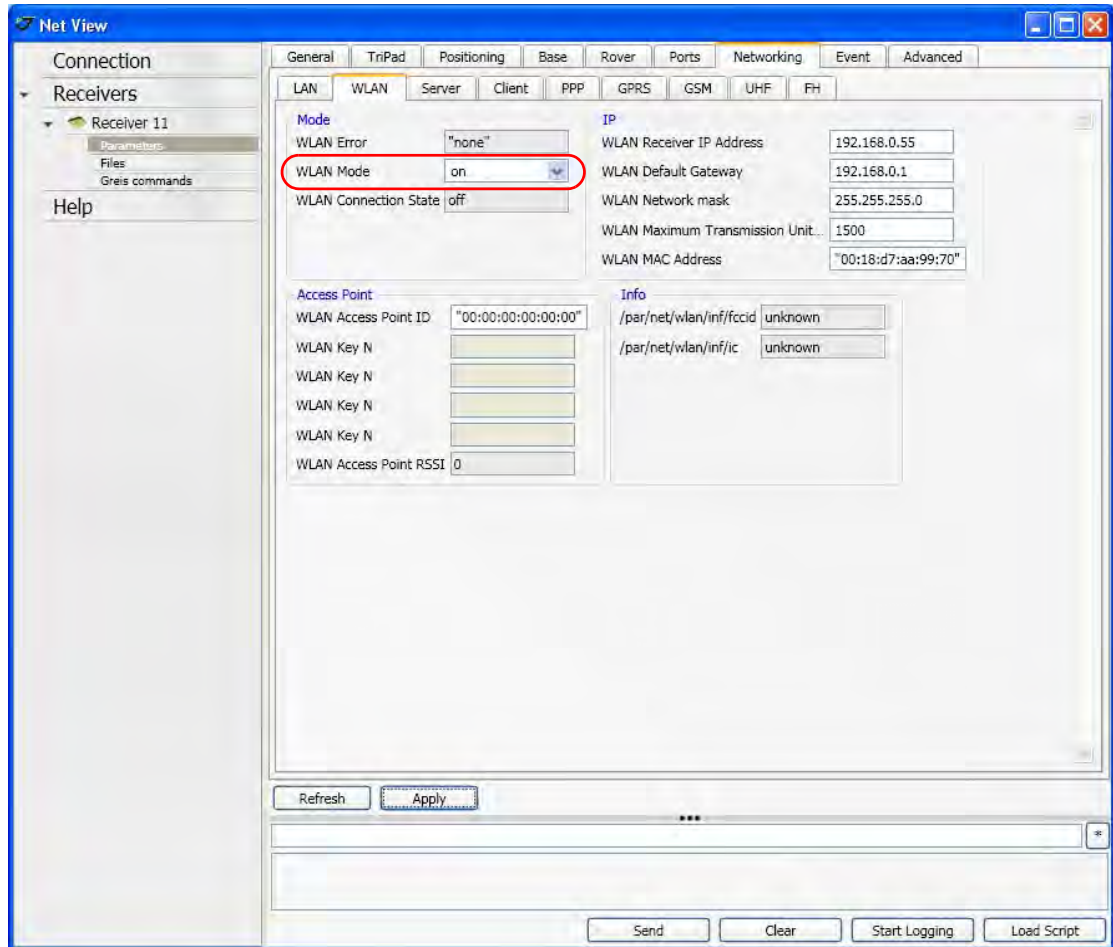
`%set,/par/net/wlan/ap/key4,"111111111"`

Note: The command in the command line should be entered, not copied.

WiFi in Triumph-1 Configuration Example



6. Set the WLAN Mode to on. Click *Apply*.



7. Reset the receiver. Click on the left panel on the receiver's name, then *Actions* ▶ *Reset*.

WiFi in Triumph-1 Configuration Example

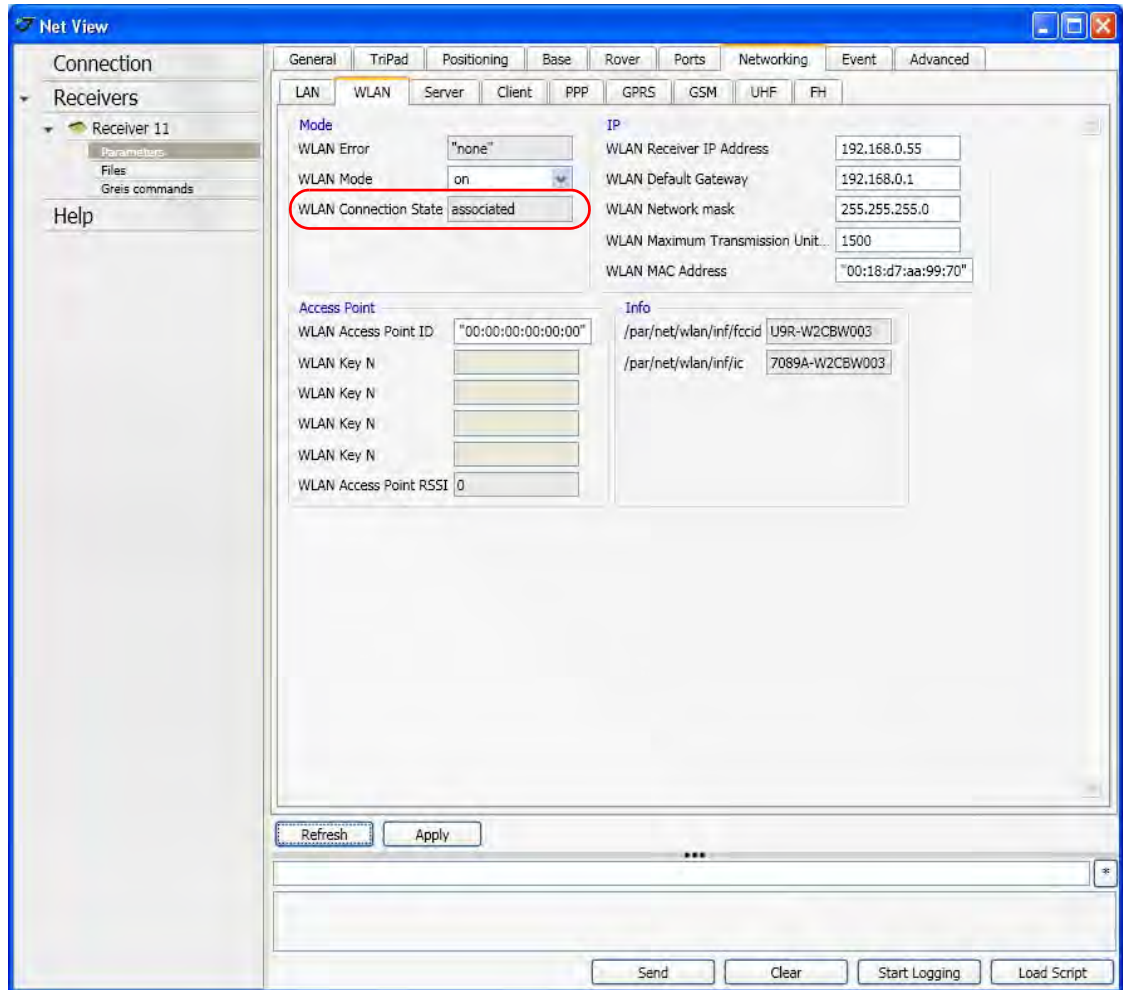
The screenshot shows the Net View software interface. The 'Actions' menu is highlighted with a red circle, containing the following options: Reset, Hit Parameters, Clear NVRAM, and Update Firmware (carefully, alfa version). The main window displays receiver details for 'Receiver 11' and a table of measurements and links.

Measurements	Sky plot	Orientation	Options	Base/Rover	Settings
Latitude	55°47'55.16917789"N				
Longitude	37°31'14.45297418"E				
Ellipsoidal height	379.649393976666				
Position SEP	1.651417				
Velocity 2D	0,01016167				
Position RMS	1,65141657				
Velocity RMS	0,02565268				
PDOP	1,2526153				
Solution	Stand Alone				
Receiver Time	07:06:22				
Receiver Date	2012.4.19				
Clock Offset	0,00044965				
Osc. Offset	0,4496473				

Sys	Num	El	Az	CA/L1	P/L1	P/L2	L2C	-L5	Track Tim
GPS	23*	41	236	41	4	4			00:05:38
GPS	31*	47	78	47	21	21	39		00:05:38
GPS	24*			40	5	5			00:05:38
GPS	20*	76	262	41	18	18			00:05:38
GPS	25*	13	36	33			18	37	00:05:38
GPS	14*	8	62	31					00:03:11
GPS	11*	17	190	35					00:05:38
GPS	13*	10	236	36					00:04:38
GPS	17*	18	278	41			24		00:05:38
GPS	32*	72	118	45	22	22			00:05:38
GPS	4	12	320	40					00:05:38
GLO	1	40	192	45	17	17	37	47	00:05:38
GLO	17/4*	29	262	32	29				00:04:22
GLO	10/-7	31	34	38	33		21		00:00:34
GLO	1/1	63	80	40	38		29		00:05:40
GLO	11/0*	51	106	39	37		29		00:05:34
GLO	18/-3*	28	324	33	32		31		00:03:39
GLO	2/-4	52	296	41	39	33	36		00:01:37

- After the connection is established, click *Parameters* ► *Networking* ► *WLAN* and ensure receiver is connected to WiFi access point: click Refresh and see if *WLAN Connection State* is associated.

WiFi in Triumph-1 Configuration Example





900 Rock Avenue, San Jose, CA 95131 USA

Phone: +1(408)770-1770

Fax: +1(408)770-1799

www.javad.com

Copyright © JAVAD GNSS, Inc., 2012
All rights reserved. No unauthorized duplication.