



JLink LAN

Getting Started

Version 1.0

Last revised January 17, 2013

**All contents in this manual are copyrighted by JAVAD GNSS.
All rights reserved. The information contained herein may not be used, accessed, copied,
stored, displayed, sold, modified, published, or distributed, or otherwise reproduced without express written
consent from JAVAD GNSS**

GETTING STARTED WITH JLINK LAN

1. Connect JLink LAN to external power supply (10...30 V).
2. Insert SIM card to the SLOT 1 if you would use GSM connection to connect Internet.

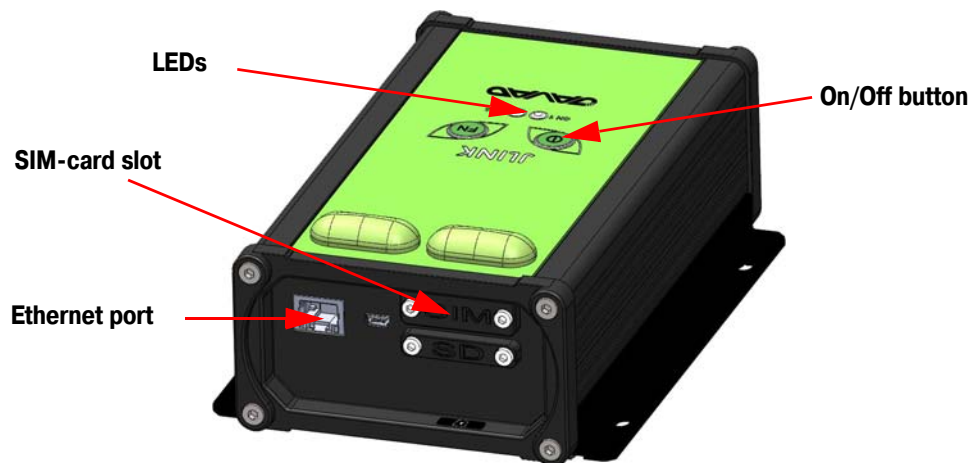


Figure 1. JLink LAN

3. Turn on JLink LAN. To turn it on press and hold more than 2 seconds the On/Off button. When the unit is turned on, both LEDs light up in orange. Thereafter the embedded software will be loaded.
4. Wait for the complete loading. When it is complete, both LEDs go out, then CH2 LED flashes green.
5. Connect to the device and configure it using web-browser. It can be performed in two ways:
 - connecting to JLink LAN via Bluetooth interface. The device (PC, handheld/pad) should be with Bluetooth interface with PAN profile support. JLink LAN Bluetooth-interface is in visibility mode, has the name "JLink LAN" and PIN code 0000. When connection is established open the web-browser and enter the address 10.1.11.1:8080.
 - connecting to the local network via Ethernet. JLink LAN static IP address is 192.168.0.200 and network mask 255.255.255.0. On the PC connected to the same LAN, open the web-browser and

Getting Started with JLink LAN

enter the address 192.168.0.200:8080.

The dialog window appears with login/password request. Enter login and password (jlink/jlink).

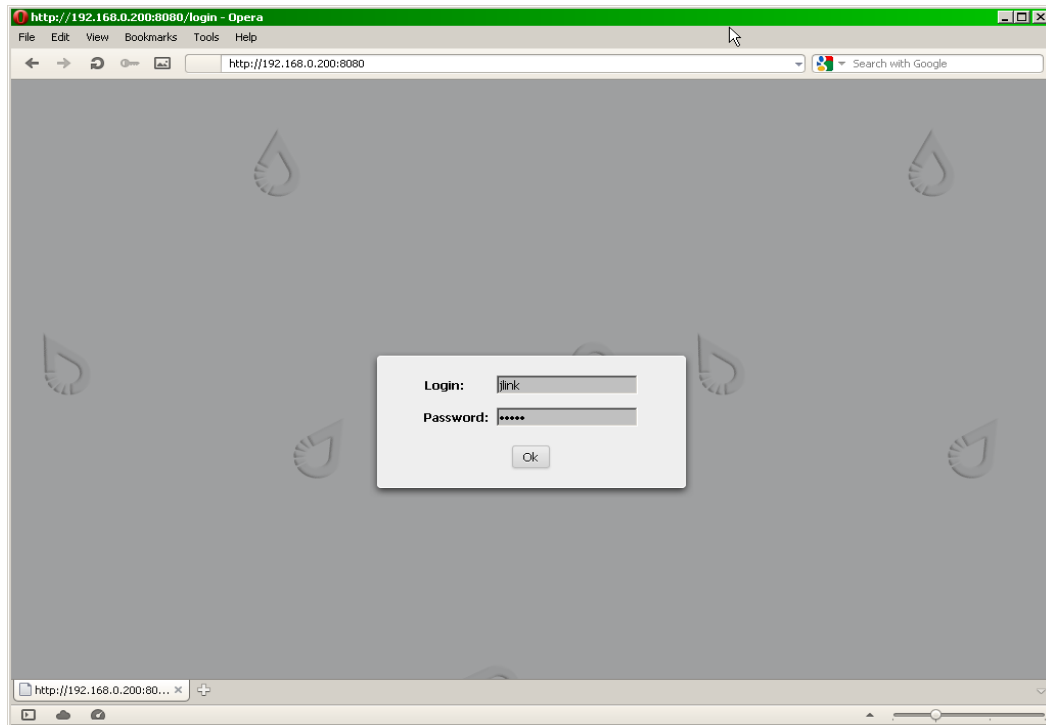


Figure 2. Login and password entering

6. Thereafter the device is ready for setup and configuration.

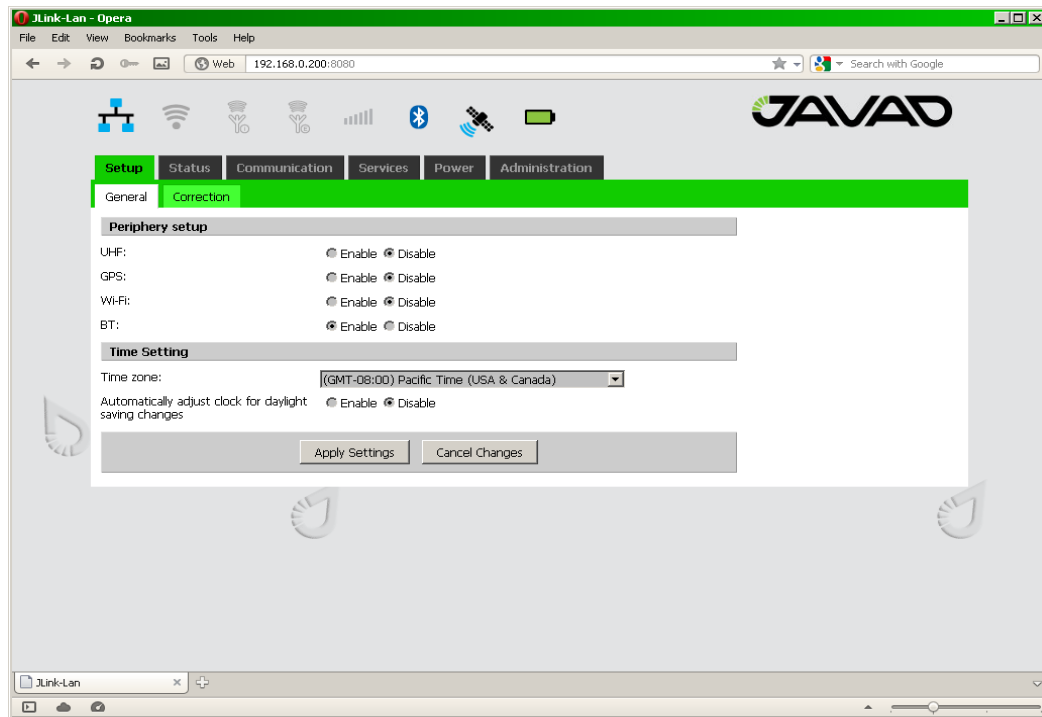


Figure 3. Configuration interface

7. Select the interface will be used to connect to Internet and configure it. The following variants are available:

- Ethernet

Configure Ethernet interface in the *Communication/LAN* tab. Set the network parameters and reboot the device using *Reboot* button in the *Administration/Management* tab.

Getting Started with JLink LAN

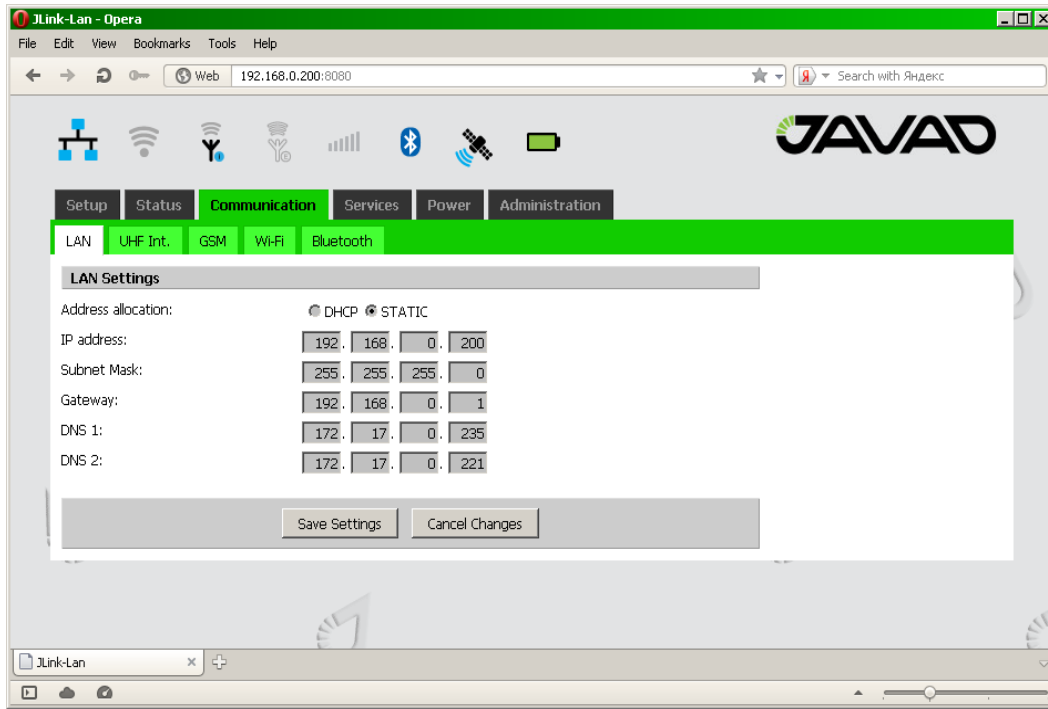


Figure 4. Communication tab

- GSM/3G/4G

Configure this interface using *Communication/GSM* tab. Set the APN parameters (not necessary) and select the SIM-card slot.

In the *Setup/General* tab activate the interface and wait for registering in the network and Internet access availability. CH1 LED flashes green.

If CH1 LED flashes red, this indicates the connection error.

More detailed connection status you can check in *Status/GSM* tab.

- WiFi

In the *Communication/WiFi* it is necessary to switch the interface to the client mode. In the

Setup/General tab turn the interface on. Select the network in the *Communication/WiFi* tab and enter password to get access and wait for the connection.

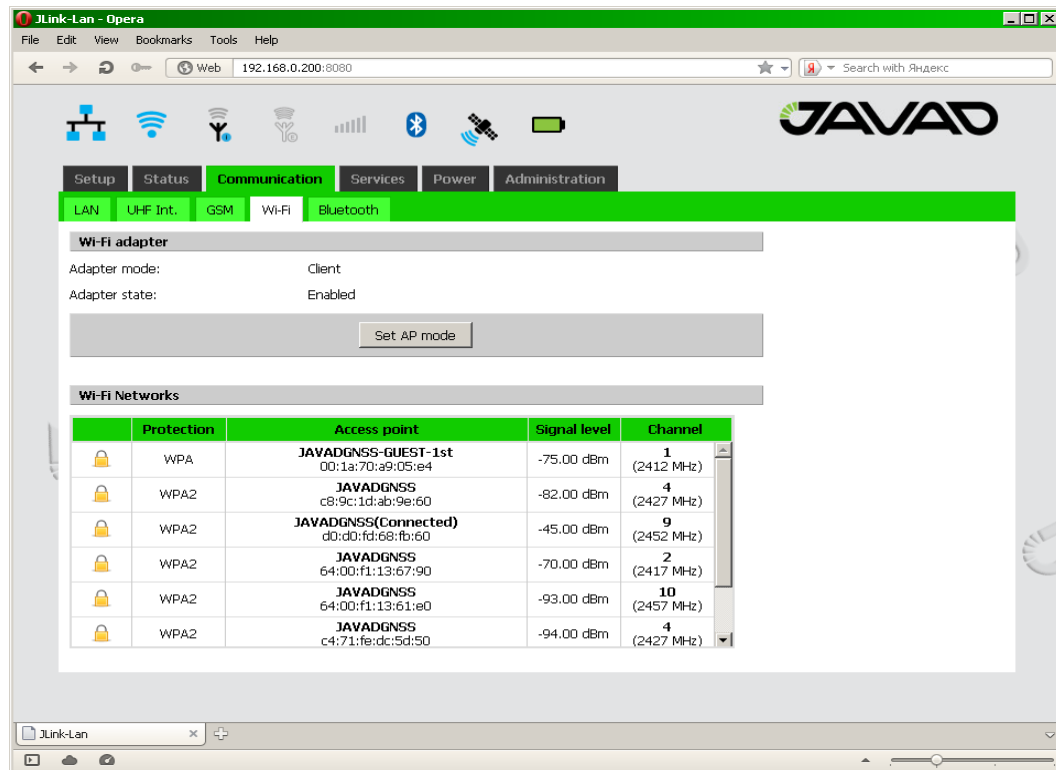


Figure 5. Communication/WiFi

More detailed connection status you can check in *Status/WiFi* tab.

8. Configure the NTRIP client. Enter the NTRIP service access parameters in the *Services/NTRIP* tab. Update the mountpoint table (*Update* button) and select the specific mountpoint.
9. Configure the internal UHF modem in the *Communication/UHF Int.* tab, specify the operation frequency and differential corrections transmitting protocol.

Getting Started with JLink LAN

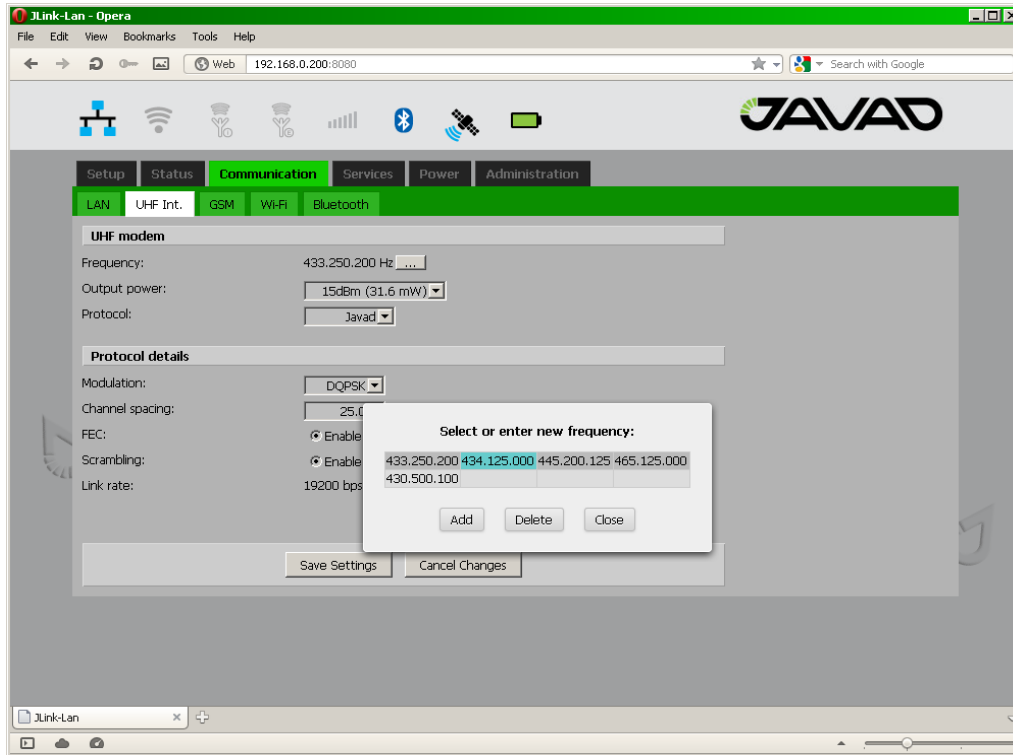


Figure 6. Communication/UHF Int.

10. Turn on the UHF modem in the *Setup/General* tab.
11. Configure the source and destination of differential corrections in the *Setup/Correction* tab.

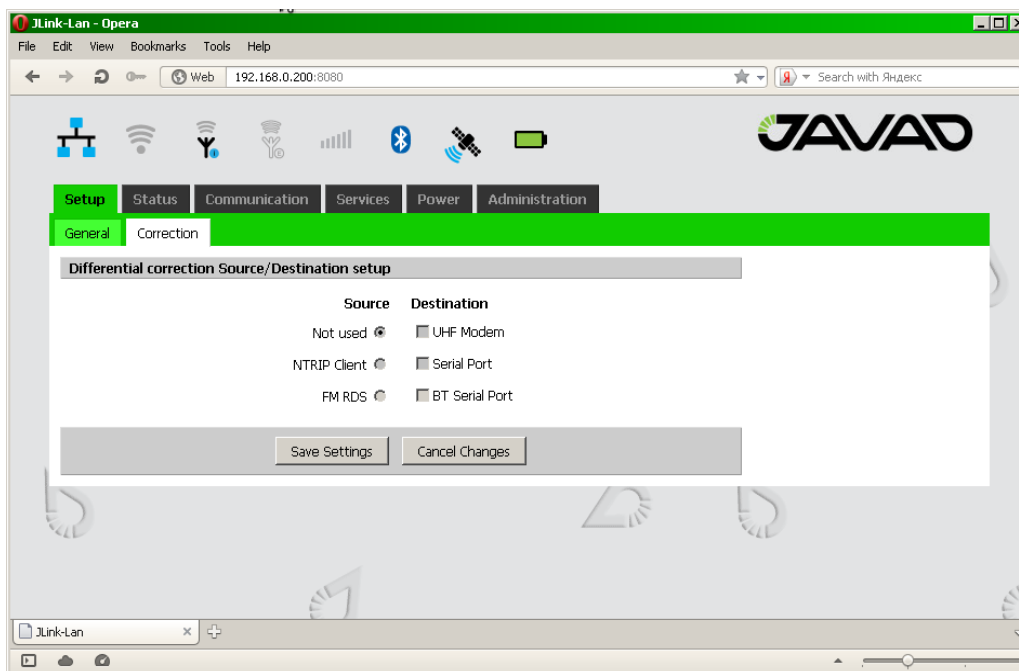


Figure 7. Setup/Correction

12. NTRIP client is a source. As a destination the UHF modem can be specified. If nothing is specified as destination, NTRIP client will receive the corrections from the server but they will be not transmitted.
13. In the *Status / NTRIP* tab check that NTRIP client is on and it is receiving data. If the modem is selected as destination, check the modem is transmitting data in the *Status / UHF Int.* tab.
14. If it is expected the powering JLink LAN from internal batteries set in the *Power / Settings* tab: *Battery mode* – Enable, *Charging* – Enable.
15. Turn off JLink LAN. To do this, press and hold the power button for two seconds. CH2 LED blinking green.

Reboot

To restore the functionality of the device, perform the reboot.

Press and hold both buttons on the front panel. When pressed the unit will let out an intermittent tone. After 20 seconds the signal will stop, reboot is complete, the buttons can be released.



900 Rock Avenue, San Jose, CA 95131 USA

Phone: +1(408)770-1770

Fax: +1(408)770-1799

www.javad.com

Copyright © JAVAD GNSS, Inc., 2012
All rights reserved. No unauthorized duplication.