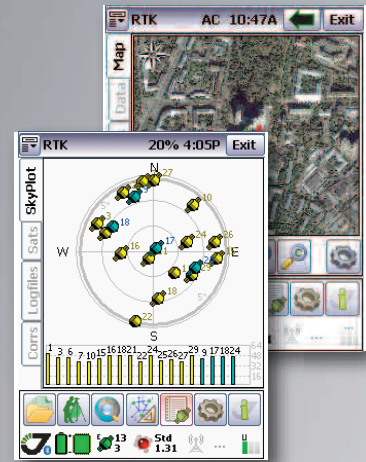


# TRACY

A comprehensive field software for Windows Mobile OS to control our receivers, automate GNSS post processing surveying tasks (Static, Fast Static, Stop&Go, Data Acquisition), and to perform RTK survey and stakeout tasks with the following features:

- Always provides information on receiver while surveying.
- Data logging to receiver and controller.
- Increased productivity and reliability with automatic occupation time control.
- Stop&Go data collection.
- Point offsets.
- In-field post-processing to estimate observation data quality.
- Data acquisition with feature codes.
- Base and rover receiver configuration and control.
- Works with corrections via radio and Internet.
- Support for survey and stakeout projects.
- National and local coordinate system and geoid support. Horizontal and vertical localizations.
- Built in COGO routines.



## Download

- Tracy Software Manuals (RTK, PPK, CDU)
- Tracy Tools Application Notes
- Tracy Tools Installation
- Giodis Installation for Tracy

<http://www.javad.com/jgnss/products/software/tracy.html>

**JAVAD**

1731 Technology Drive, San Jose, CA 95110 USA

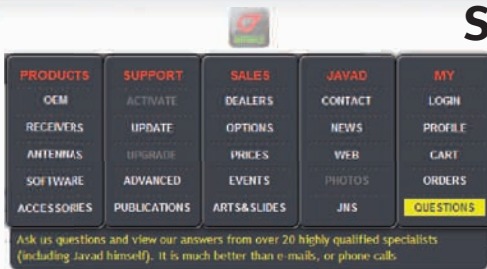
Phone: +1(408)573-8100 Fax: +1(408)573-9100

[www.javad.com](http://www.javad.com)

Copyright © JAVAD GNSS, Inc., 2009

# TRACY

## Support Inquiries



In order to address customer support inquiries in a timely and effective manner; JAVAD GNSS has created a powerful online question utility. To take advantage of this utility, please log into your JAVAD GNSS account and select **QUESTIONS** from the drop down menu.

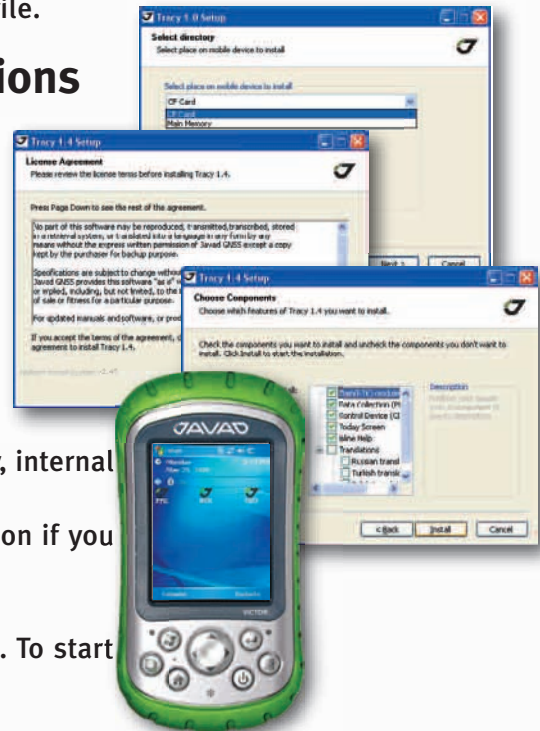
The questions utility may also be reached by following this link,

<http://www.javad.com/cgi-bin/jgnss/cgi?Action=DrawQuestionManager&initFormCurrentSavez=on>

When the JAVAD GNSS support team posts a response to your inquiry, an email containing this response is sent to the email address you have registered in your profile.

## Update Instructions

1. To perform the update, use Microsoft ActiveSync on a computer with any supporting Windows operating system and a connection between the computer and the controller.
2. If the connection has been successfully established, the PC-side of ActiveSync will turn green and you will be prompted to make partnerships with your Victor.
3. Download the executable file from the JAVAD GNSS web site. Run the executable Tracy\_pcsetup.exe on your PC (after it has been connected to your device) and wait while all the required files are being copied to the device's memory (main memory, internal Storage or CF/SD Cards).
4. Carefully read Licence Agreement, than click I Agree button if you accept licence terms or Cancel, to quit.
5. Choose components you want to install and click Install.
6. Tracy Software icon(s) appears on the controller's screen. To start Tracy, double click on the corresponding icon.



*When Tracy is starting for the first time one needs to register the product.*

*Type the unique registration code provided by your local dealer or/ with your order and click the Register button.*

## Read this First